

CPSHS – Perforated Secure Diffuser

Model: CPSHS

The Holyoake Series CPSHS range of Perforated Supply High Secure Diffusers has been designed to provide a medium to high level of security, for “At Risk” and “High Secure” areas within Prisons, Detention Centres and Holding Cells.

The CPSHS is manufactured from Stainless Steel Type 304, for easy wash down and is fitted with a single piece construction face plate. This ensures no ledges and with a long welded sleeve with neck clamping flanges, eliminates the need for face fixings. Coupled with the small 2 mm diameter holes, the Holyoake CPSHS has all the attributes “High Secure” areas demand.

Construction

The Series CPSHS comprises of a 1.2 mm thick perforated stainless steel one piece diffusion face plate, with integral seamless 25 mm flange, mounted in a long, welded, stainless steel sleeve, with neck clamping flanges and a 1.6 mm rear cross bar, spot welded to the rear of the diffuser, for added strength and security.

Installation

The CPSHS must be fixed from the rear for maximum security, using the neck clamping plates to sandwich the concrete floor, creating a “High Secure” fixing.

We recommend the concrete ceiling is recessed to conceal the flange edge, see below.

Features

- Highly secure Heavy Duty construction.
- Neck clamping flanges for secure diffuser fixing.
- 1.2 mm thick perforated stainless steel diffusion plate.
- One piece construction face plate for maximum security.
- 2 mm diameter holes for 40% free area.

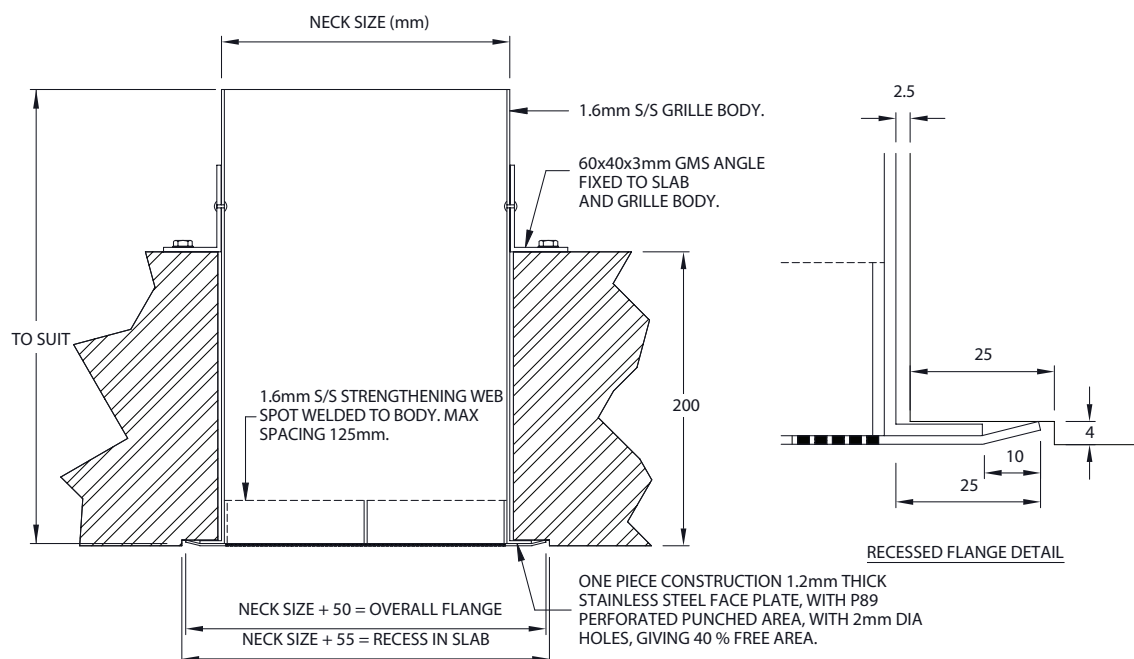
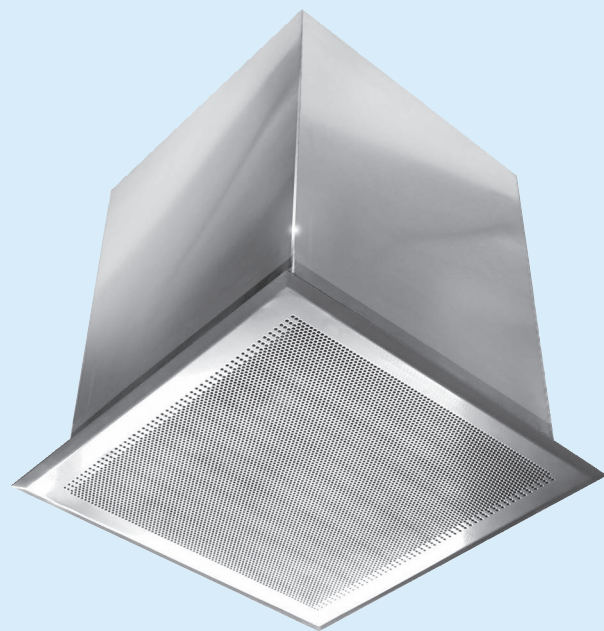
Options

The CPSHS diffusers are available in a range of sizes, however, all are individually punched. Therefore, we recommend that sizes and quantities are discussed with your local Holyoake branch, to ensure the most cost effective solution is agreed, prior to manufacture.

Finish

Standard, is 304 grade stainless steel Mill finish.

CPSHS- Ceiling Perforated Supply High Secure



Neck (mm)	Flowrate (l/s)	25	50	75	100	150	200	250	300	400	500	600	700	800	900	1000
200 x 200	Vel (m/s)	0.7	1.4	2.1	2.8	4.2										
	ΔP (Pa)	4	15	35	62	139										
225 x 225	Vel (m/s)	0.5	1.1	1.6	2.2	3.2	4.3									
	ΔP (Pa)	2	9	20	36	81	143									
250 x 250	Vel (m/s)	0.4	0.9	1.3	1.7	2.6	3.5	4.3								
	ΔP (Pa)	1	6	13	22	50	89	139								
300 x 300	Vel (m/s)	0.3	0.6	0.9	1.2	1.8	2.4	3	3.6	4.8						
	ΔP (Pa)	1	2	6	10	22	39	62	89	158						
350 x 350	Vel (m/s)	0.2	0.4	0.6	0.9	1.3	1.7	2.2	2.6	3.5	4.3					
	ΔP (Pa)	0	1	3	5	11	20	31	45	80	126					
400 x 400	Vel (m/s)	0.2	0.3	0.5	0.7	1	1.3	1.6	2	2.6	3.3	3.9				
	ΔP (Pa)	0	1	2	3	6	11	18	25	45	70	102				
450 x 450	Vel (m/s)	0.1	0.3	0.4	0.5	0.8	1	1.3	1.5	2.1	2.6	3.1	3.6	4.1		
	ΔP (Pa)	0	0	1	2	4	7	11	15	27	43	61	83	109		
500 x 500	Vel (m/s)	0.1	0.2	0.3	0.4	0.6	0.8	1	1.2	1.7	2.1	2.5	2.9	3.3	3.7	4.2
	ΔP (Pa)	0	0	1	1	2	4	7	10	17	27	39	53	70	88	109

Guide Product Weights

Description	Size	Approximate Weight in Kg.
CPSHS INC SECURE BOX	250 x 250	4.84

Performance Notes

1. Vel (m/s) is the duct velocity.
2. Minimum size 200 x 200 neck.
3. Seismic restraints may be required, but not supplied.

CPR, CPS, CPMS, CPSHS, CPSS, CPT & CPTR

Product Ordering Key and Suggested Specifications

CPS CPR	—	600 x 600	—	300 x 300/300 DIA	—	OPTIONS	—	ACCESSORIES	—	FINISH
Ceiling Perforated Supply. Ceiling Perforated Return.		Plenum Adaptor Size (Ceiling Opening).		Nominal Neck Size/ Nominal Neck Diameter.		OBD-2 Opposed Blade Damper / Heavy Gauge Galvanised Perforated Plate.		SRA 300 x 300/ 250 DIA. Square to Round Adaptor.		Holyoake White. Powder Coat.
<p>Ceiling Perforated diffusers shall be Holyoake Series CPS, or CPR and shall consist of an extruded aluminium frame with close mitred corners and 0.75 mm aluminium perforated face in an extruded aluminium sub-frame. The face shall be removable, by means of a separate mounting frame, which if used for supply air shall be furnished with field adjustable pattern control louvers and a galvanised steel plenum with duct connection. All shall be as manufactured by Holyoake.</p>										

CPMS	—	200 x 200	—	FINISH
Ceiling Perforated Maximum Security.		Neck Size.		304 Stainless Steel Mill
<p>Ceiling Perforated Maximum Security Grilles (CPMS) shall be constructed of Stainless Steel type 304 for easy wash down. The faceplate shall be constructed from a single piece with 2mm holes, with no ledges or face fixings. They shall be tested to ASTM F254 and meet a minimum grade 2 rating. All shall be as manufactured by Holyoake.</p>				

CPSHS	—	200 x 200	—	FINISH
Ceiling Perforated Supply High Secure.		Neck Size.		304 Grade Stainless Steel Mill Finish.
<p>Ceiling Perforated Supply High Secure diffusers shall be Holyoake Series CPSHS. These shall be constructed from a single piece of Stainless Steel 304 Grade face plate, with small 2mm diameter holes, with no ledges, or face fixings. Complete with a long welded neck sleeve for full floor penetration and neck clamping flanges, ensuring no face fixings are required. All shall be as manufactured by Holyoake.</p>				

CPSS	—	600 x 600	—	2 3	—	ACCESSORIES	—	FINISH
Ceiling Perforated Supply Secure.		Nominal Neck Size.		Perforated Hole Size and Plate Thickness.		SSA, SRA & RRA Neck Adaptors, Premi-Aire™, or Galvanised Cushion Head Boxes.		Holyoake White. Powder Coat.
<p>Ceiling Perforated Supply Secure diffusers shall be Holyoake Series CPSS and shall be constructed from heavy section aluminium surround to provide maximum security. 2 or 3 mm thick steel plate shall provide 30, or 40 % free area. Finished in a durable Powder Coat. All shall be as manufactured by Holyoake.</p>								

Note Seismic restraints are required, but not supplied.