



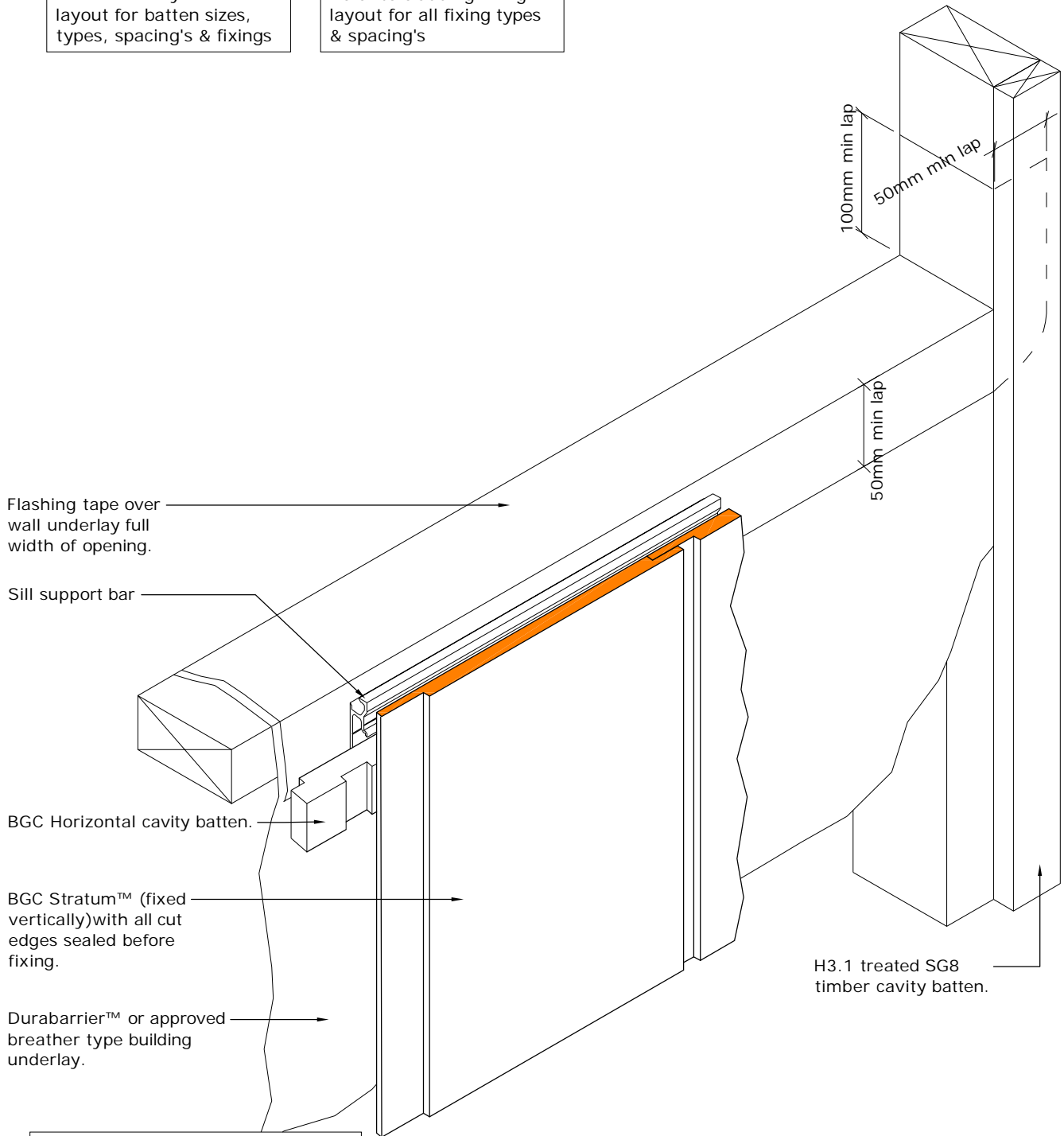
# Fibre Cement

**Cavity Batten Note:**

Refer to cavity batten layout for batten sizes, types, spacing's & fixings

**Cladding fixing note:**

Refer to cladding fixing layout for all fixing types & spacing's



Note where Durabarrier™ is used flashing tape must be applied to the entire opening

PROFILE **BGC Stratum™ and Stratum™ Duo (Vertical Installation)**

DETAIL **Window Sill/Jamb Junction Detail Cavity Construction**

DATE **May 2019**

SCALE **1:5 @ A4**

DETAIL NO. **SV-13**