

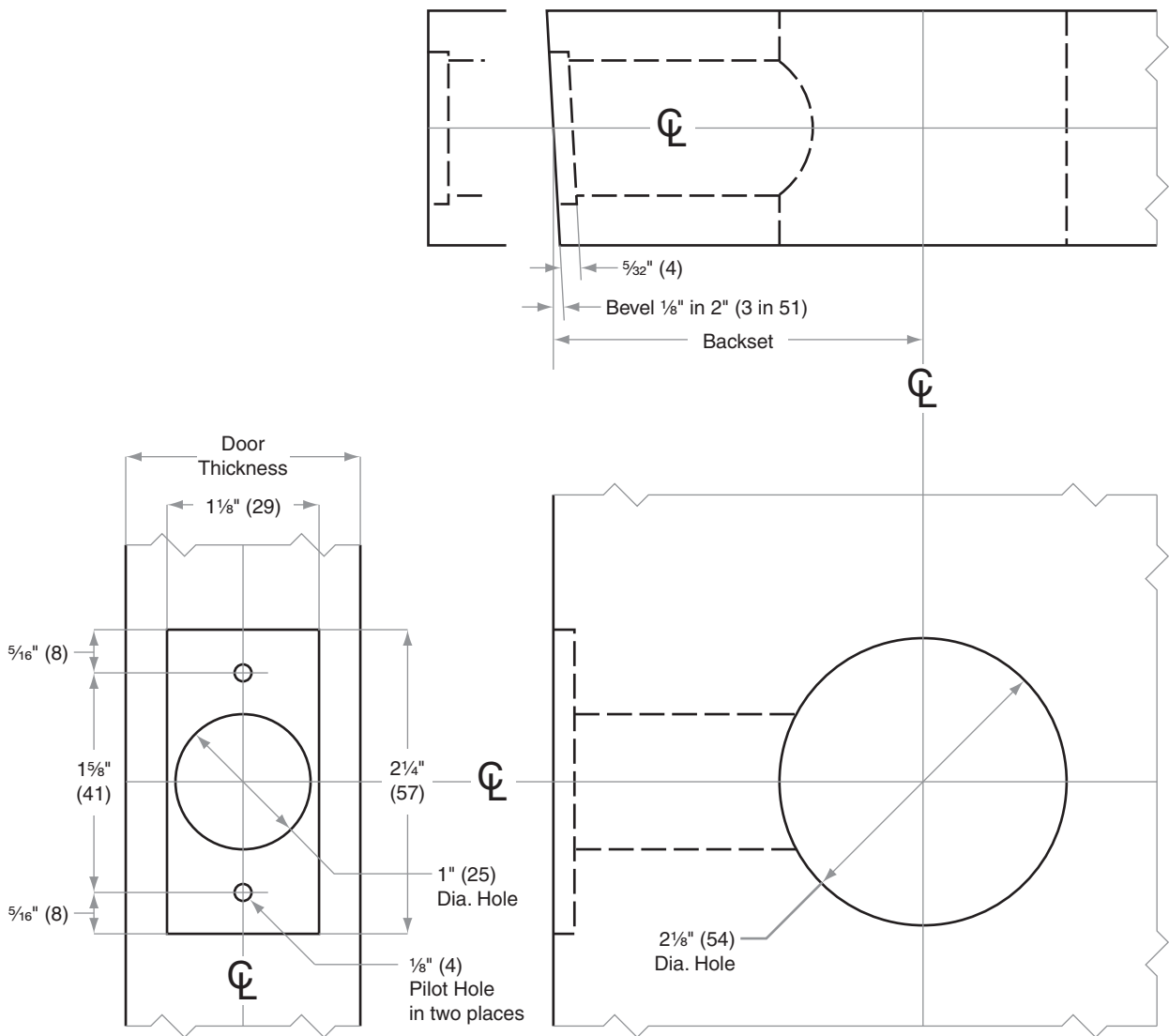


D-Series Knobs

Models D10–D85, D12EL/EU, D80PDEL/EU

- Door Type:** Wood or Composite, Flat or Beveled
Door Thickness: 1 $\frac{1}{8}$ " (35 mm)–2" (51 mm)
Faceplate: Square Corner, 1 $\frac{1}{8}$ " (29 mm) wide
Backsets: 2 $\frac{3}{8}$ " (60 mm), **2 $\frac{3}{4}$ " (70 mm)**, 3 $\frac{3}{4}$ " (95 mm), 5" (127 mm), other

For EL/EU functions, provision must be made to route low voltage wire to lock. **A clearance hole is required to accommodate the rectifier, $\frac{7}{16}$ " (11) diameter by 2 $\frac{7}{8}$ " (73) long.**



Dimensions shown in parentheses () are in millimeters.

Door preparation template