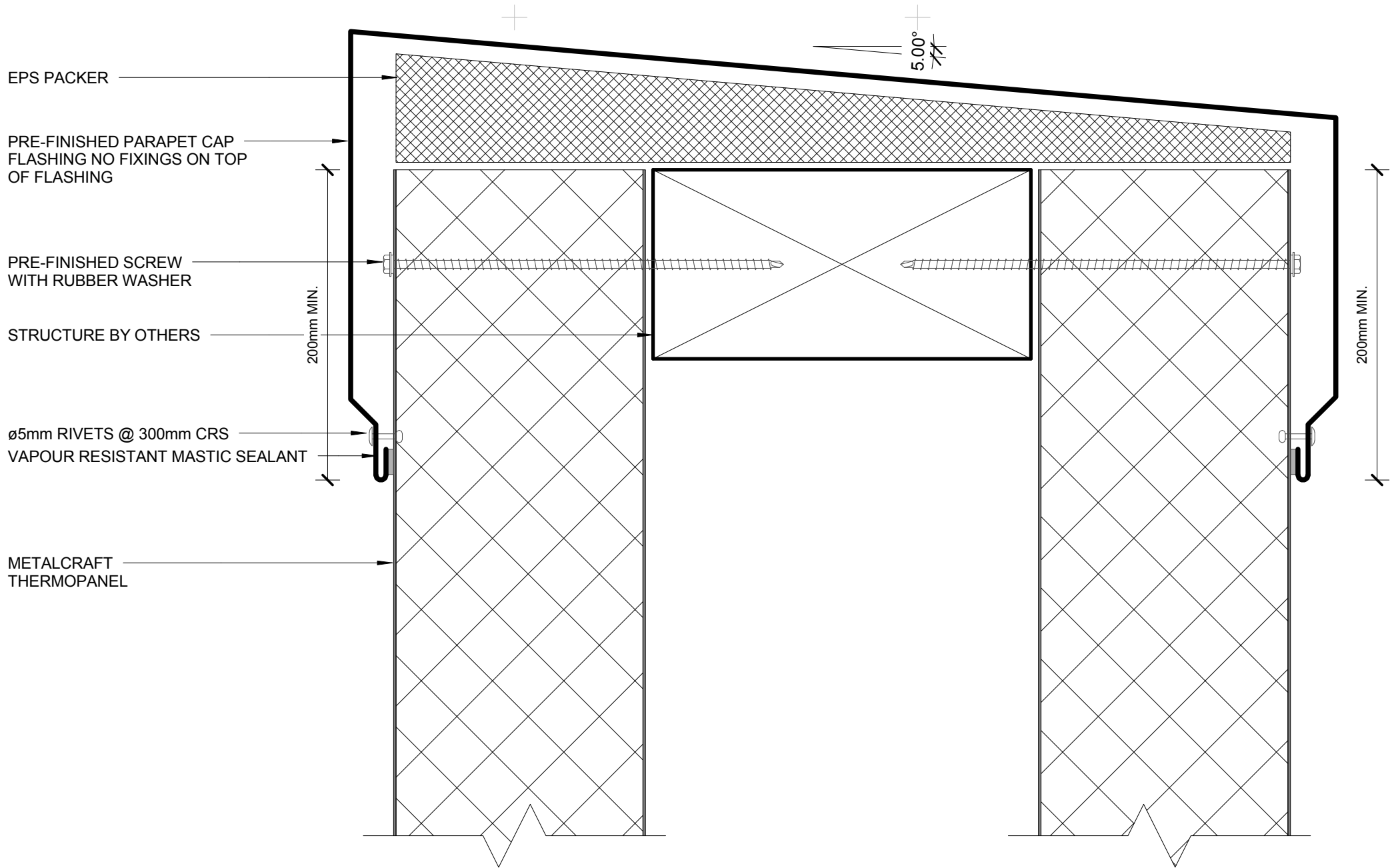


Thermopanel EPS

EXTERNAL WALL DETAILS

DETAIL LIST

00 / 21	COVER SHEET
01 / 21	PARAPET
02 / 21	WINDOW HEAD
03 / 21	WINDOW SILL AND JAMB
04 / 21	VERTICAL JOINT TYPE C
05 / 21	PIPE PENETRATION w DEKTITE FLASHING
06 / 21	PIPE PENETRATION w PVC FLANGE
07 / 21	MIDFLOOR JOINT
08 / 21	SECRET FIXING JOINT 01
09 / 21	SECRET FIXING JOINT 02
10 / 21	METERBOX JAMB HEAD AND SILL DETAIL
11 / 21	INTERNAL/EXTERNAL CORNER DETAIL
12 / 21	ALTERNATIVE INTERNAL CORNER
13 / 21	ALTERNATE EXTERNAL CORNER
14 / 21	ABUTMENT 01
15 / 21	ABUTMENT 02
16 / 21	BOTTOM OF CLADDING 01
17 / 21	BOTTOM OF CLADDING 02
18 / 21	BOTTOM OF CLADDING 03
19 / 21	BOTTOM OF CLADDING 04
20 / 21	BOTTOM OF CLADDING 05
21 / 21	PANEL PROFILE AND SIZE



METALCRAFT
THERMOPANEL

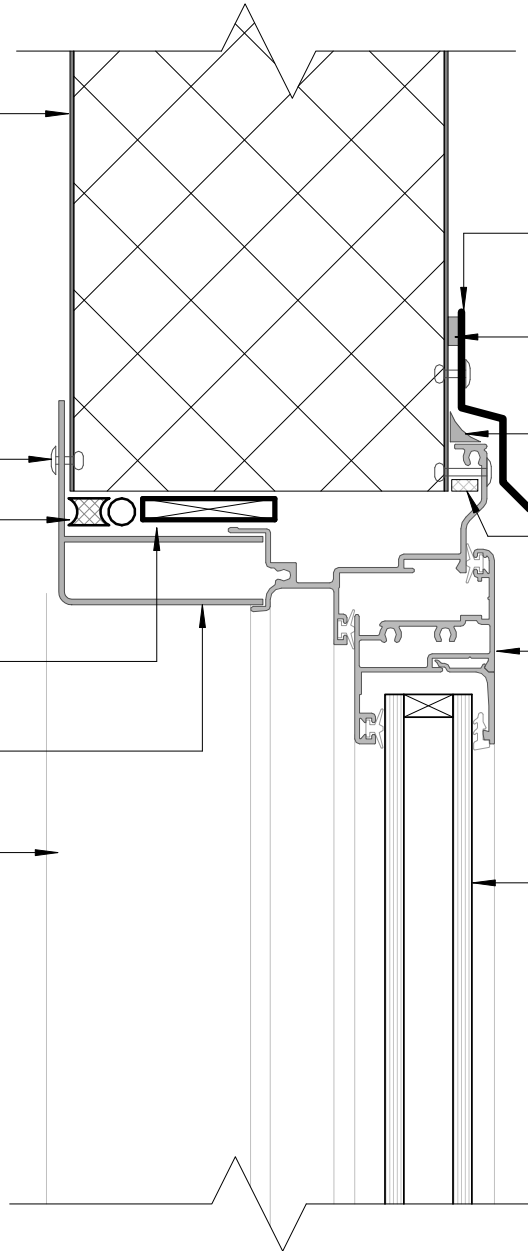
Ø5mm RIVETS @ 300mm CRS

AIRSEAL ON BACKING ROD TO RUN
CONTINUOUSLY AROUND HEAD, SILL
AND JAMB

TEMPORARY PACKER IF REQUIRED,
REMOVED AFTER FIXING

WINDOW HEAD LINER

LINE OF WINDOW JAMB
LINER BEHIND



PRE-FINISHED WINDOW HEAD
FLASHING WITH 15° FALL

SILICON SEALANT

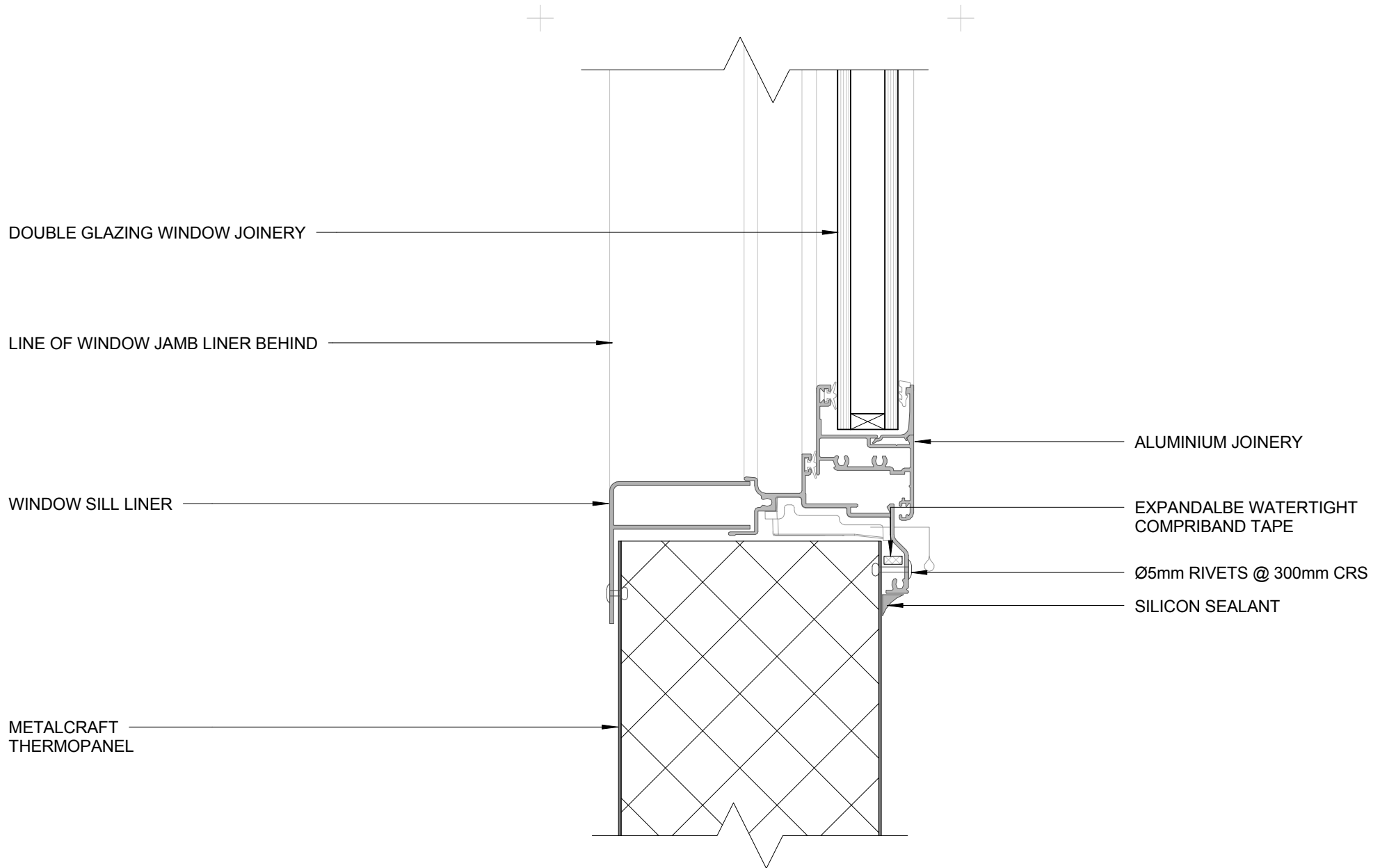
SILICON SEALANT

EXPANDALBE WATERTIGHT
COMPRIBAND TAPE

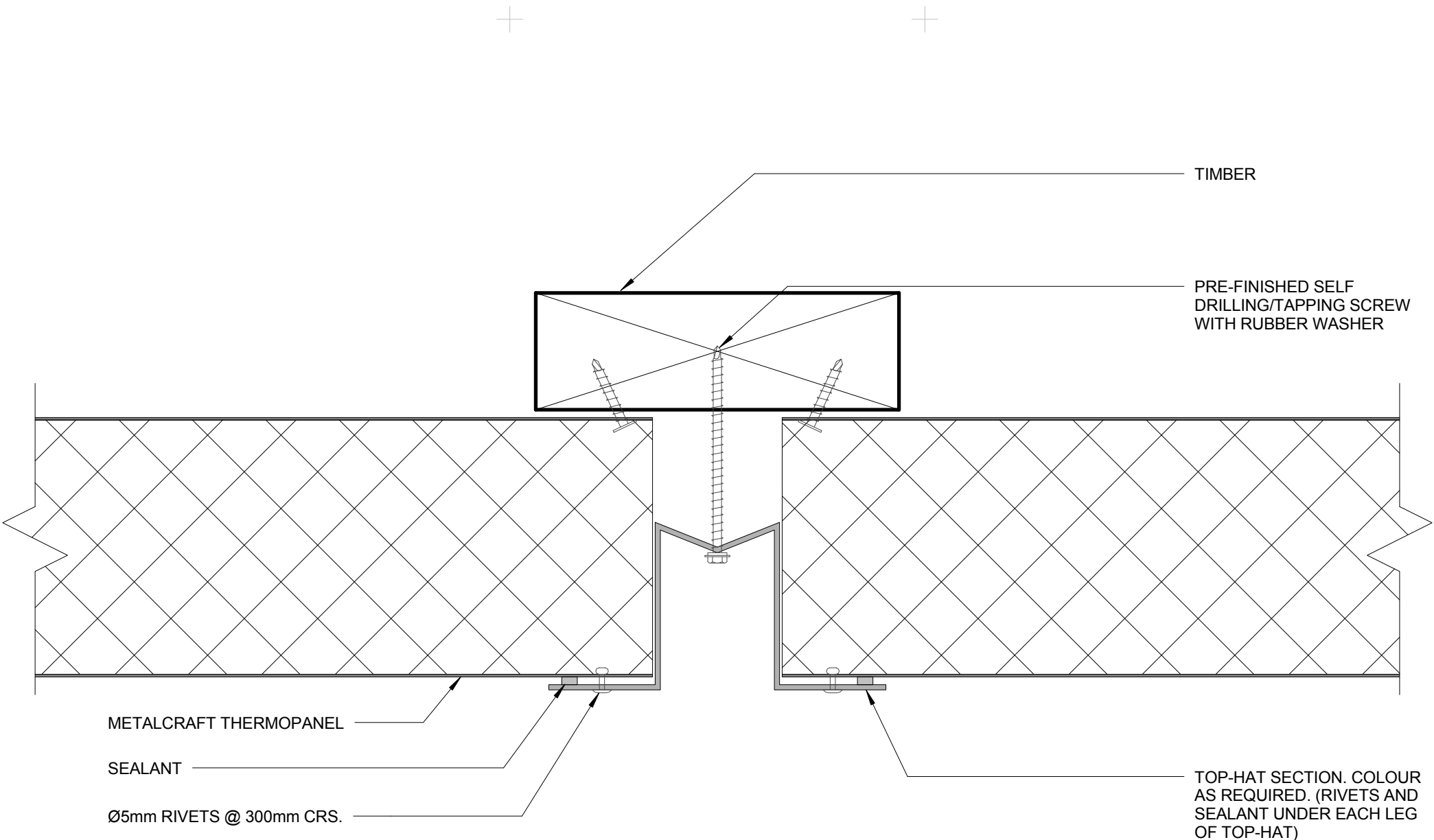
ALUMINIUM JOINERY

DOUBLE GLAZING WINDOW JOINERY

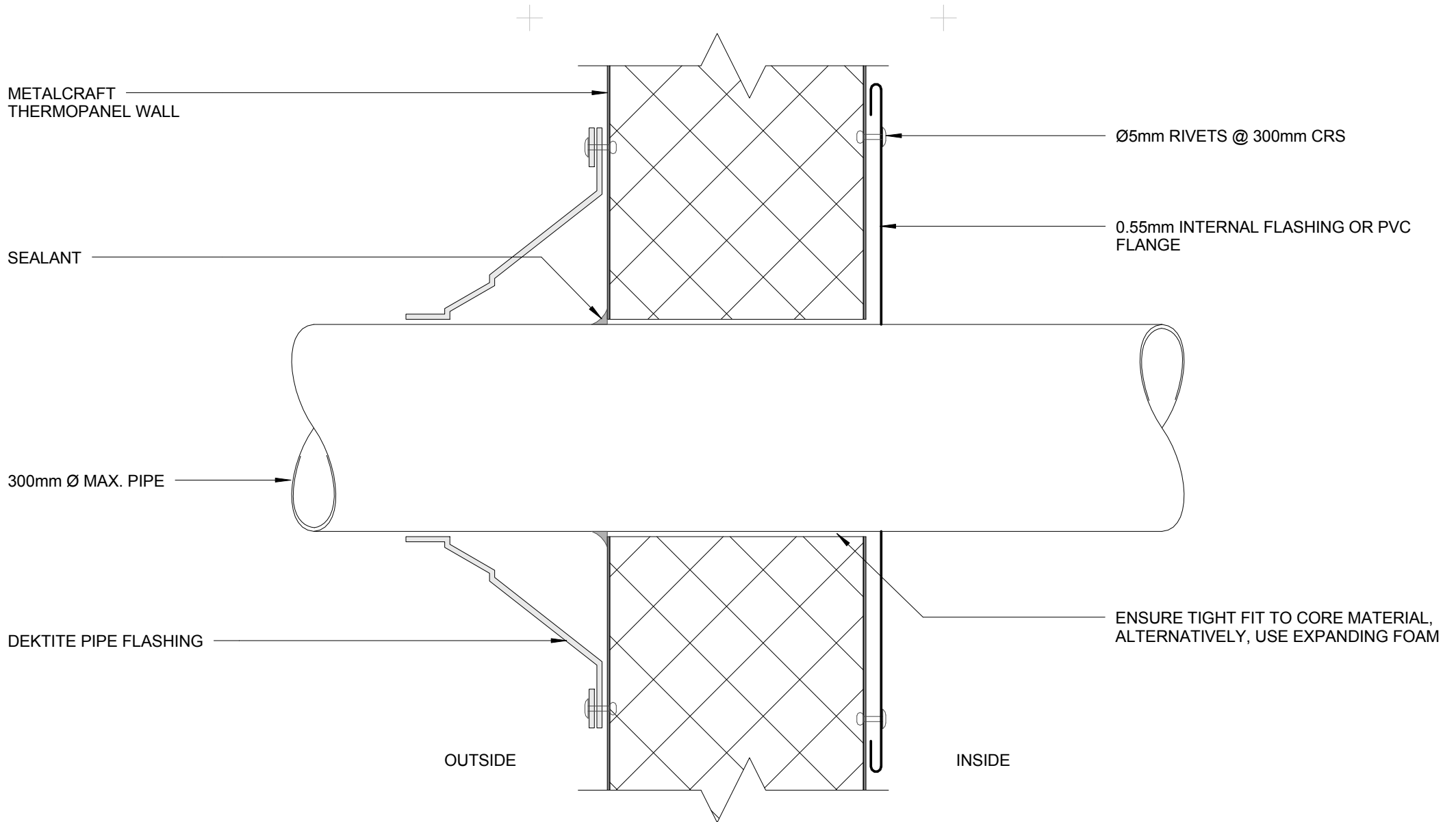
WINDOW HEAD



WINDOW SILL AND JAMB



VERTICAL JOINT TYPE C



PIPE PENETRATION w DEKTITE FLASHING

Thermopanel Wall Details

METALCRAFT
THERMOPANEL WALL

0.55mm INTERNAL FLASHING OR PVC
FLANGE

SEALANT

Ø5mm RIVETS @ 300mm CRS

0.55mm INTERNAL FLASHING OR PVC
FLANGE

300mm Ø MAX. PIPE

SEALANT

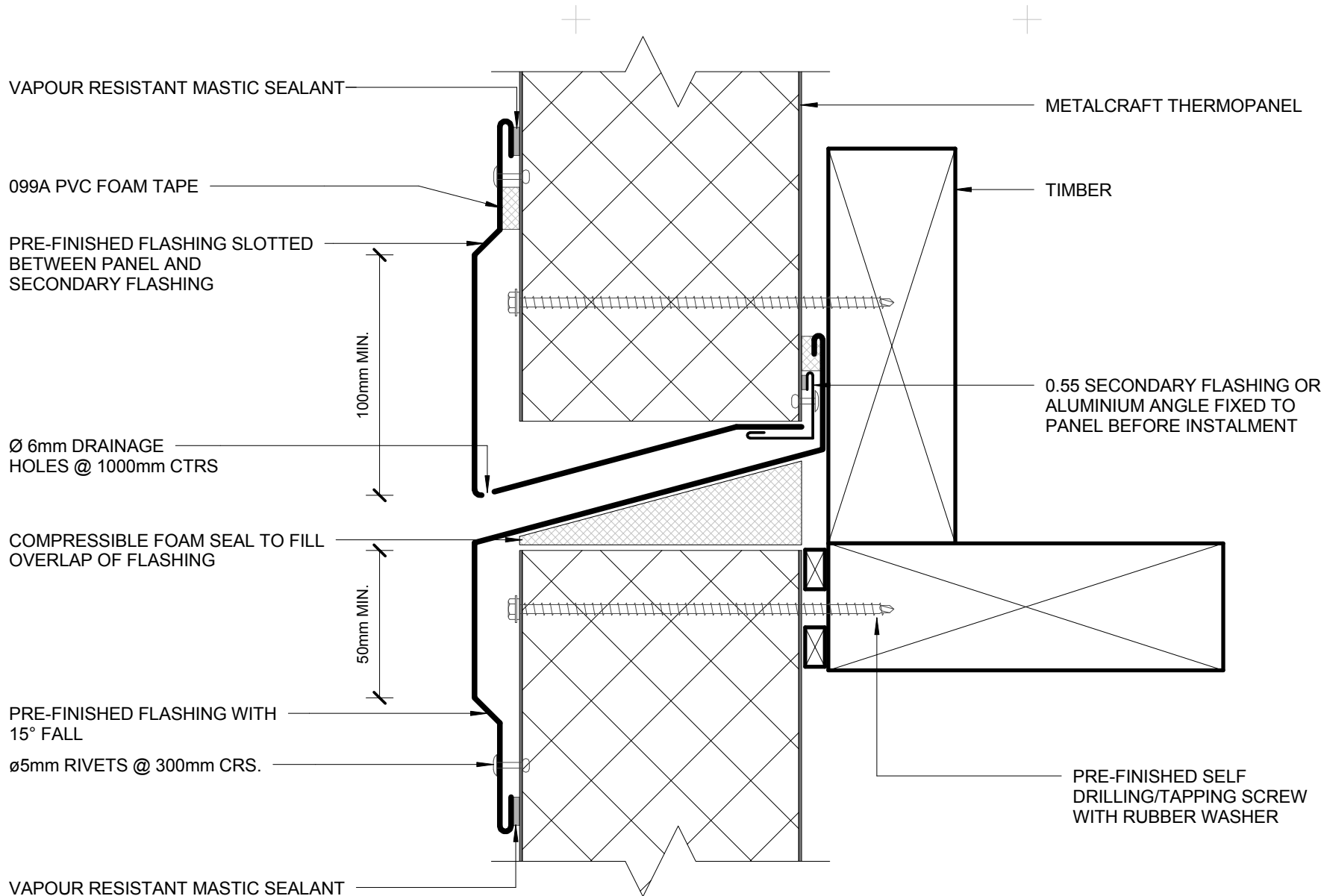
ENSURE TIGHT FIT TO CORE MATERIAL,
ALTERNATIVELY, USE EXPANDING FOAM

SEALANT

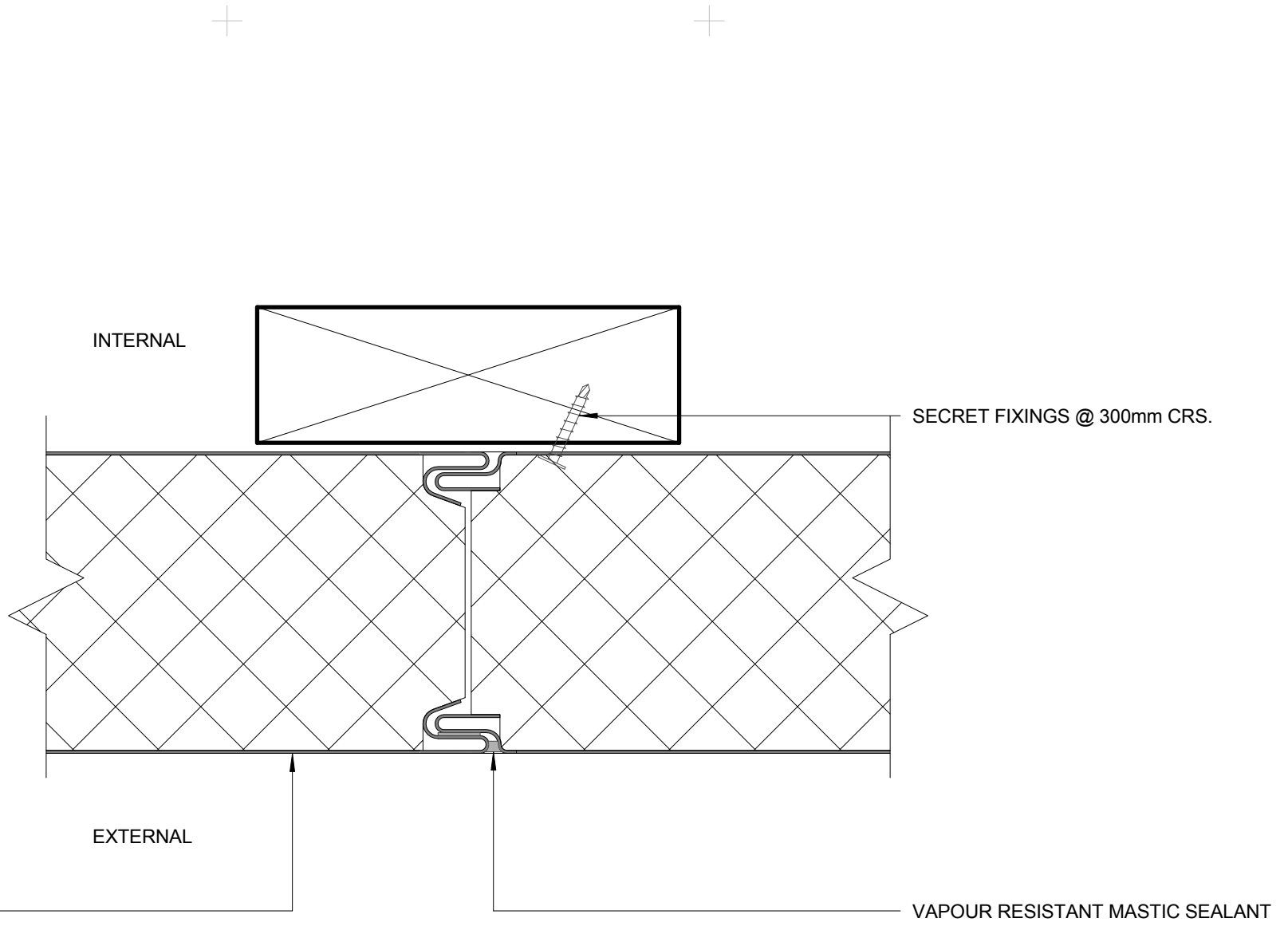
OUTSIDE

INSIDE

PIPE PENETRATION w PVC FLANGE



MIDFLOOR JOINT



PRE-FINISHED SELF DRILLING/TAPPING
SCREW WITH RUBBER WASHER

TIMBER

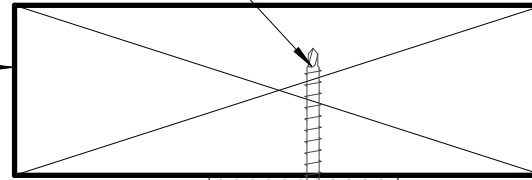
5mm ALUMINIUM
ANGLE CLEAT

ø5mm RIVETS

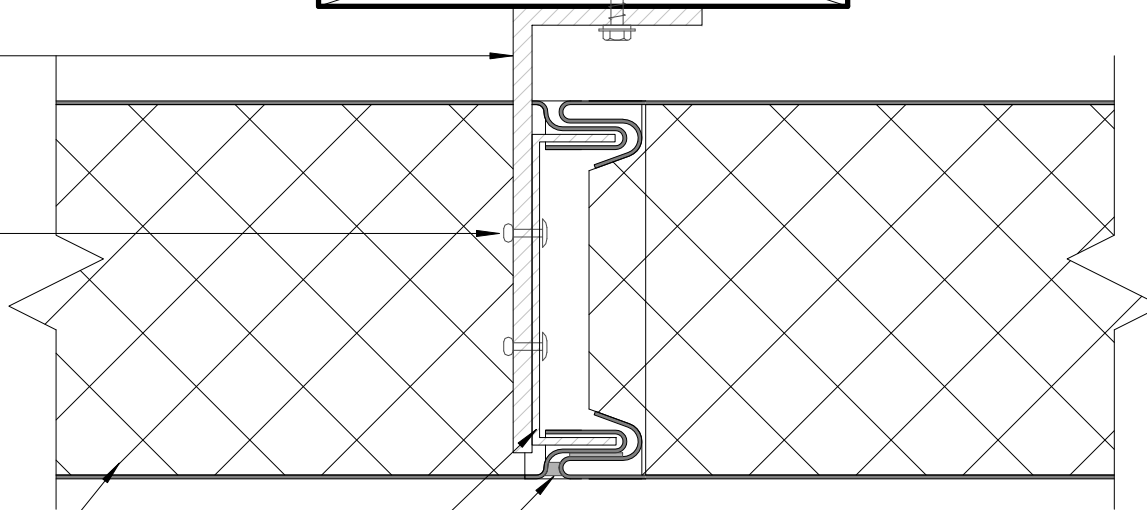
METALCRAFT
THERMOPANEL

ALUMINIUM BASE
CAP 300mm LONG MIN

VAPOUR RESISTANT
MASTIC SEALANT

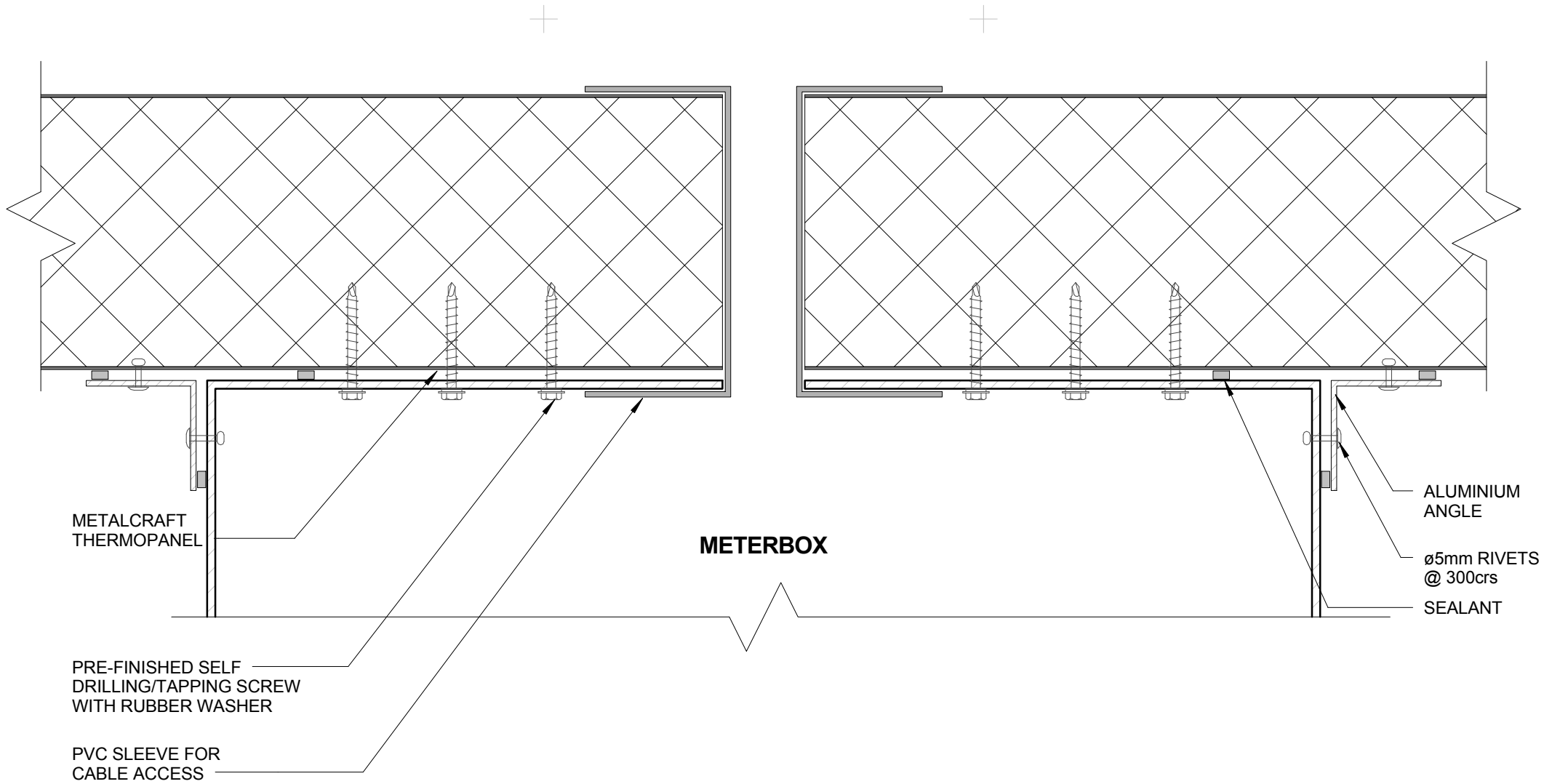


INTERNAL



EXTERNAL

SECRET FIXING JOINT 02



METERBOX JAMB HEAD AND SILL DETAIL

Thermopanel Wall Details

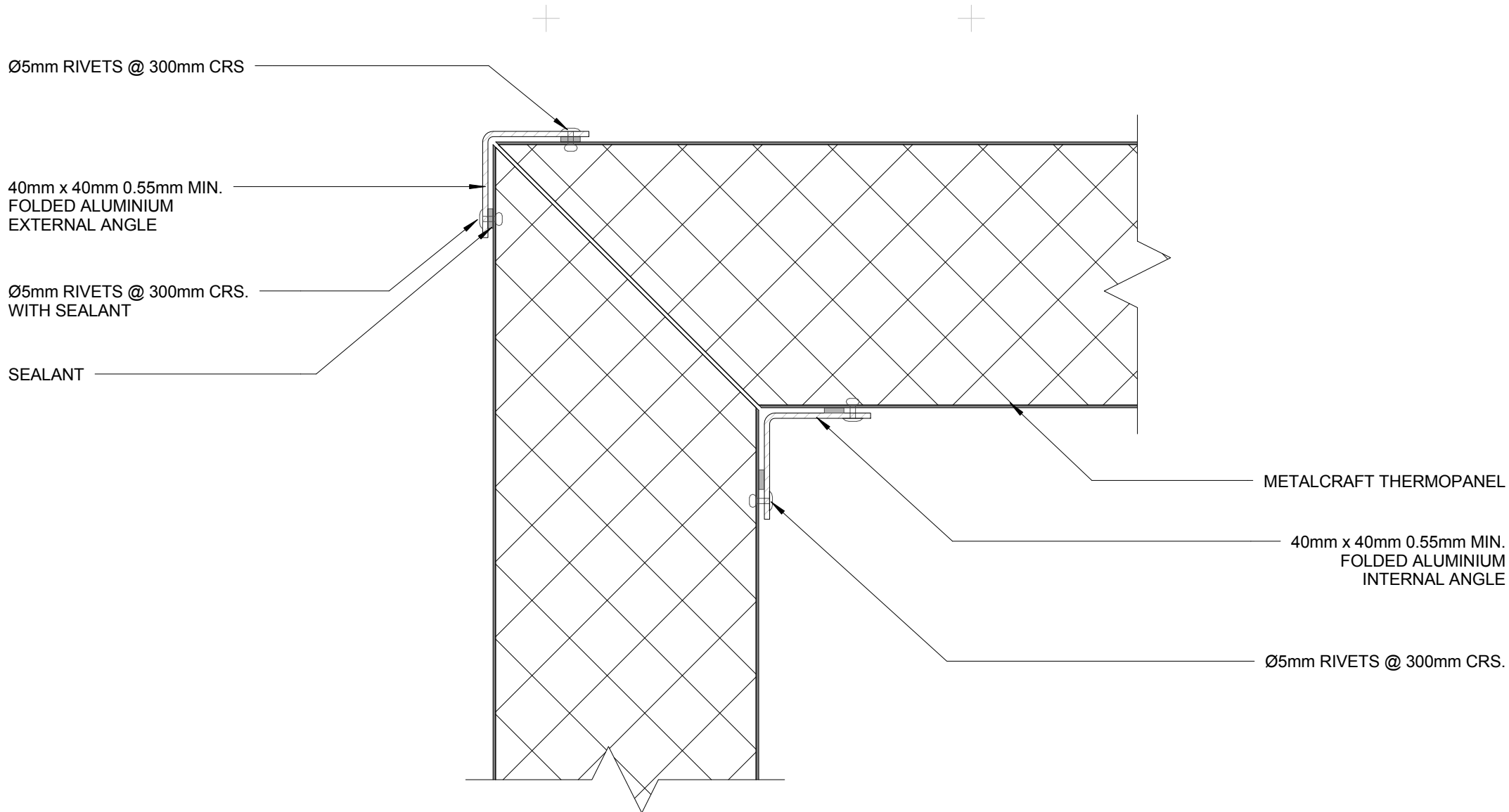
Reference TPWD

Date 30.08.2016

Scale 1 : 2

Sheet

10 / 21



NOTE:
ALUMINIUM ANGLES CAN BE
REPLACED WITH STEEL

INTERNAL/EXTERNAL CORNER DETAIL

Metalcraft
Insulated Panel Systems

DISCLAIMER:
All details are to be used for indicative purposes only and the designer should consult both the MRM code of practice version 2.2 /2012, E2 and all other relevant building codes
Details of the supporting mechanisms are indicative only. Compliance of the supporting mechanisms is the responsibility of the designer. Construction detail can vary for wall cladding. The underlay is detailed as a single line for simplicity and is indicative only. Building paper type and method of installation should comply with underlay manufacturers recommendations and NZBC regulations.

Thermopanel Wall Details

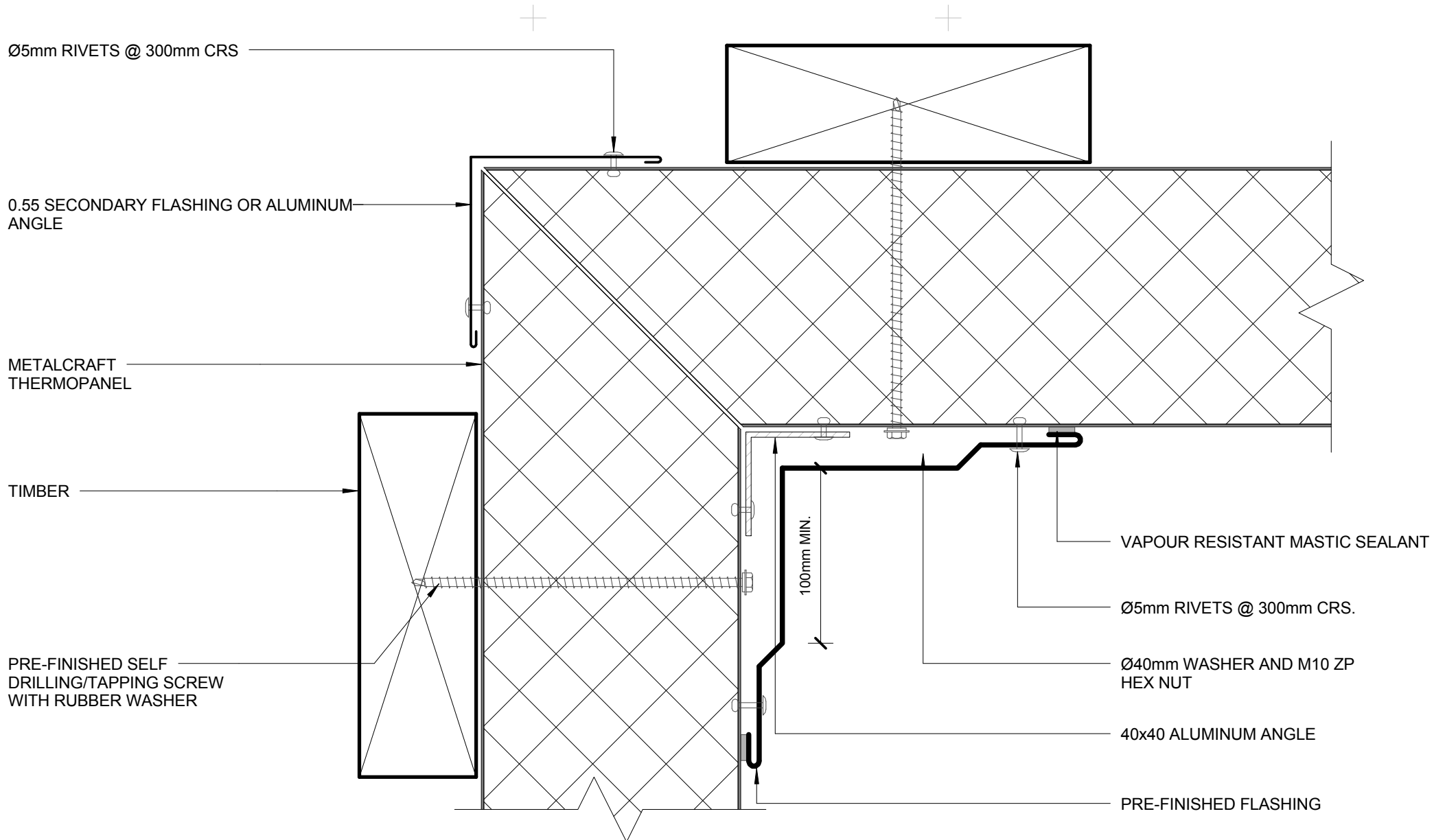
Reference TPWD

Date 30.08.2016

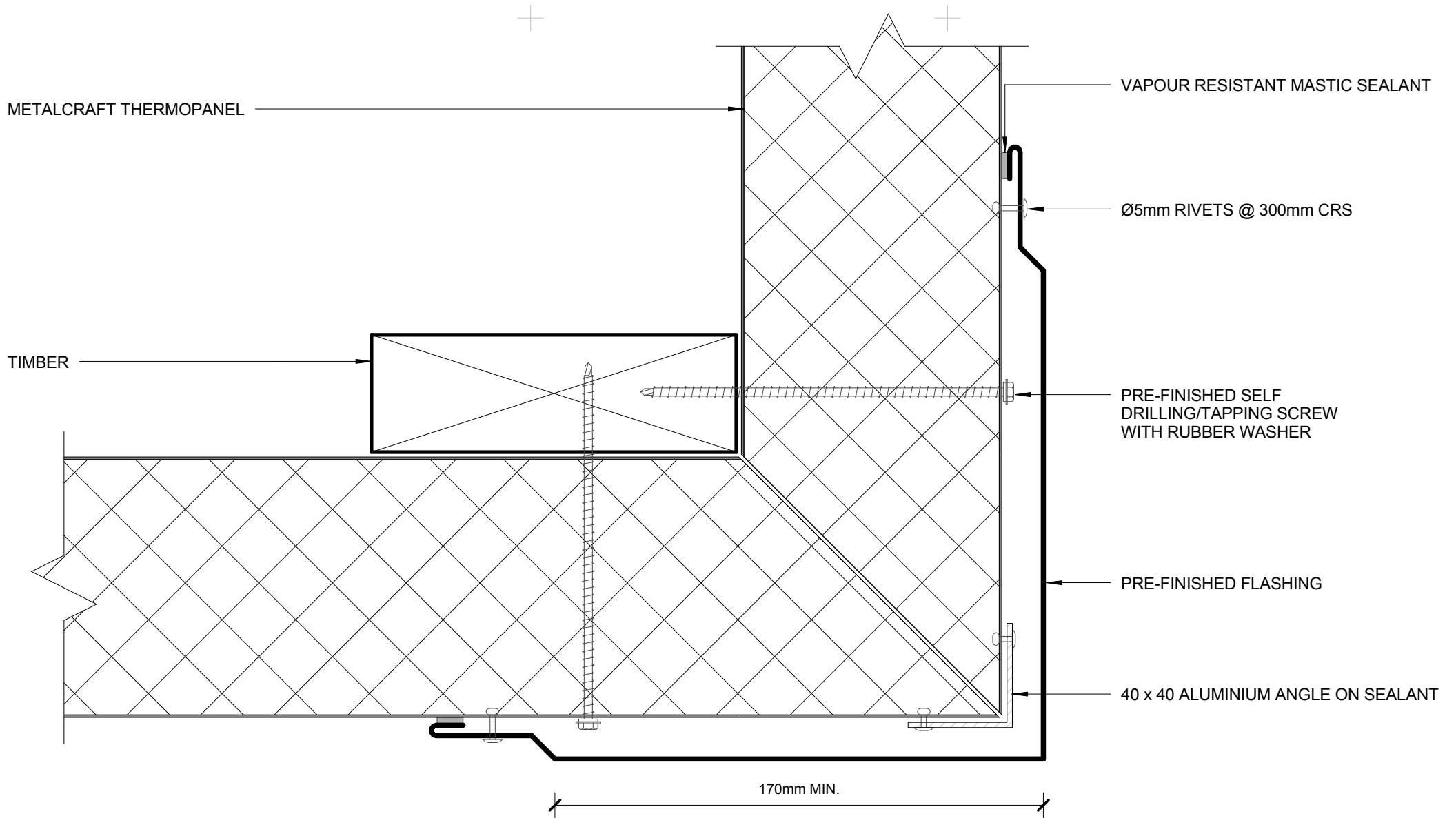
Scale 1 : 2

Sheet

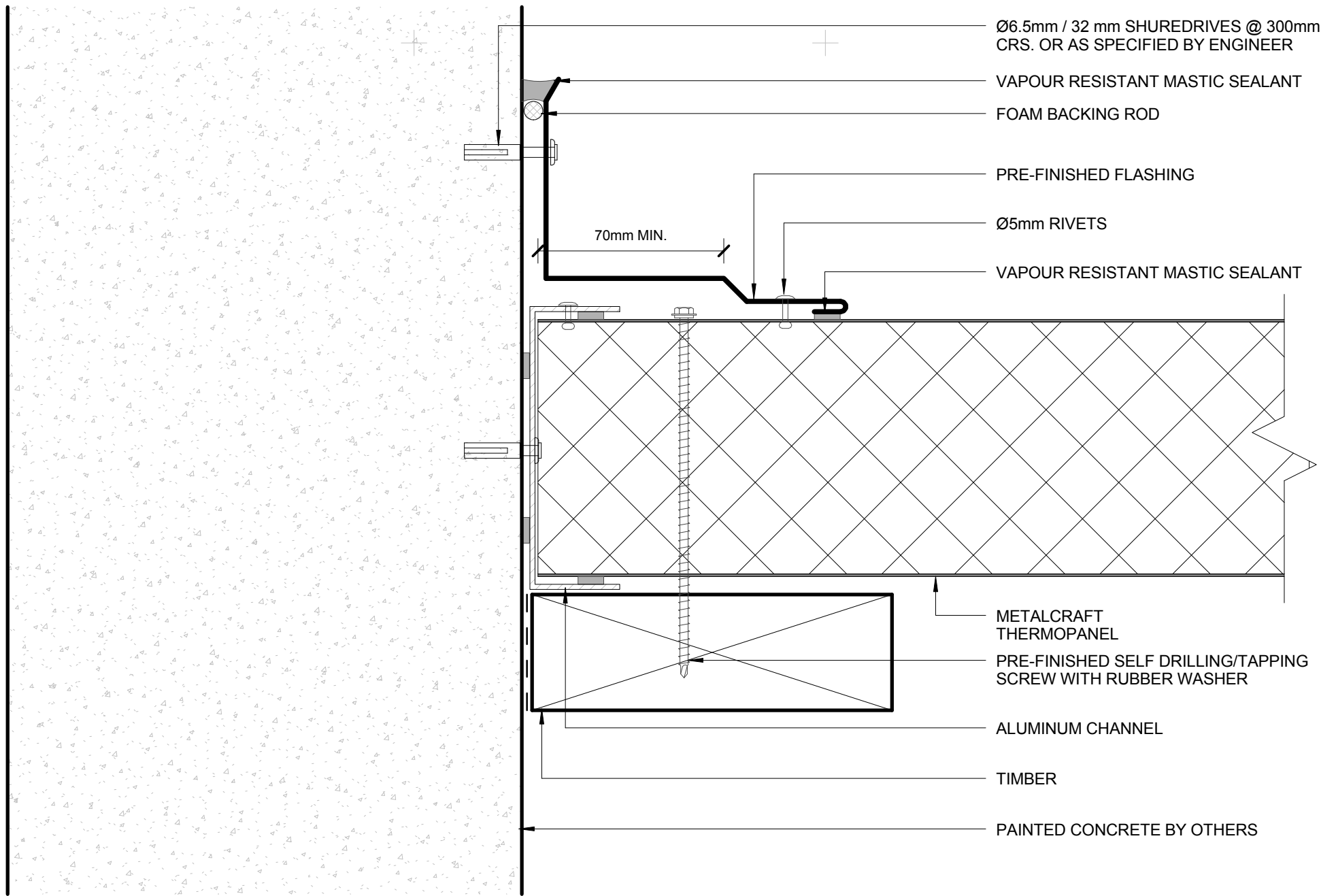
11 / 21



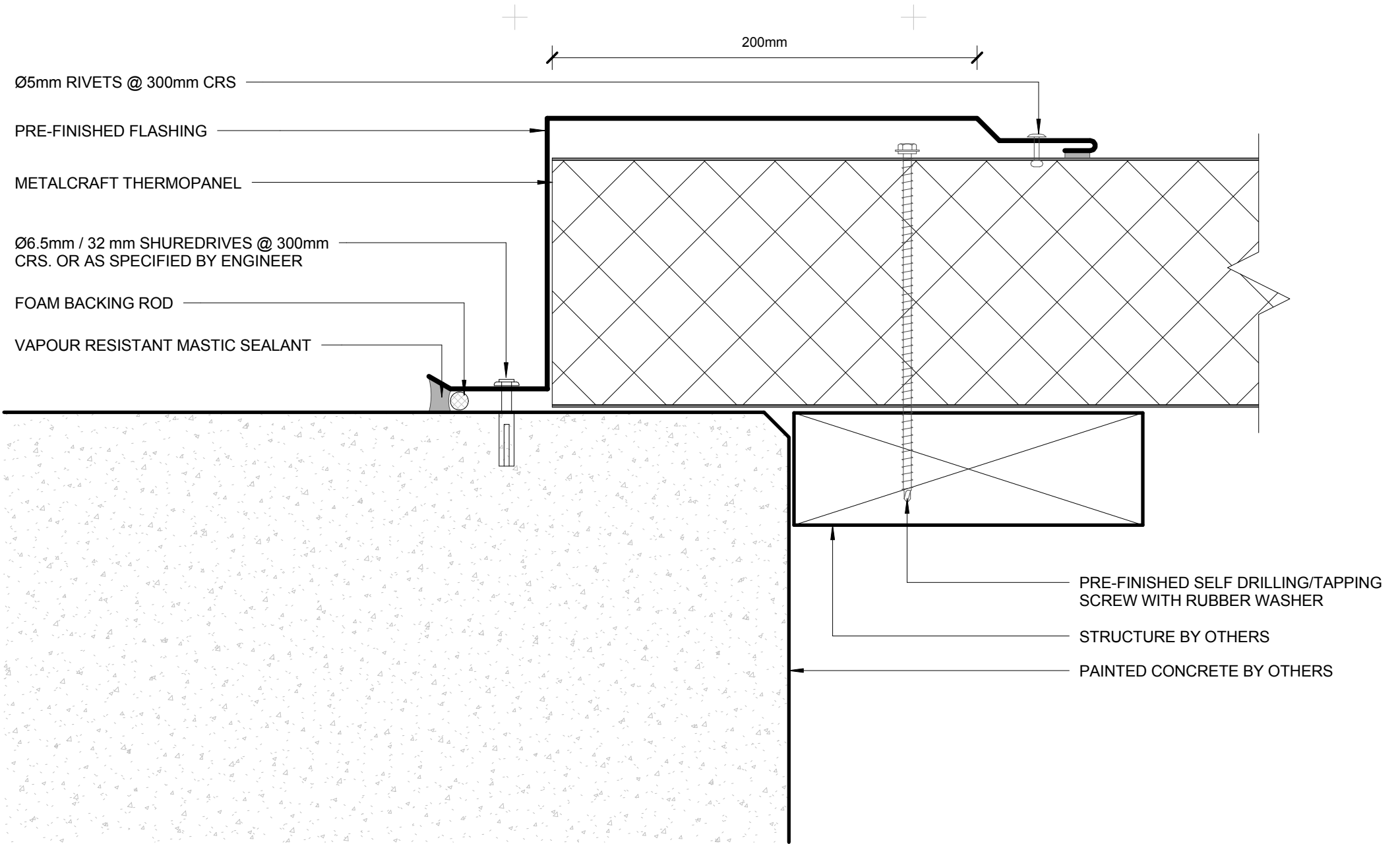
ALTERNATIVE INTERNAL CORNER



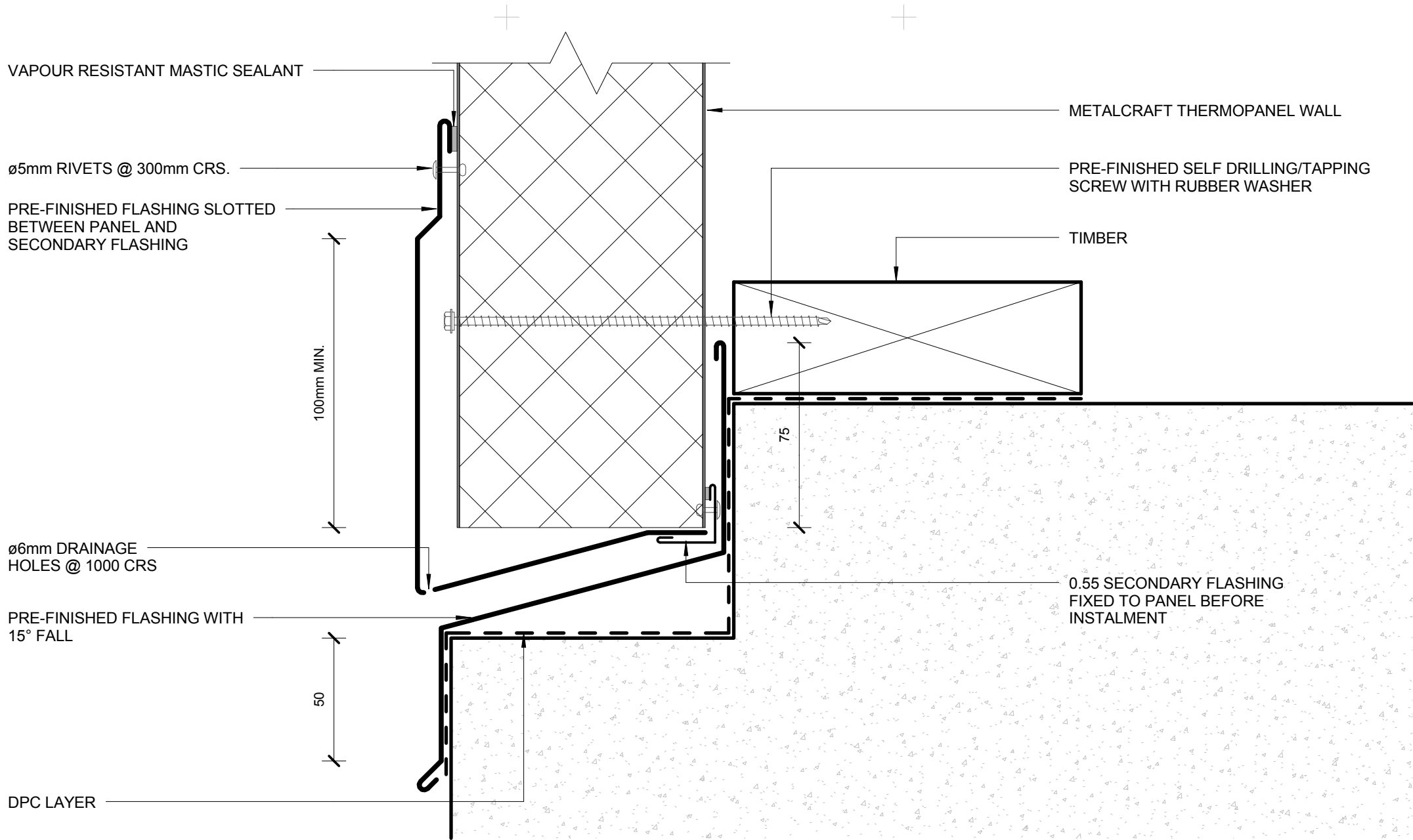
ALTERNATE EXTERNAL CORNER



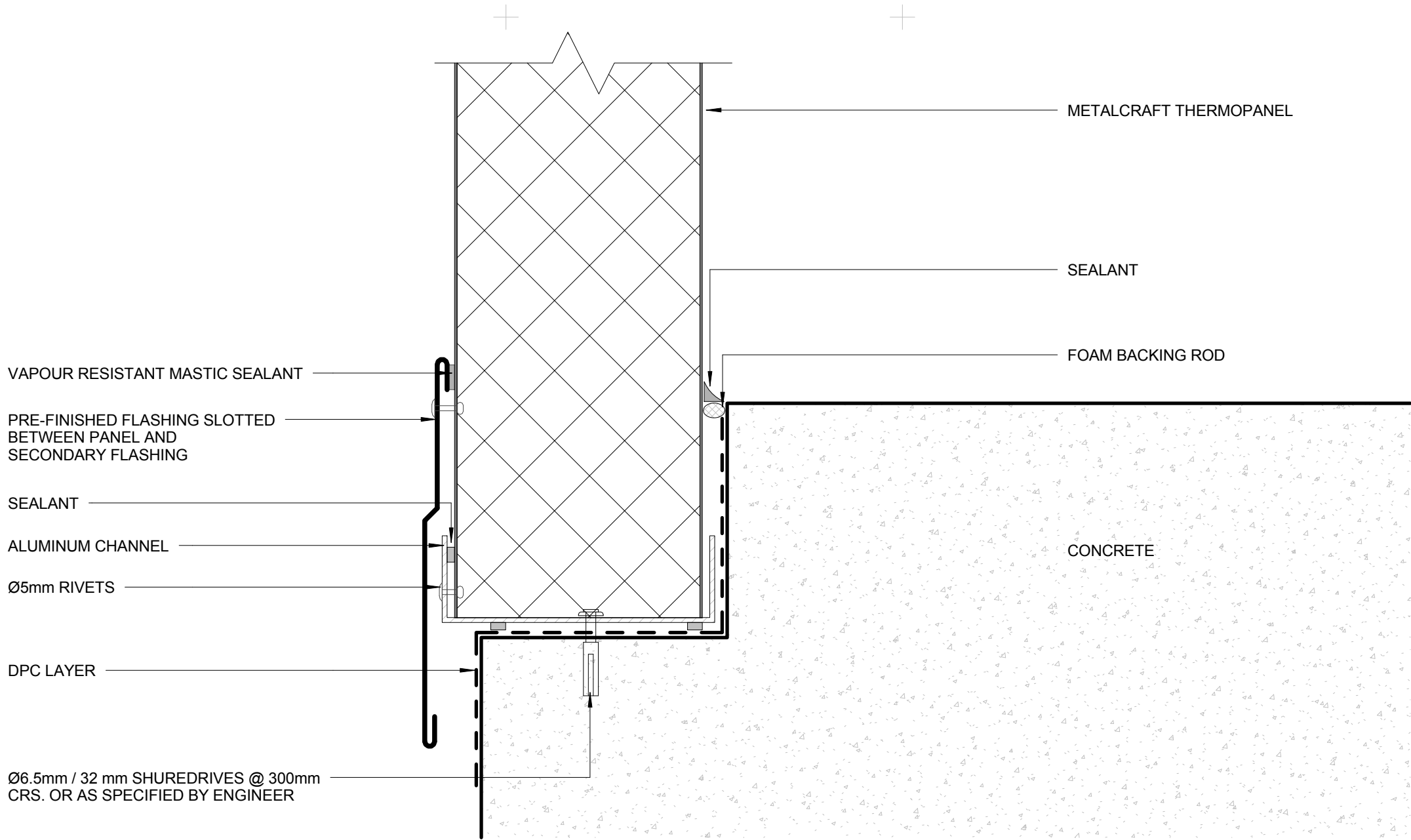
ABUTMENT 01



ABUTMENT 02



BOTTOM OF CLADDING 01



VAPOUR RESISTANT MASTIC SEALANT

PRE-FINISHED FLASHING SLOTTED
BETWEEN PANEL AND
SECONDARY FLASHING

SEALANT

ALUMINUM CHANNEL

Ø5mm RIVETS

DPC LAYER

Ø6.5mm / 32mm SHUREDRIVES @ 300mm
CRS. OR AS SPECIFIED BY ENGINEER

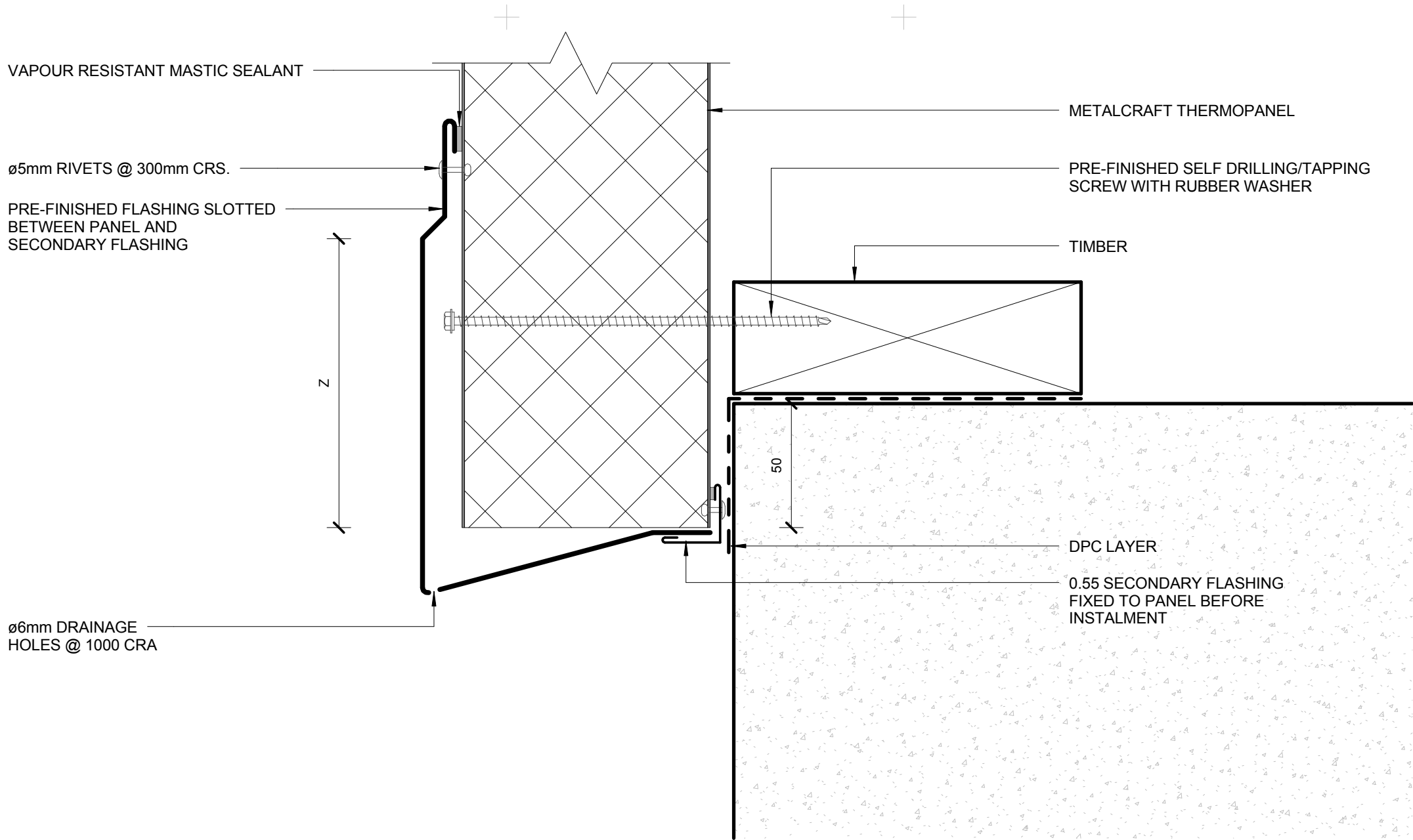
METALCRAFT THERMOPANEL

SEALANT

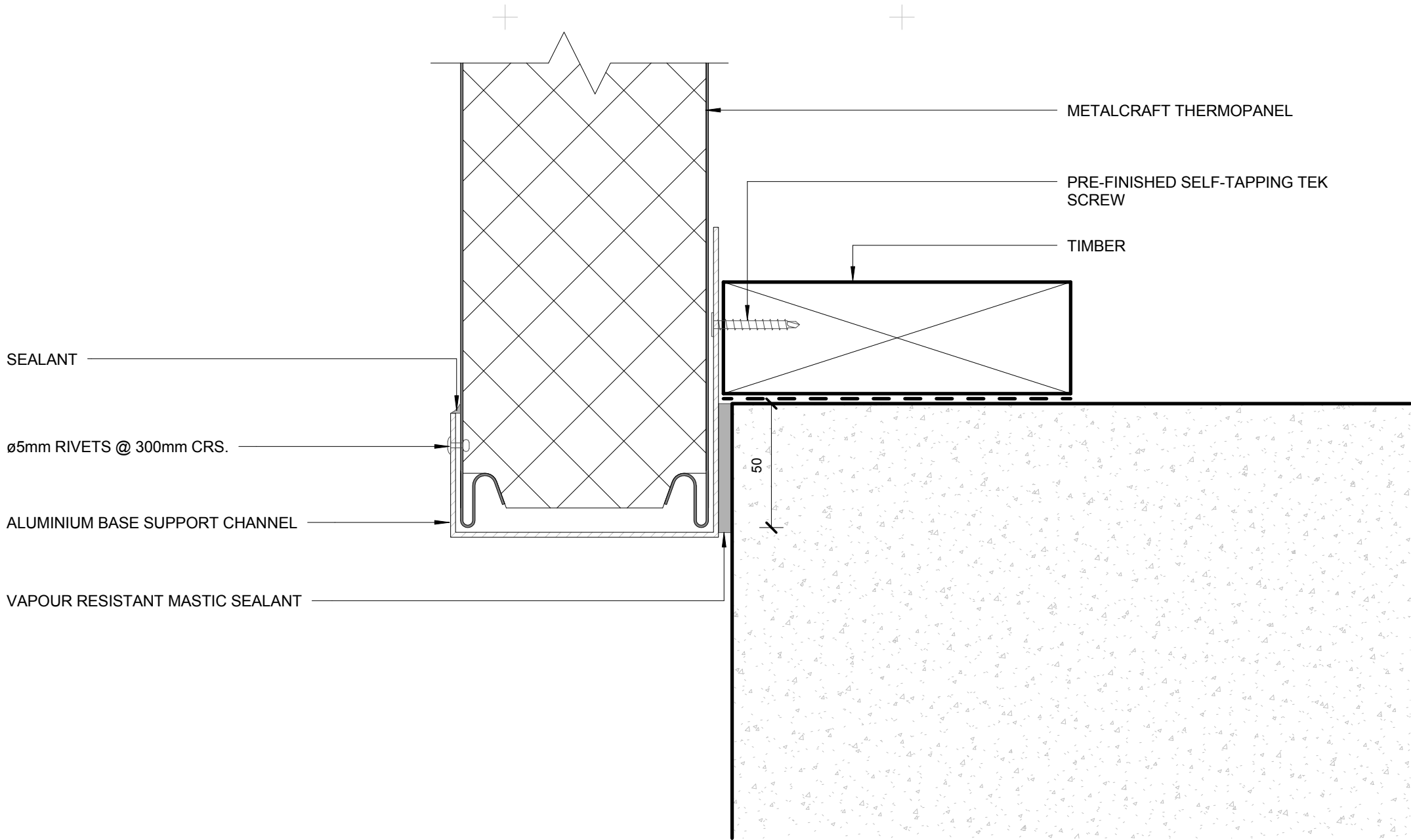
FOAM BACKING ROD

CONCRETE

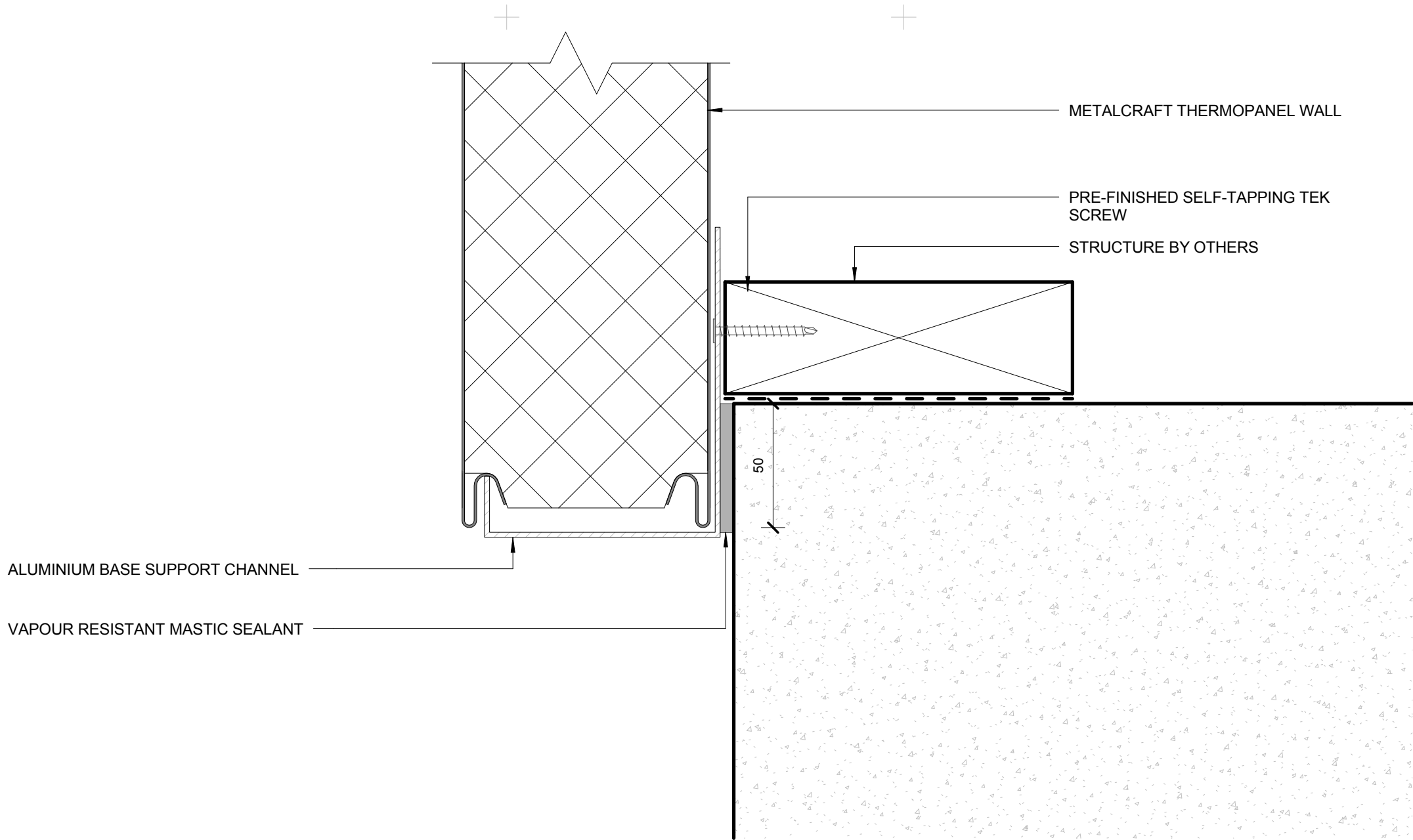
BOTTOM OF CLADDING 02



BOTTOM OF CLADDING 03



BOTTOM OF CLADDING 04



ALUMINIUM BASE SUPPORT CHANNEL

VAPOUR RESISTANT MASTIC SEALANT

METALCRAFT THERMOPANEL WALL

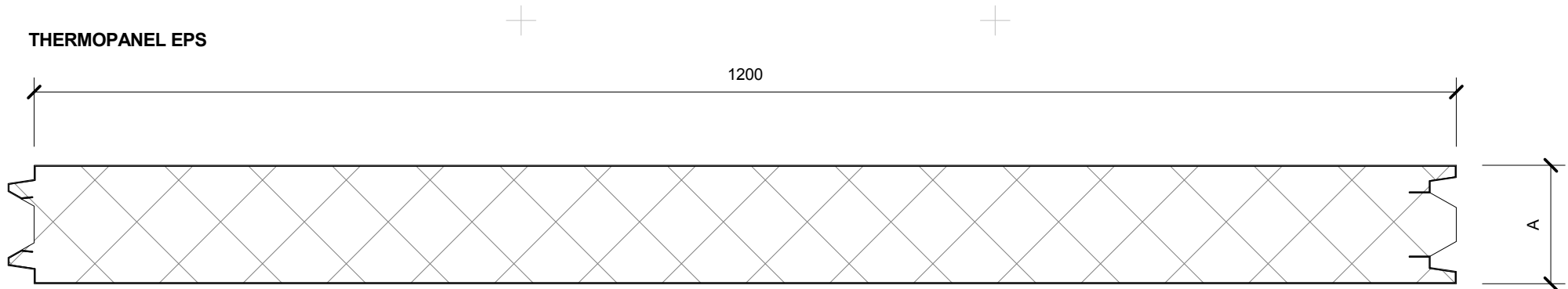
PRE-FINISHED SELF-TAPPING TEK SCREW

STRUCTURE BY OTHERS

50

BOTTOM OF CLADDING 05

THERMOPANEL EPS



FLAT FINISH - AVAILABLE BOTH SIDES

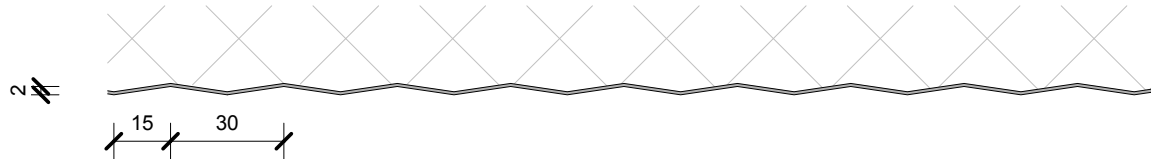
SCALE @ 1:5

A= 50, 75, 100, 125,
150, 200, 250mm

INTERNAL LINER FINISHES

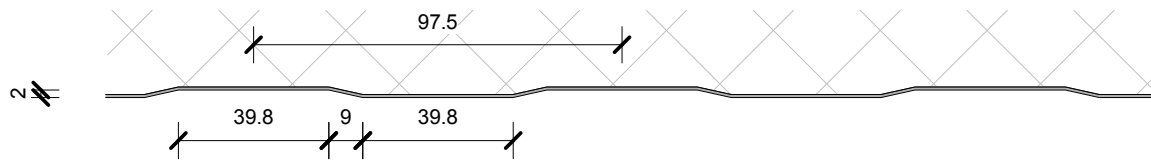
SILKLINE FINISH

- ONE SIDE ONLY



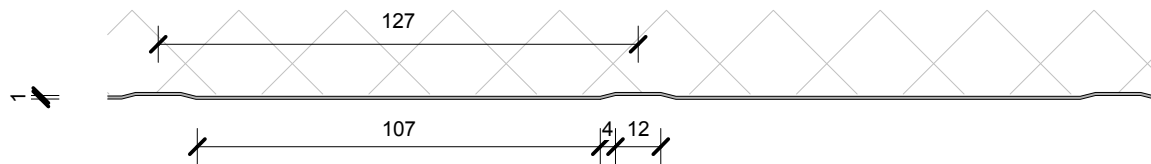
MESA FINISH

- ONE SIDE ONLY



RIBBED FINISH

- AVAILABLE BOTH SIDES



SCALE @ 1:2