

INSTALLATION INSTRUCTIONS

BIB | Commercial and Industrial PINK® BATTS® BUILDING INSULATION BLANKET (BIB)

Installation Instructions

Correct installation with no compression, gaps or folds is critical to ensure Pink® Batts® Building Insulation Blanket performance is not compromised.

Safety:

Each installation is unique so prior to installation check for all hazards that may cause injury:

- Carry out any required repair work before starting installation
- Ensure safety measures for working at height are in place (refer to the Health and Safety in Employment Act)
- Ensure there is adequate lighting to identify any hazards
- Treat all electrical cables as live, being careful not to cut or expose cables and wires

- Beware of other sharp objects (protruding nails, splinters etc), pests (bees and wasps), loose boards and pipe work

Note: Seek professional advice if you are unsure how best to isolate the hazard or have a professional installer carry out the work on your behalf.

We recommend PinkFit® professional installers. PinkFit® are a nationwide network of professional installers who guarantee that their completed installation will meet the requirements of NZS 4246:2016.

For your local PinkFit® installer call **0800 746 534** or visit pinkbatts.co.nz/installing-pink-batts/

Installation:

Any slight irritation to exposed skin caused by the fibres in glass wool, or through their inhalation, is harmless and temporary.

However for your comfort while installing, it's recommended you wear:

- Loose fitting work clothes which cover the arms and legs
- Covered shoes
- Dust mask
- Safety glasses

For safety while installing, it's recommended you use:

- Cut resistant gloves (if knife is used)
- Kneepads (for retrofitting)

For an efficient installation, the following tools are recommended:

- Stable working platform (for new build)
- Knife
- Tape measure
- Head torch (for retrofitting)
- Kneeling board or planks (for retrofitting)

Instructions

Roof Applications:

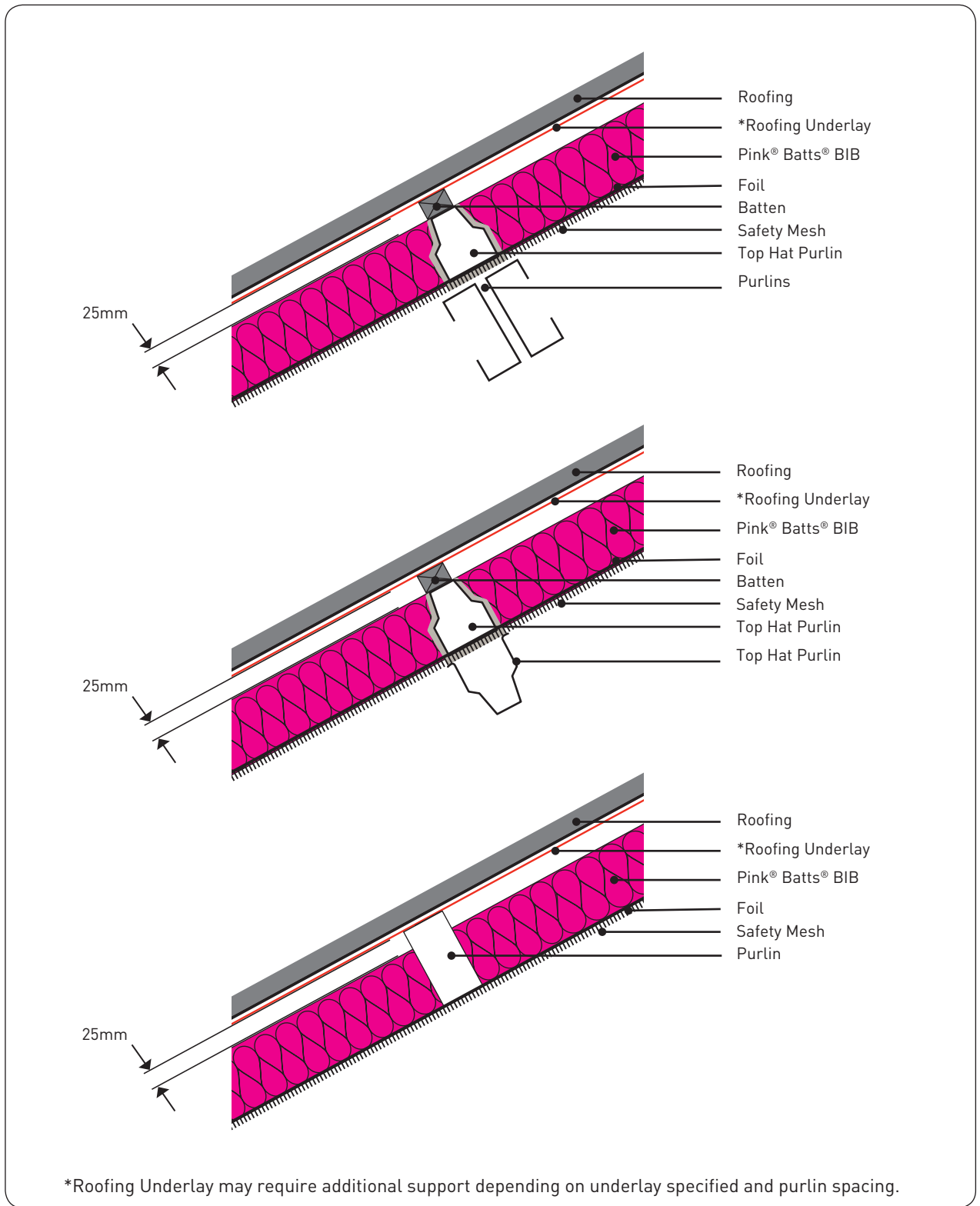
The methods of application described in this document are the most commonly used in New Zealand and should not be taken as specific design.

- Ensure the product is installed dry. If the product is wet replace before installing
- Full support of insulation on mesh or safety netting is required
- A 25mm clearance must be maintained between the insulation and roofing underlay. See diagrams overleaf for typical installations
- Fit insulation tightly around all roof penetrations, vent pipes, etc
- Where flues or other similar heat emitting elements pass through the insulation layer a 150mm clearance should be maintained between that item and the insulation
- Where cutting is necessary use a sharp knife and straight edge
- Fit Pink® Batts® insulation beneath electrical wiring and plumbing (see caution below)

Refer to NZS 4246:2016 for further information related to the correct installation of insulation around electrical auxiliary devices and downlights.

! *Caution: Electrical cables and equipment partially or completely surrounded with bulk thermal insulation may overheat and fail. This applies to wiring installed prior to 1989.

Commercial Roof Insulation Installation



Wall Applications

The methods of application described in this document are the most commonly used in New Zealand and should not be taken as specific design.

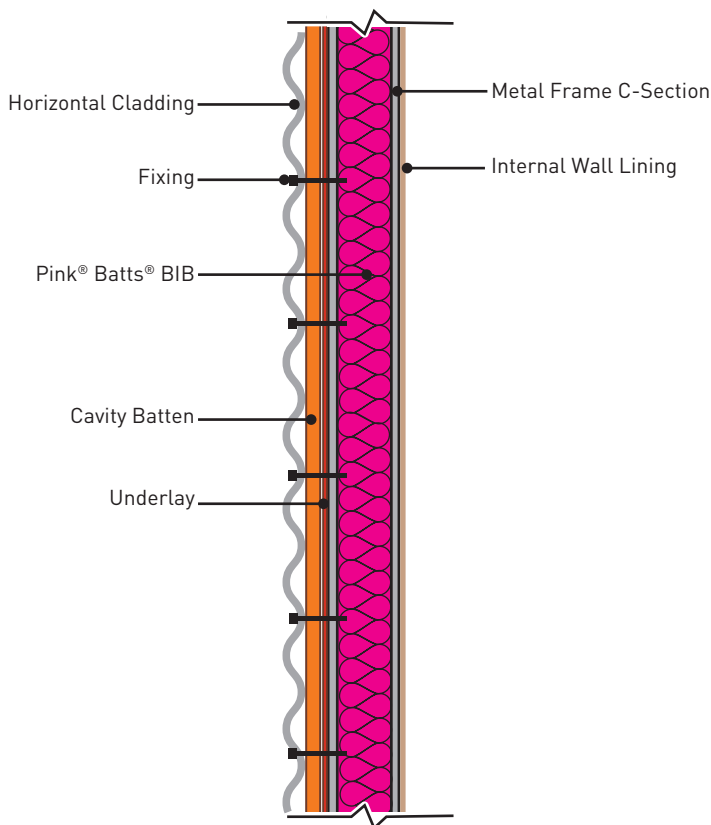
External Wall Installation:

- Ensure the product is installed dry. If the product is wet, replace it before installing
- Where possible slot the piece of insulation into the C section. Friction fit product between framing in other cases
- If cutting is required, cut to size allowing insulation to fit neatly into the C section
- Ensure there are no gaps, folds or compression of product
- Fill gaps around windows and doors with off-cuts
- Do not cover vents. Insulate around vents to allow unhindered ventilation
- Fit insulation behind electrical wiring* and plumbing work. Partially cut insulation and place around wires or pipes if necessary
- 75mm clearance around metal chimneys and flues
- An absorbent wall underlay is recommended between the insulation and the wall cladding

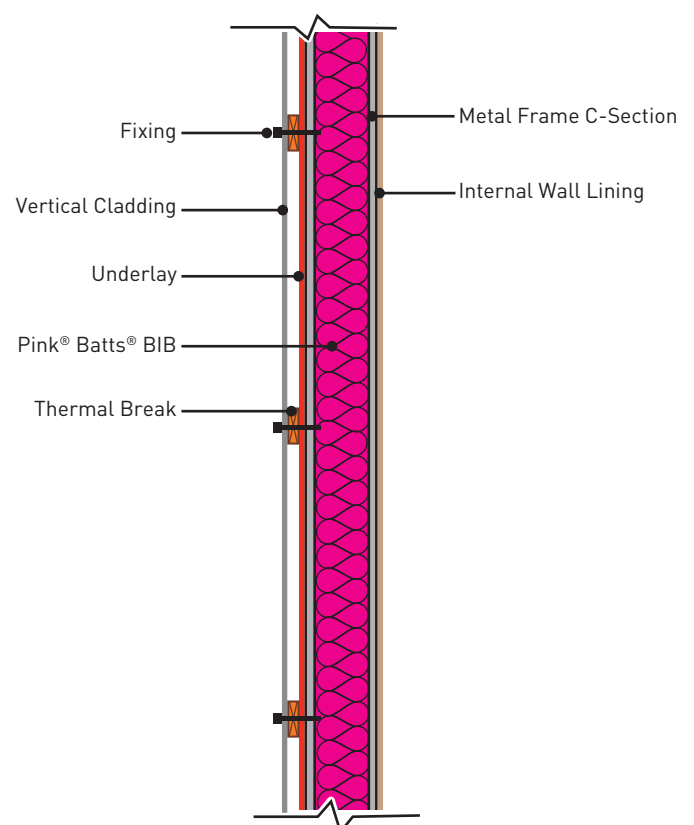
! *Caution: Electrical cables and equipment partially or completely surrounded with bulk thermal insulation may overheat and fail. This applies to wiring installed prior to 1989.

Refer to NZS 4246 for the correct installation of insulation around electrical auxiliary devices and downlights.

Horizontal Profile Metal Cladding



Vertical Profile Metal Cladding



Product Specifications

	BRANZ APPRAISED	GREENGUARD CERTIFICATION	PRODUCT CODE	SIZE (m)	NOMINAL STABILISED THICKNESS* (mm)	NOMINAL TOTAL AREA PER PACK (m ²)	PIECES PER BALE
Pink® Batts® BIB R1.2 Blanket		✓	7250001	1.2m x 12m	50	28.8	2
Pink® Batts® BIB R1.8 Blanket	✓	✓	7270001	1.2m x 8m	75	19.2	2
Pink® Batts® BIB R2.2 Blanket			7210009	1.2m x 8m	100	19.2	2
Pink® Batts® BIB R2.4 Blanket		✓	7210052	1.2m x 8m	100	19.2	2
Pink® Batts® BIB R2.6 Blanket		✓	7200076	1.2m x 6m	110	14.4	2
Pink® Batts® BIB R2.8 Blanket			7200082	1.2m x 8m	130	9.6	1
Pink® Batts® BIB R3.2 Blanket		✓	7200450	1.2m x 8m	135	9.6	1
Pink® Batts® BIB R3.6 Blanket			7200081	1.2m x 8m	140	9.6	1
Pink® Batts® Skillion BIB R3.2 Blanket			7200090	1.2m x 8m	125	7.2	1
Pink® Batts® BIB Retrofit R1.8 VPACK		✓	7200151	1.2m x 6m	80	7.2	1
Pink® Batts® BIB Retrofit R2.4 VPACK		✓	7200152	1.2m x 6m	95	7.2	1
Pink® Batts® BIB Retrofit R2.8 VPACK		✓	7200155	1.2m x 6m	110	7.2	1
Pink® Batts® BIB Retrofit R3.2 VPACK		✓	7200156	1.2m x 6m	135	7.2	1

* Stated thicknesses are values at which stated R-values are achieved and are likely to be minimum values

Custom lengths are available, subject to minimum order quantities. Please contact our customer service team (0800 746 522) for further information on availability, lead times etc.

Storage and Maintenance

Pink® Batts® insulation should be protected from damage and weather. Store under cover in clean, dry conditions. The installed product should remain dry at all times. If the product becomes wet or damp, the source of dampness (e.g. leak in building) should be repaired and any wet or damp insulation should be removed and replaced with new insulation of an equivalent R-value.

Disposal of bags

Recyclable LLDPE bags are used for packaging of Pink® Batts® insulation. These bags are categorised as Rec 4 and can be placed in a recyclable refuse collection bin. For further details download the relevant product data sheet from pinkbatts.co.nz

Accreditations/Appraisals/Certifications



DISTRIBUTED BY
Tasman Insulation New Zealand Ltd
9-15 Holloway Place, Penrose, Auckland,
New Zealand

This document supersedes all previous versions and may have been superseded; is a guide only and the purchaser should ascertain the suitability of this product for the end-use situation intended and when used in conjunction with other products; and is provided without prejudice to Tasman Insulation New Zealand Ltd (Tasman) standard terms of sale. Tasman retains the right to change specifications without prior notice. Refer to www.pinkbatts.co.nz or consult Tasman for further information. Do not use this product for any application not detailed in this document. All claims about this product are subject to any variation caused by normal manufacturing process and tolerances. The liability of Tasman and its employees and agents for any errors or omissions in this document or otherwise in relation to the product is limited to the fullest extent permitted by law. Except where the consumer acquires the goods for the purposes of a business, any rights a consumer may have under the Consumer Guarantees Act are not affected. The colour PINK and Pink® are registered trademarks of Owens Corning used under license by Tasman Insulation. Batts® is the registered trade mark of Tasman Insulation.



Always.