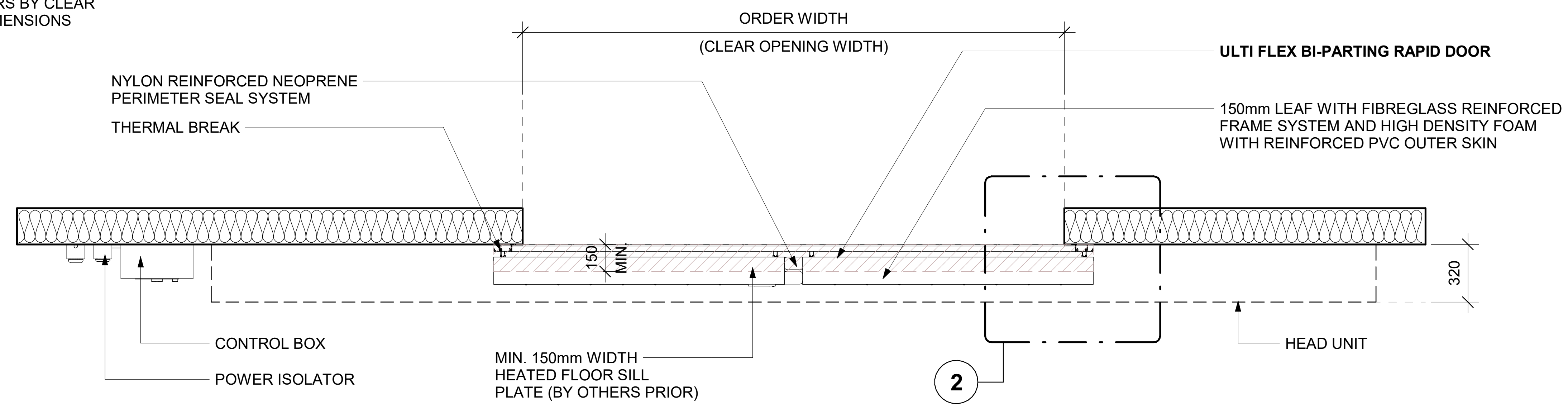
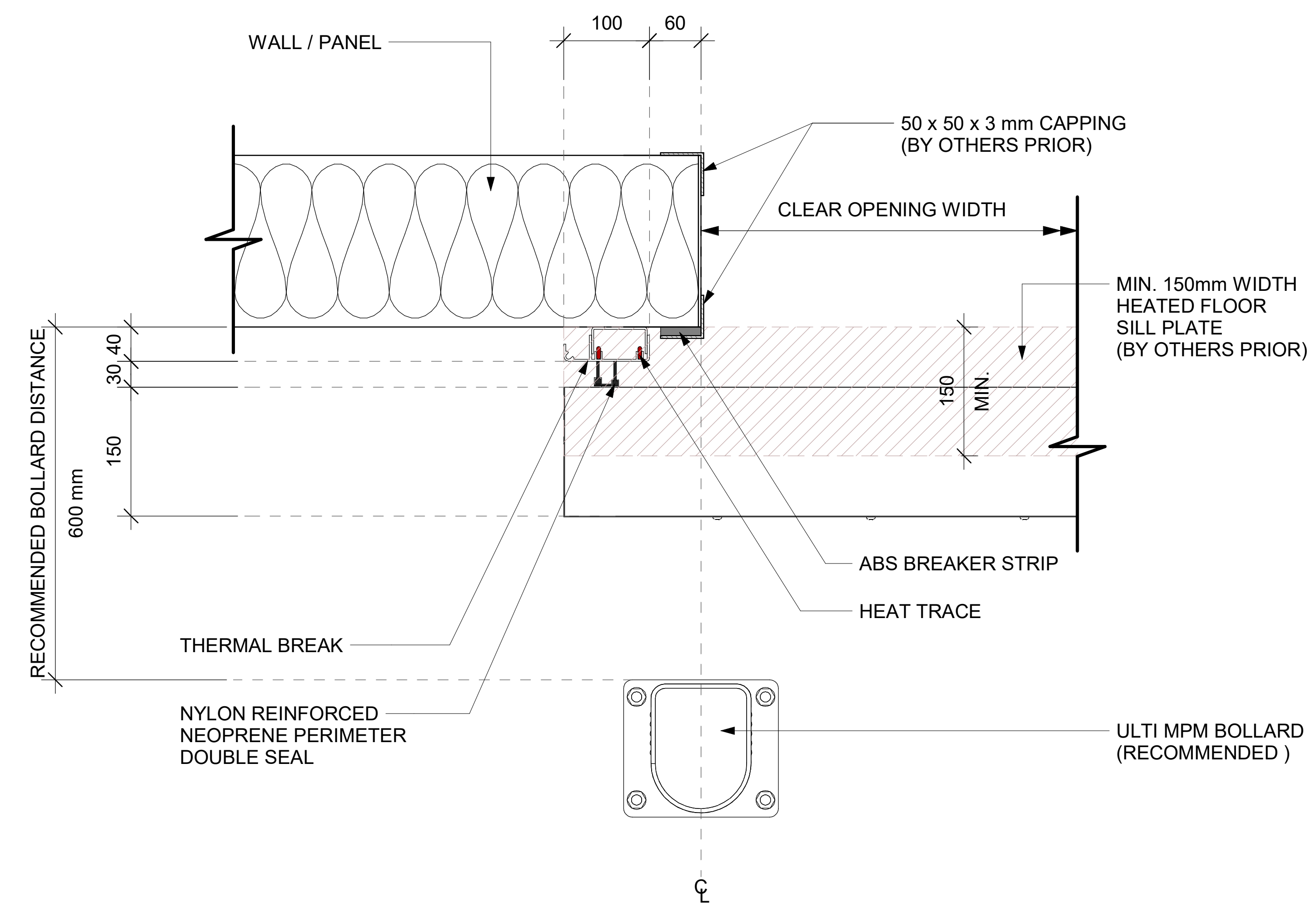


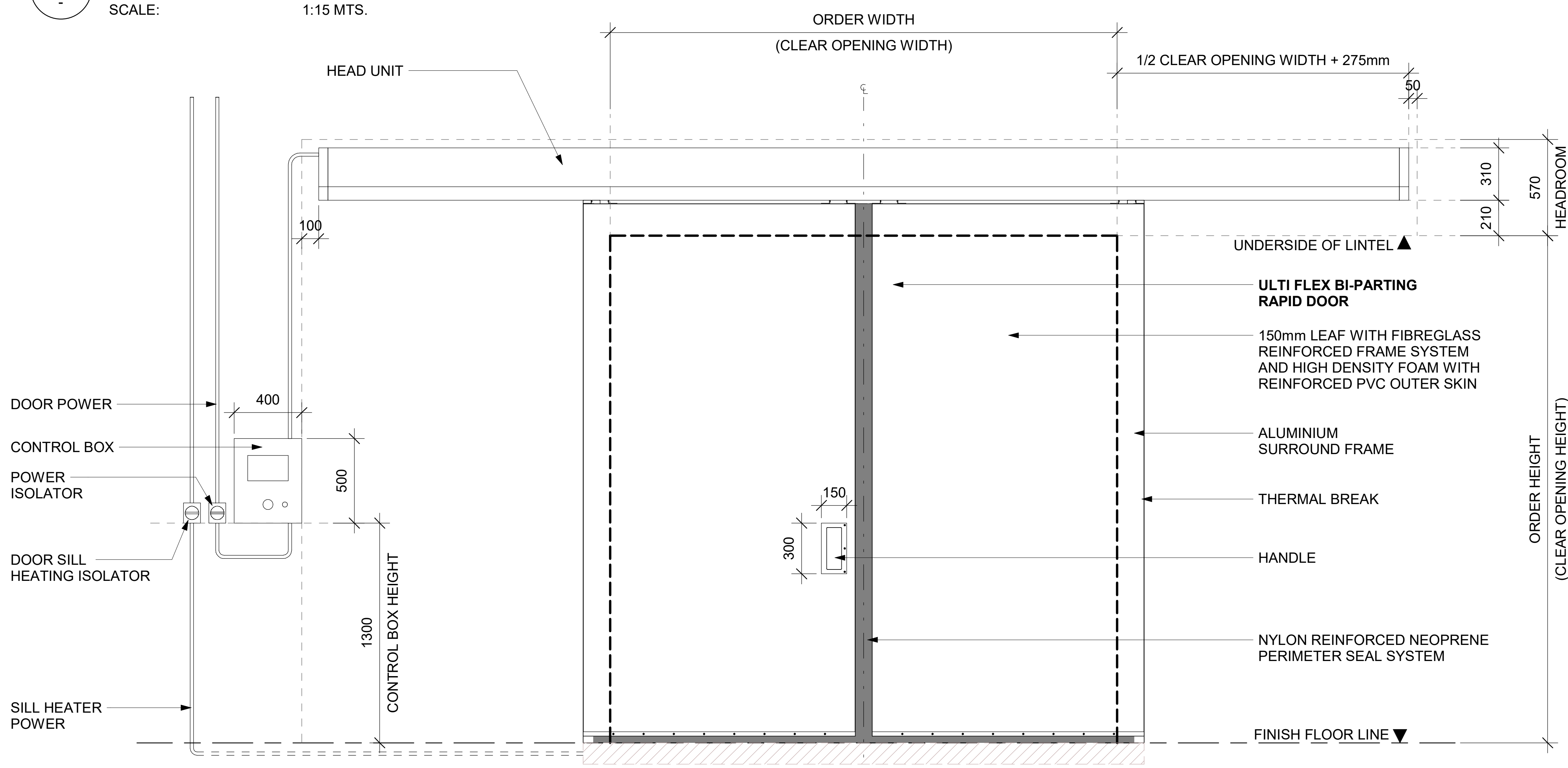
NOTE:
ORDER DOORS BY CLEAR
OPENING DIMENSIONS
REQUIRED



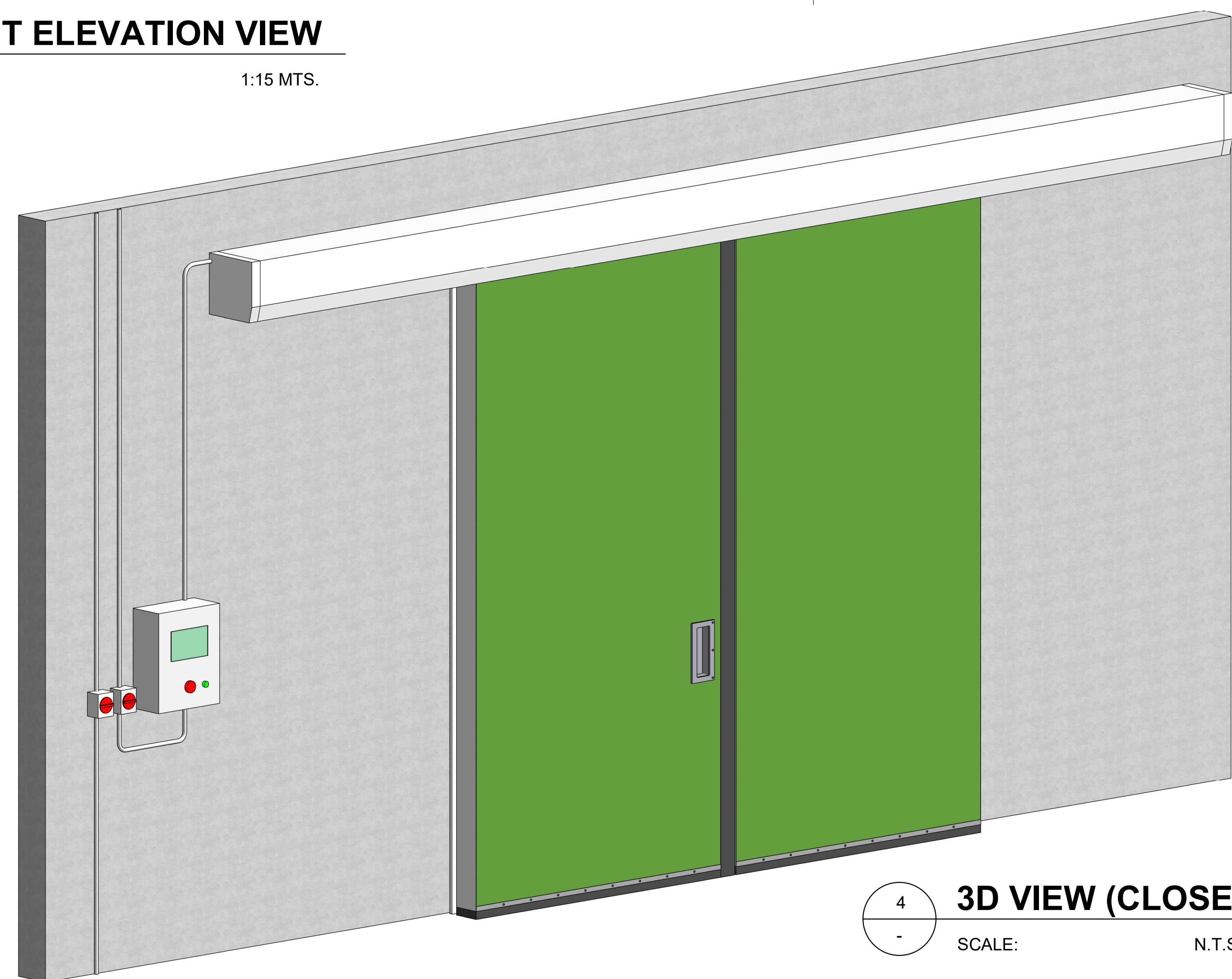
1 FLOOR PLAN VIEW
SCALE: 1:15 MTS.



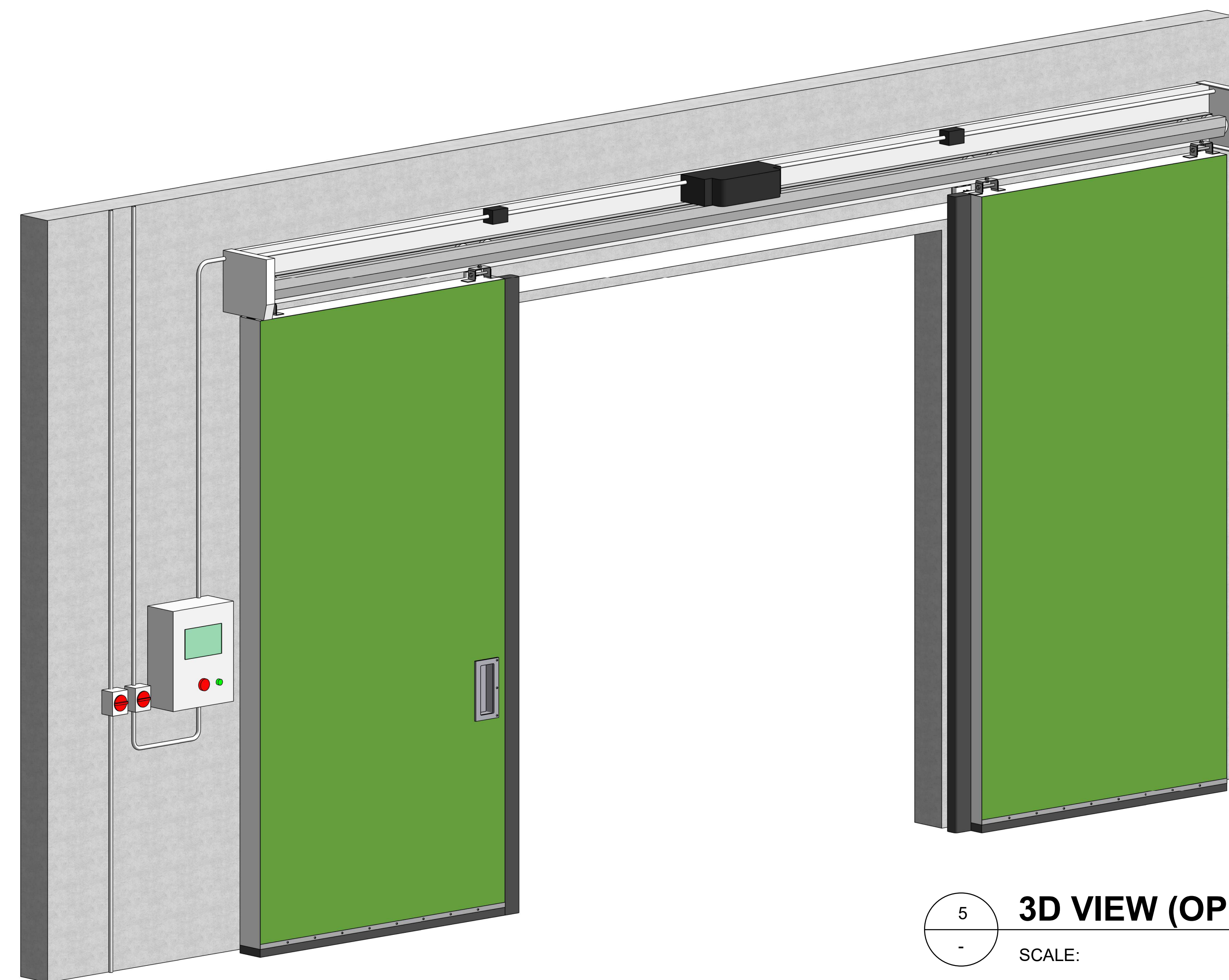
2 CROSS-SECTION THROUGH DOOR / WALL
SCALE: 1:4 MTS.



3 FRONT ELEVATION VIEW
SCALE: 1:15 MTS.



4 3D VIEW (CLOSE)
SCALE: N.T.S.



5 3D VIEW (OPEN)
SCALE: N.T.S.

ulti group

© Ulti Group Ltd, 2021

NOTE:
CONTACT ULTI GROUP FOR ANY
CUSTOMISATIONS AND TO DISCUSS
PROJECT SPECIFIC INFORMATION

www.ultigroup.co.nz
hello@ultigroup.co.nz
Phone: 0800 807 753
105 Glover Road, Hawera, 4610

SPECIFICATIONS :

RELEASED VERSION NO. : **VERSION 3**

PRODUCT GROUP : **HIGH SPEED DOORS**

PRODUCT ID : **00000**

APPLICATION : **INTERNAL & EXTERNAL**

STANDARD SIZE : **2400 mm WIDE x 3600 mm HIGH**

MINIMUM SIZE : **1200 mm WIDE x 2000 mm HIGH**

MAXIMUM SIZE : **3200 mm WIDE x 5400 mm HIGH**

HEADROOM : **570 mm**

SIDE ROOM - MOTOR SIDE :

1/2 CLEAR WIDTH + 275 mm

SIDE ROOM - NON MOTOR SIDE :

1/2 CLEAR WIDTH + 275 mm

STANDARD FRAME MATERIAL : **ALUMINIUM SURROUND FRAME**

STANDARD FRAME COLOUR : **MILL FINISH ALUMINIUM**

HEAD UNIT MATERIAL : **GALVANISED STEEL**

HEAD UNIT COLOUR : **RAL 9002 (STANDARD)**

STANDARD CURTAIN MATERIAL : **REINFORCED PVC OUTER SKIN**

CURTAIN COLOUR (INSIDE / OUTSIDE) : **RAL 6018 (STANDARD)**

POWER SUPPLY : **3 PHASE, 400V + NEUTRAL + EARTH 15 Amp**

HEATING POWER SUPPLY : **SINGLE PHASE, 230V + NEUTRAL + EARTH 20 Amp**

WORKING TEMPERATURE : **FROM -40°C UP TO 50°C**

TITLE:
ULTI FLEX BI-PARTING RAPID DOOR

SHEET NO. : 1 OF 1
DATE : OCT. 18, 2021

DRAWING NUMBER :
ULTIFLEX-BP-001

APPROVED BY : J.PRESTIDGE

DRAWN BY : J.ENRIQUEZ

SCALE : As indicated
SHT. SIZE : A0

*All dimensions are in millimeters unless otherwise specified