

Thermakraft™
WATERGATE
Plus



Thermakraft
ONE WRAP
SYSTEM

10 Products - One system
One warranty

Thermakraft™ WATERGATE PLUS

**New Zealand's premium all-purpose,
fire retardant wall wrap.**

Watergate Plus is specifically designed as a wall underlay for use behind exterior wall cladding. Made from synthetic materials Watergate Plus is fire retardant, water resistant and vapour permeable. The water vapour transfer rate of the product has been optimised to minimise condensation risk in homes without compromising its primary water barrier properties.

Watergate Plus is part of the Thermakraft One Wrap System. Its unique construction allows for easier installation while maintaining best in class performance qualities.



Watergate Plus

Premium Synthetic Wall Wrap



Application Method

- Fix Watergate Plus underlay with printed side facing the exterior and run horizontally.
- Fix to all exterior walls from below bearers to the top plate. Watergate Plus underlay is available in widths of 2740mm and 1370mm. The 2740mm width product is generally wide enough to cover from below the bottom plate to the top plate.
- **Timber Framing:** Pull the Watergate Plus underlay tight and fix securely to the frame with fasteners such as galvanized Little Grippers, 6mm-8mm staples or 20mm large head galvanized clouts at 300mm centres horizontally and vertically.
- **Steel Framing:** Ensure frame is free from oil, dust and dirt. Fix securely using construction grade double-sided tape or adhesive or galvanized flat head screws that are appropriate for external framing and roofing use, at 300mm centres.

Note: Check adhesive compatibility with Watergate Plus and the steel framing materials before use.

If using a tape: Apply double-sided tape onto steel frame studs and only peel off the forward-facing liner once Watergate Plus is ready to be installed. When ready, peel off approximately 2m of tape liner at a time and press Watergate Plus firmly onto tape, ensuring it is taut.

Note: The double-sided tape is to temporarily hold the Watergate Plus in place until the batten and/or cladding is installed. The screws used to fix these are the permanent fixings for Watergate Plus.

- Minimum of 150mm lap is required at joins. All vertical laps must be made over studs. Horizontal laps to be laid ship lap style allowing water to be shed to the outer face of Watergate Plus.
- Cover all windows and door openings with Watergate Plus underlay. It is recommended that the Watergate Plus underlay is not cut and prepared for window installation until the arrival of the windows.
- When windows and doors are ready for installation, the Watergate Plus underlay covering the openings should be cut at 45° and folded into the opening and securely fastened. Thermakraft window flashing tapes are recommended as the window flashing system.

Note: In accordance with NZBC Acceptable Solution E2/AS1 and NASH Building Envelope Solutions: 2019 (E2/AS4), wall underlay must be prevented from bulging into the drained cavity. Where stud spacing is greater than 450mm, Thermakraft Stud Strap or Thermostrap run horizontally at 300 centres is an acceptable means of prevention.

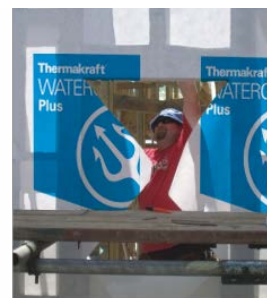
- Once installed, Watergate Plus must not be left exposed to the weather or UV for a maximum of 90 days. Watergate Plus underlays will provide temporary weather protection during construction allowing work to continue.

Internal linings and insulation must not be installed until the exterior cladding is completed.

- Fastenings behind Brick Veneer Cladding must have an equivalent service life to that of Brick Veneer (50 years). Refer to NZBC B2 Durability.
- Repair small damaged areas with any Thermakraft window flashing tape or Thermakraft Premium Joining Tape. Any large areas which require repair may be covered with a second layer of underlay with a lap of 150mm and then taping.
- Watergate Plus underlay must be installed by, or under the guidance of a licensed building practitioner.



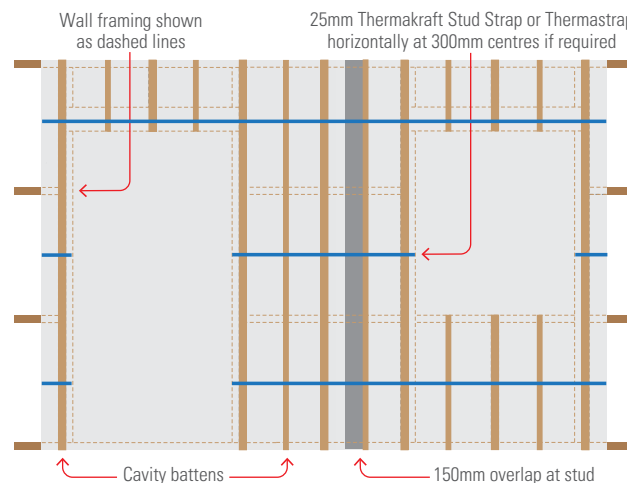
Fix Watergate Plus securely to the frame.



On arrival of doors and windows, cut Watergate at each opening on a 45° angle away from each corner. Pull the Watergate flaps inside and fasten to the inside of frame.

Application Tips

Watergate Plus is unaffected by LOSP or other solvent based treated timber. However, LOSP or other solvent based treated timber must have sufficient time for the solvent to flash off in a well-ventilated area. Recommended minimum 7 days.



Watergate Plus

Premium Synthetic Wall Wrap



Handling and Storage

Watergate Plus underlay must be handled with care to prevent damage such as tearing and roll deformation. Due to the width of the product, care should be taken when installing in windy conditions.

The product must be stored under cover well away from direct moisture, rainfall contact and sunlight (UV). Care should be taken not stack other materials on top of the product.



0800 806 595
www.thermakraft.co.nz

Thermakraft and Ausmesh products are brought to you by Kingspan Insulation NZ Limited.



The recommendations contained in Kingspan's literature are based on good building practice, but are not an exhaustive statement of all relevant information and are subject to any conditions contained in the Warranty. All product dimensions and performance claims are subject to any variation caused by normal manufacturing process and tolerances. Furthermore, as the successful performance of the relevant system depends on numerous factors outside the control of Kingspan (for example quality of workmanship and design), Kingspan shall not be liable for the recommendations in that literature and the performance of the Product, including its suitability for any purpose or ability to satisfy the relevant provisions of the Building Code, regulations and standards. Literature subject to change without notification. Latest documentation can be found online. E&OE.