



Overview:

Fairview Systems introduces Building Information Models (BIM) in Revit software.

The Fairview Systems Revit families are the first 3D families to be offered in the NZ joinery industry and simplify the design and specification process for architects and designers.

Due to the increasing requests for Revit content, we have been working alongside architects to develop detailed Revit families to help ease the design, detailing and modelling process. It gives the architects the opportunity to not only specify but also visualize projects with the Fairview windows and door products.

Features of the models include:

- **Nested details items**
- **Ability to turn on and off items within the model**
- **Over 32 of our standard powder coat colours and anodized finishes.**
- **Optimized detail at the coarse, medium and fine levels.**

Our files have all that you need and links to all other detail items you may require. If you get stuck you can access our technical support team via the link in the properties bar under "identity data". Our models carry all our company's metadata so you can rest assured knowing any information you need, whether its specification information, galleries of our products, or even finding a fabricator it is just a click away. Even with all this we have ensured our file sizes are not huge and will not slow down your design process.

As these models are prepared in house you have the confidence that profiles are sections are technically correct and current

We currently offer two types of models:

- **A Detailed 3D Solution – A complete 3D Model that has nested detail items to help with the detailing process. (Larger file size)**
- **A Simple 3D Solution – A Simple 3D Solution without the nested details. (Minimal file size)**
- **Note: Both model types are contained within each single download file.**

If you can't find the configuration you're looking for or are in need of additional features, feel free to contact our architectural support team as custom make configurations and models can be made to suit the design, the architect, or even the architecture firm.

As this is our 'alpha' release BIM family offering, we appreciate any productive feedback to help us continually improve and update our Revit library.

Features:

This family is hosted by a wall.

This family includes materials.

This family includes complete manufacturer metadata.

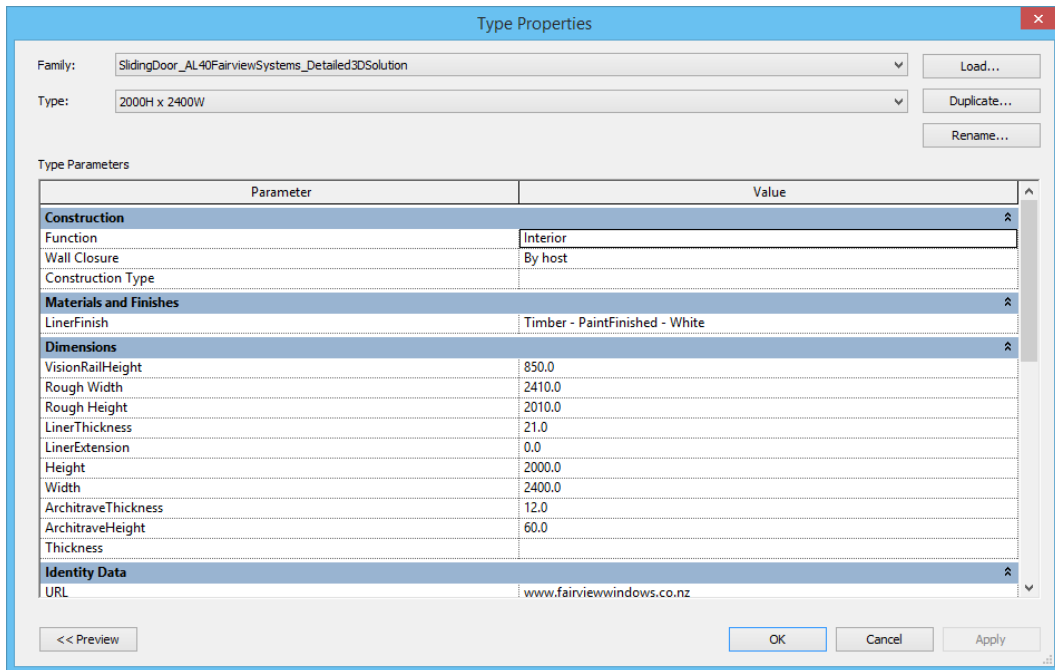
This family contains geometry that is constrained to references.

This family contains views that are 2D ready,

FAQ:

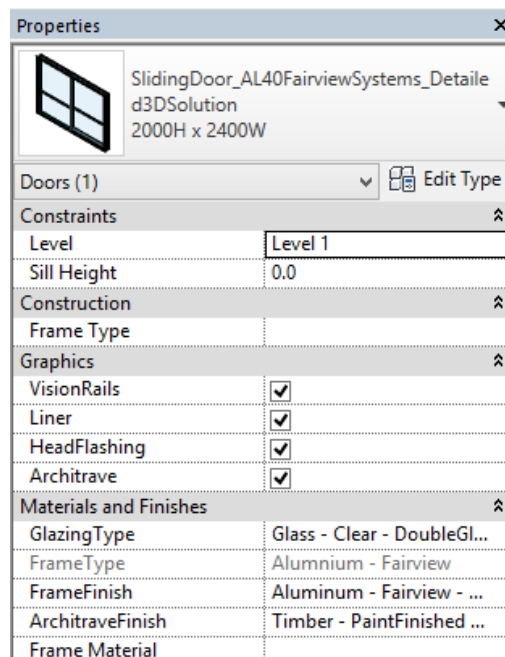
How do I create custom sizes?

We have created our families with the Type Catalogues necessary to represent common sizes. The Types can be altered within the type properties. Use the “height” and “width” parameters to drive the changes in the size, and also update any other parameters that reflect your custom product.



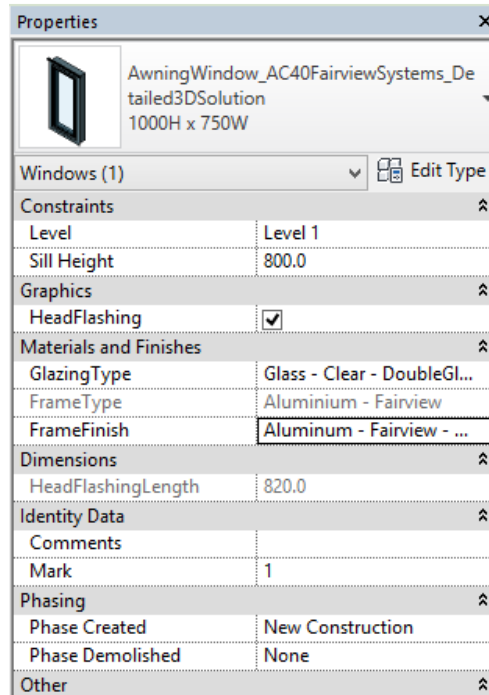
How can I turn on and off vision rail, architraves, liners and head-flashings?

In Project mode simply select the window/door you would like to edit. On the properties bar under “Graphics” you will find the relevant items listed that can be ticked on or off, depending on whether you would like them to show up in your 3D views.



How do I change the finishes?

In Project mode simply select the window/door you would like to edit. On the properties bar under “Materials and Finishes” you will see “Frame finish”, click on this to bring up numerous finishing options.



How can I access the links to your website and specification documents?

In project mode you simply select any window or door, in the properties bar click on “edit type”. This will bring you to the Type properties menu. Under the Identity Data you will find our company information and links to all our online resources, including full installation details (CAD.dwg) for most typical cladding types via ‘Productspec’ There is also a link to our technical support team should you have any questions or issues.

