



Engineering progress
Enhancing lives

REHAU PINC™ Push In. Connect.

PINC LD Overview.



It's REHAU

PINC™ is push-fit technology for faster installation, while also having the high quality, safety and reliability of REHAU.

It has been designed and manufactured to the highest specifications, and is the result of decades of polymer product development.

We understand plumbing is also changing with customers wanting simpler installs, better productivity, more potential to grow profit and opportunities to save time.

The PINC™ product range satisfies these needs by bringing efficiency and ease to any plumbing project. The PINC™ fitting system also complements REHAU's trusted sliding sleeve system - same pipe, different connection technology.

PINC™ works by pushing REHAU standard PE-Xa 16 or 20 mm hot or cold water pipe into a PINC™ connector joint until it clicks – the joint is completely home when the 360° fluorescent UV pink inspection ring is fully visible - **simplicity and trust.**

PINC™ is also dark place friendly - simply shine a UV torch at the pink inspection ring to see a full circle view of the completed joint - **safety.**

It's also tool free, apart from a trusty pipe cutter - **efficiency.**



Fitting Components



1. Fitting body

Made of temperature and chemical resistant engineered polymer, respectively REHAU's signature highly dezincification resistant brass.

2. Seal rings

2x EPDM seal rings for extra security and enhanced leak tightness.

3. Clear housing

Glass fibre reinforced transparent Grilamid. See what's going on inside from all directions.

4. Inner collet

Tough thermo-plastic polymer that provides both stability and strength to the fitting.

5. Guide ring

Dual functionality and the heart of the design - ensures smooth pipe insertion and provides visual confirmation of completed connection.

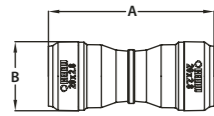
6. Grab ring

Stainless Steel toothed ring capable of holding up to 2.5 tonnes pull-out force.

7. End cap

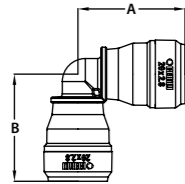
Glass fibre reinforced black Grilamid. Securely holds all components in place.

REHAU PINC™ Product Range



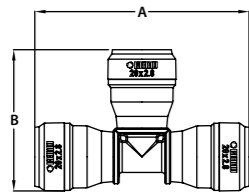
PINC Straight Coupling

REHAU Article Code	Size	A mm	B mm
442922 - 001	PINC NO.1 COUPLING 16-16	70	27
442923 - 001	PINC NO.1 COUPLING 20-20	76	32
442924 - 001	PINC NO.1 COUPLING 20-16	73	32



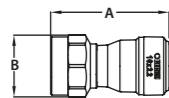
PINC Elbow 90

REHAU Article Code	Size	A mm	B mm
442925 - 001	PINC NO.12 ELBOW 90°16-16	45	45
442926 - 001	PINC NO.12 ELBOW 90°20-20	50	50



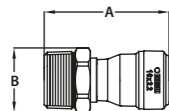
PINC Tee Piece

REHAU Article Code	Size	A mm	B mm
442917 - 001	PINC NO.24 T-PIECE 16-16-16	89	58
442918 - 001	PINC NO.24 T-PIECE 20-20-20	100	66
442919 - 001	PINC NO.25 T-PIECE 20-16-20	92	63
442920 - 001	PINC NO.26 T-PIECE 20-20-16	95	63
442921 - 001	PINC NO.27 T-PIECE 20-16-16	97	63



PINC Straight Connector Female

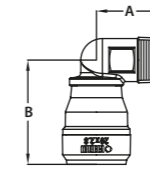
REHAU Article Code	Size	A mm	B mm
442932 - 001	PINC NO.2 STR CONN FI16-RP 1/2"	55	29
442933 - 001	PINC NO.2 STR CONN FI20-RP 3/4"	60	36



PINC Straight Connector Male

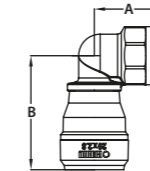
REHAU Article Code	Size	A mm	B mm
442928 - 001	PINC NO.3 STR CONN MI16-R 1/2"	57	27
442929 - 001	PINC NO.3 STR CONN MI16-R 3/4"	58	30
442930 - 001	PINC NO.3 STR CONN MI20-R 1/2"	60	30
442931 - 001	PINC NO.3 STR CONN MI20-R 3/4"	61	30

REHAU PINC™ Product Range



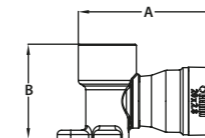
PINC Elbow Male Thread

REHAU Article Code	Size	A mm	B mm
442934 - 001	PINC NO.13 ELBOW MI16 - R 1/2"	30	46
442935 - 001	PINC NO.13 ELBOW MI20 - R 1/2"	31	49
442936 - 001	PINC NO.13 ELBOW MI20 - R 3/4"	33	51



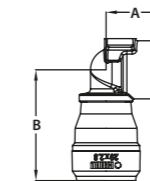
PINC Elbow Female Thread

REHAU Article Code	Size	A mm	B mm
442937 - 001	PINC NO.14 ELBOW FI16 - RP 1/2"	29	50
442938 - 001	PINC NO.14 ELBOW FI20 - RP 1/2"	32	53
442939 - 001	PINC NO.14 ELBOW FI20 - RP 3/4"	33	57



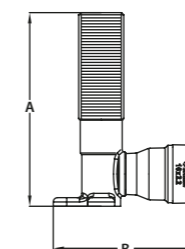
PINC Elbow Female Wingback

REHAU Article Code	Size	A mm	B mm
442945 - 001	PINC NO.15 BP ELB FI16-RP 1/2"	62	44
442946 - 001	PINC NO.15 BP ELB FI16-RP 3/4"	69	44
442947 - 001	PINC NO.15 BP ELB FI20-RP 1/2"	65	44
442948 - 001	PINC NO.15 BP ELB FI20-RP 3/4"	72	44



PINC Elbow Female Top Wingback

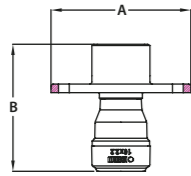
REHAU Article Code	Size	A mm	B mm
442949 - 001	PINC NO.15 BP EWB FI16-RP 1/2"	27	49
442950 - 001	PINC NO.15 BP EWB FI20-RP 1/2"	27	52
442951 - 001	PINC NO.15 BP EWB FI20-RP 3/4"	27	57



PINC Elbow Male Parallel Thread

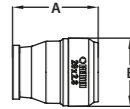
REHAU Article Code	Size	A mm	B mm
442942 - 001	PINC NO.19 BP ELB MI16-G1/2" 65	65	67
442943 - 001	PINC NO.19 BP ELB MI16-G1/2" 90	90	67
442944 - 001	PINC NO.19 BP ELB MI20-G1/2" 95	95	70

REHAU PINC™ Product Range



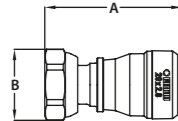
PINC Hose Plate

REHAU Article Code	Size	A mm	B mm
442958 - 001	PINC HOSE PLATE 16 - Rp 1/2"	65	59



PINC Stopper

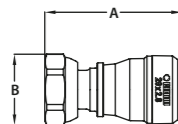
REHAU Article Code	Size	A mm	B mm
442940 - 001	PINC NO.61 STOPPER 16	37	27
442941 - 001	PINC NO.61 STOPPER 20	40	32



PINC Straight Tap Connector With Gasket

REHAU Article Code	Size	A mm	B mm
442959 - 001	PINC NO.62 S TAP WGASK16-G1/2"	61	29
442960 - 001	PINC NO.62 S TAP WGASK20-G3/4"	64	33

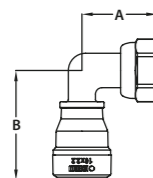
Integrated gasket seal, flat



PINC Straight Tap Connector

REHAU Article Code	Size	A mm	B mm
442954 - 001	PINC NO.62 S TAP CONN16-G 1/2"	64	29
442955 - 001	PINC NO.62 S TAP CONN20-G 3/4"	68	33

Integrated flexible seal, tapered

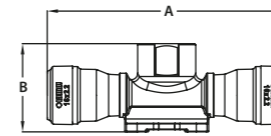


PINC Bent Tap Connector

REHAU Article Code	Size	A mm	B mm
442952 - 001	PINC NO.63 B TAP CONN16-G 1/2"	35	51
442953 - 001	PINC NO.63 B TAP CONN20-G 3/4"	37	56

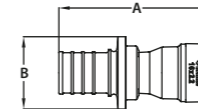
Integrated flexible seal, tapered

REHAU PINC™ Product Range



PINC Tee Piece Wingback

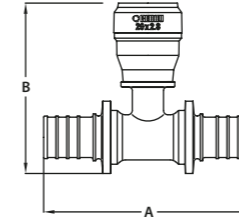
REHAU Article Code	Size	A mm	B mm
442927 - 001	PINC NO.30 T-PIECE 16-RP1/2"-16	111	41



PINC Transition Straight Coupling

REHAU Article Code	Size	A mm	B mm
431936 - 001	PINC NO.1 TRS COUPLING16-25RT	71	34
431937 - 001	PINC NO.1 TRS COUPLING 20-25RT	74	34

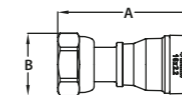
Transition to RAUTITAN compression sleeve system



PINC Transition Tee Piece

REHAU Article Code	Size	A mm	B mm
431935 - 001	PINC TRAN T-PIECE 25RT-20-25RT	97	79

Transition to RAUTITAN compression sleeve system



PINC Union Connector NZ

REHAU Article Code	Size	A mm	B mm
442956 - 001	PINC UNION CONN 16-DN15 NZ	67	27
442957 - 001	PINC UNION CONN 20-DN20 NZ	70	33

Transition to NZ Copper pipe - NZS 3501

PUSH PUSH
PUSH PUSH
PUSH PUSH
PUSH PUSH

REHAU PINC™

Do what really matters

REHAU Ltd

12 Allens Road, East Tamaki, Auckland 2013, New Zealand

Tel: +64 9 272 2264 | Fax: +64 9 272 2265

Email: sales.nz@rehau.com

www.rehau.co.nz

