

Electrical Solutions Guide

Your complete guide to electrical and energy management in the home



by Schneider Electric

This informative and easy to understand guide from PDL by Schneider Electric is designed to assist you in planning the electrical requirements for your home.





Table of contents

- 4 Electrical product selection
- 6 Match your style
- 16 Energy efficiency options
- 18 Electrical safety
- 20 The smart home
- 28 Electrical made easy



Match your style






It is often assumed that there are no options outside the standard white plastic switch.

Nothing could be further from the truth!





We offer styles and finishes so you can accessorise with you homes decor

PRODUCT	SWITCH & SOCKET	COLOUR OPTION		
<p>Saturn Elegant glass look</p>		<input type="radio"/> Ocean Mist	<input type="radio"/> Pure White	
<p>Saturn Horizon Sophisticated textures</p>		<input type="radio"/> Horizon Silver	<input checked="" type="radio"/> Horizon Black	
<p>Saturn ZEN The beauty of simplicity</p>	<p>New & coming mid-2015</p>		<input type="radio"/> Matt White	<input checked="" type="radio"/> Matt Black
<p>Strato 800 Series™ Contemporary style</p>		<input type="radio"/> White	<input type="radio"/> Brushed Aluminium	
		<input checked="" type="radio"/> Black	<ul style="list-style-type: none"> ↳ Black surround ↳ White surround 	
		<p>Base module colour options</p>		
		<input type="radio"/> White	<input checked="" type="radio"/> Black	
<p>Modena 800 Series™ European curves</p>		<input type="radio"/> White	<input checked="" type="radio"/> Red	
		<input checked="" type="radio"/> Black	<input type="radio"/> Champagne	
		<input type="radio"/> Charcoal	<input type="radio"/> Gunmetal	
		<input checked="" type="radio"/> Blue	<input type="radio"/> Platinum	
		<input type="radio"/> Chrome		
		<p>Base module colour options</p>		
		<input type="radio"/> White	<input checked="" type="radio"/> Black	

PRODUCT	SWITCH AND SOCKET	COLOUR OPTION
<p>Metal Plate Series Sleek and stylish metal</p>		<p>● Solid Brass ● Stainless Steel</p> <hr/> <p>Base module colour options</p> <p>○ White ● Black</p>
<p>Slimline® Series Classic sliced extra thin</p>		<p>○ White ● Brushed Brass ● Black ● Chrome Shadow ○ Brushed Aluminium ● Gold ● Chrome</p> <hr/> <p>Base module colour options</p> <p>○ White ● Chrome Shadow ● Black</p>
<p>600 Series Design excellence</p>		<p>○ White ● Brushed Bronze ● Black ● Stainless Steel ○ Brushed Aluminium</p> <hr/> <p>Base module colour options</p> <p>○ White ● Black</p>
<p>Classic C2000 Series Traditional looks</p>		<p>○ White ● Black</p> <hr/> <p>Base module colour options</p> <p>○ White ● Black</p>



When selecting your socket outlets, try to be consistent with their orientation (ie. vertical or horizontal) throughout your home

Utilising different colours and plate finishes can change the whole look of your home's electrical fitout

MATCH YOUR STYLE



Saturn

Elegant glass look

Colour options



Pure White



Ocean Mist



- Ocean Mist
- Pure White



NEW
USB charging





Saturn Horizon

Sophisticated textures

Colour options



- Horizon Silver
- Horizon Black



Horizon Silver

Horizon Black

MATCH YOUR STYLE



Saturn ZEN

The beauty of simplicity

Colour options



Matt White



Matt Black

○ Matt White

● Matt Black



USB charging
with shelf





Strato 800 Series™
Contemporary style

Colour options



NEW - USB charging

- White
- Black
- Brushed Aluminium
 - ↳ Black surround
 - ↳ White surround



IMPRESS push-button
Brushed Aluminium
↳ Black surround



**Base module
Colour options**

- White
- Black

MATCH YOUR STYLE



Modena 800 Series™

European curves

Colour options



White



Blue



Chrome



IMPRESS
push-button



Red



Gunmetal



Champagne



Black

- White
- Black
- Charcoal
- Blue
- Chrome
- Red
- Champagne
- Gunmetal
- Platinum

**Base module
Colour options**

- White
- Black



Metal Plate Series

Sleek and stylish metal

Colour options

- Solid Brass
- Stainless Steel



Stainless Steel



Solid Brass

Base module Colour options

- White
- Black



MATCH YOUR STYLE



Slimline® Series
Classic sliced extra thin

Colour options



Chrome Shadow



Brushed Aluminium



Chrome



Black



Gold



White



White



IMPRESS
push-button

- White
- Black
- Brushed Aluminium
- Brushed Brass
- Chrome
- Chrome Shadow
- Gold

**Base module
Colour options**

- White
- Black
- Chrome Shadow



600 Series

Design excellence



White



NEW - USB charging



Stainless Steel



Brushed Bronze



IMPRESS
push-button
Stainless Steel



Colour options

- White
- Black
- Brushed Aluminium
- Brushed Bronze
- Stainless Steel

**Base module
Colour options**

- White
- Black

MATCH YOUR STYLE



Classic C2000 Series

Traditional looks

Colour options



White



Black

- White
- Black



IMPRESS
push-button

**Base module
Colour options**

- White
- Black

Latest solutions & great ideas

Continual innovation is a driving factor within Schneider Electric, with many great new products and solutions arriving from this.



A USB charger designed to fit multiple plate styles and finishes

For handy hints in each room check-out the fold-out checklist in the back of this guide.

USB charging – simplify digital living

Convenience is the major factor behind the development of New Zealand's most universal USB charger. We designed a charging module that fits into a multitude of different plate styles and finishes in our PDL and Clipsal ranges. It can be combined with a conventional socket, or you can fit up to three in a standard plate.

We've designed a charger using smart technology that delivers an optimum amount of

charge with a minimum amount of current. This delivers extremely low stand-by power when not in use (<0.07W), 5 star energy ratings for energy efficiency, and efficient charging times.

If you are building or renovating it is essential you consider USB charging in your wall plates or socket outlets. They are perfect for: kitchen & living room, beside the bed, the study or home office, and more.



Pop-up power outlets

Say goodbye to messy cords and no access to power

Great for bench tops, our convenient pop-up power outlet's flush, compact design, allows power points to be hidden when not in use.

- > Incorporate a twin auto-switched socket outlet
- > Safe power around the home and office
- > Perfect for kitchens, pantries, offices and workshops



White



Stainless steel



Black

Energy efficiency options



Homes

+



Smart products

=



Lower running costs



Transform your standard light switch to be auto sensing

Set and forget... put timers on towel rails and fans

- > **Monitor** and reduce power consumption
- > **Simple** energy-efficient products make it easy!
- > Make the most of your energy and **save money** on electrical bills without compromising your lifestyle or the look of your home

Timer switches

Using a timer to turn the towel rail on for two hours per day reduces the consumption rate from having it running continuously.



Potential savings
\$106 per year

Light dimmers

Using a dimmer for just 50% of the time to reduce illumination to half brightness can save you money.



Potential savings
\$53 per year

Indoor sensors

An indoor sensor turns your lights on only when required. Even when triggered throughout the night, you can save by not having them on continuously.



Potential savings
\$204 per year

Sunset switches

Sunset switches control lighting at dusk and automatically adjust to daylight saving and gradual seasonal changes.



Potential savings
\$48 per year

Energy monitors

Monitor your electricity usage on a bench top display; set and track targets.



Monitor your energy use &
save up to 10% of your energy bill

Solar lighting

A solar lighting system that is efficient, eco friendly, robust and portable.



Ideal for camping!

Savings examples...

All savings are estimates only and are based on an electricity tariff rate of 22c per kilowatt hour. Actual energy and cost savings will depend on individual usage patterns and local conditions.

Electrical safety

Protect your most valuable assets



Surge protection can be installed to protect your valuable electronic equipment

Hard wired smoke alarms can be interconnected

Three unique aspects everyone must consider

- People protection
- Equipment protection
- Peace of mind

Refer to colours below to see where they can benefit

Safety products range retail

 ● ● Smoke alarms Hard wired - interconnectable	 ● ● Waterproof switches Wet areas	 ● ● Surge protection Electronic equipment	 ● ● Shuttered sockets Safety barrier for toddlers
 ● ● In- & out-door sensors Stairway, hallway, path & driveway safety at night	 ● ● Emergency lighting Power outage lighting	 ● ● ● Thermal trip sockets Overheating protection for high use areas	 ● ● Outdoor ranges Weather protected
 ● ● Safety switches Residual Current Device (RCD)	 ● ● ●* Safety sockets RCD – protection against electrocution	 ● ● ● Switchboards Stylish and safe containment of your distribution and protection devices	 ● ● ● Circuit protection A complete range of distribution and protection devices

* Some RCDs are designed for equipment protection

The smart home

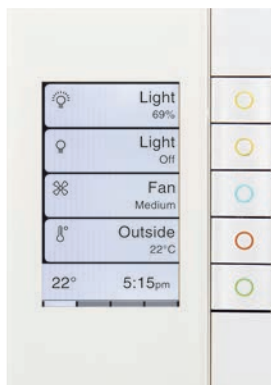
- > Comfort
- > Convenience
- > Control
- > Customisation
- > Energy efficiency





Make your home a smart home

From network connections to ensure seamless use of technology in your home, to a fully automated smart home - the sky is the limit.



Wiser home control

Wiser Home Control gives you the options to customise the automation in your home.



Pre-programmed pack

A set option which suits the standard new home, to automate lighting control or home audio.



Home audio

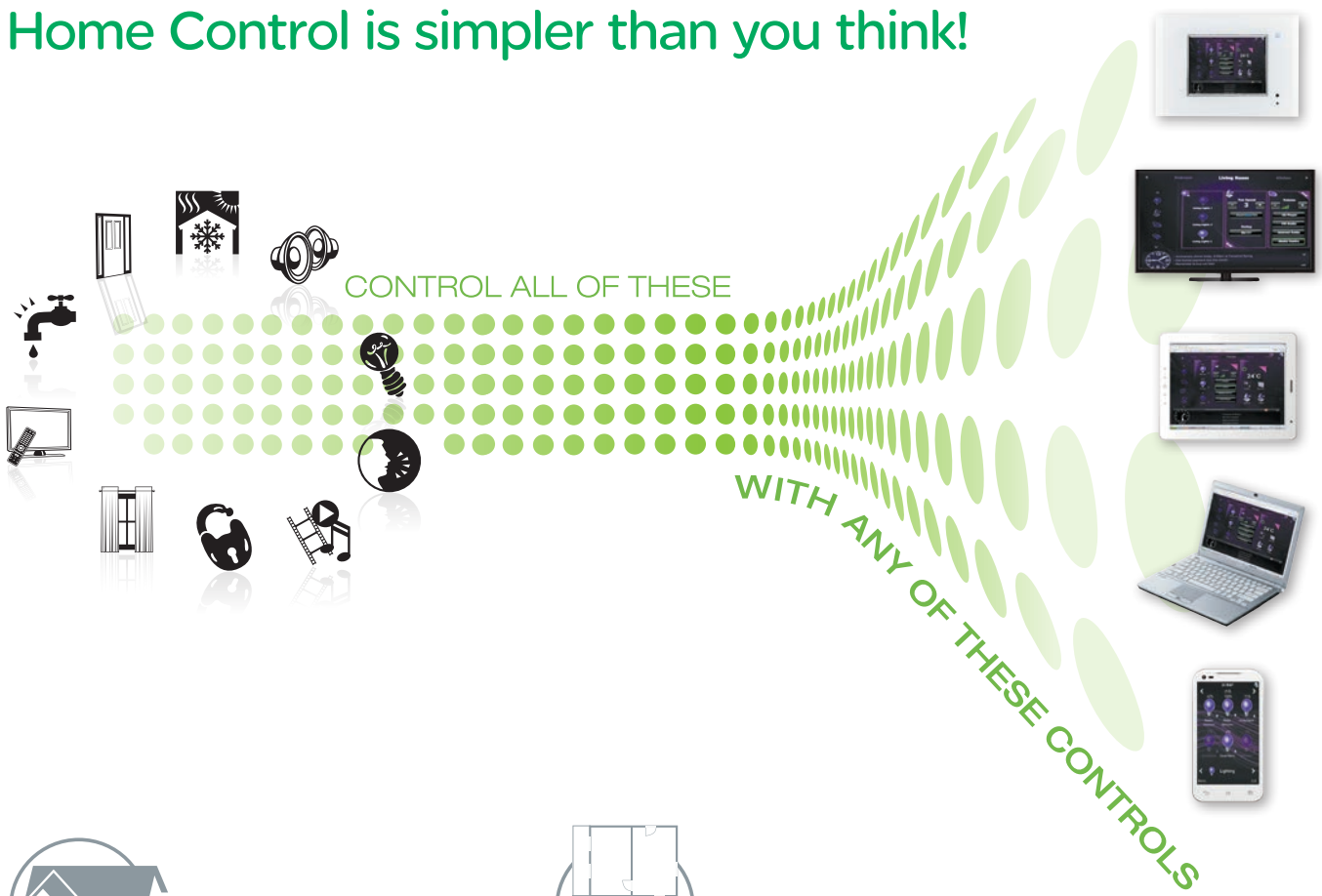
A cabling system to distribute your favourite music to every room in your home.



Home connectivity

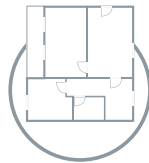
A structured cabling system which allows all your devices to be linked to one central hub.

Home Control is simpler than you think!



What do you want to control?

You can control just lighting, or lighting and multi-room audio. Or, you can have your whole home automated to incorporate air conditioning, energy monitoring, blinds and curtains, security, surveillance and more; with one intelligent managed system.



What areas do you want to control?

What areas of your home you want to control is just as important as the elements you wish to control. A wired or wireless Wisier Home Control system can be installed to control one or more elements in selected rooms or throughout your entire home.



What level of functionality do you desire?

The Wisier Home Control system is designed with maximum flexibility and functionality in mind. Wired systems are more suited to new homes or renovations, where cabling can be easily installed into the wall cavities during the building process.



What is your budget?

A benefit of the Wisier Home Control system is that the control functions can be easily modified or added, to suit your requirements as they change. The cost is determined by the areas and functions you wish to control, as well as how you want to control them.

Home automation pre-packed!

Schneider Electric has developed two pre-programmed packs to suit a standard new home. As the pack is already programmed by an Approved Installer, the packs are ready to be installed in your home by your registered electrician. With an option for lighting control and for audio, you can easily add automation to your home.

Wiser pre-programmed pack

The Wiser pre-programmed pack offers an easy to use lighting control system for your home with set functions already programmed.

With everything you need to control a standard home, the Wiser pre-programmed pack is the simple solution to automate the lighting in your homes main areas.

The Wiser pre-programmed pack includes all-on and all-off pre set functions, and puts the power in your hands to set your own lighting scenes – party, theatre, - the choice is yours!

Wiser pre-programmed Audio Kit

The Wiser pre-programmed Audio Kit offers an easy to use lighting control system for your home with set functions already programmed, as well as audio equipment including an amplifier to integrate audio into your home.

Create the perfect entertaining atmosphere with the Wiser pre-programmed audio kit!

Possibilities open up...

Wiser Home Control

Integrate your electrical, multi-media and telecommunications technologies into one single user-friendly solution.

It's not just being smart, it's running your home with wisdom.

Wiser Home Control provides seamless control of music, home theatre, lighting, air conditioning, sprinkler systems, curtains and shutters, security systems... you name it.

Usable anytime, anywhere, even when you are away – there is no wiser way to enjoy 24/7 connectivity, comfort and convenience.

Get total reliability all the time, take control by simply being wiser!

To discuss a customised home automation solution designed with your needs in mind, contact a Schneider Electric Wiser Approved Installer.

With Wiser Home Control you can use your smart phone or tablet to monitor that all is well at home. Remote controlling your home is no longer science fiction. You can even enhance your sense of safety by remote video monitoring of your home via your smart phone or office PC.



... when you are fully connected



Bringing sound to your home

StarServe Home Audio



StarServe Audio is a cabling system that enables the user to distribute their favourite music to every room in the home with the flexibility of adding more music sources to every location.

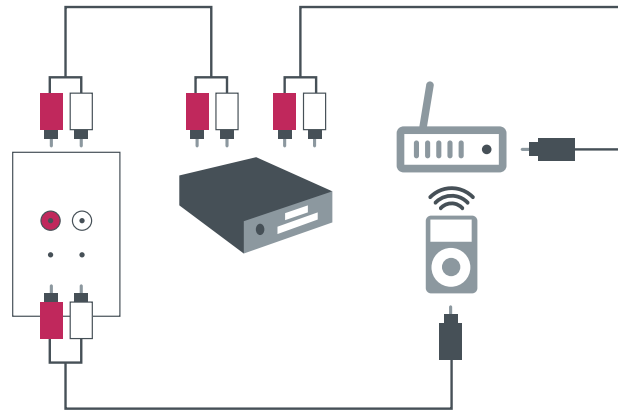
It's simple, affordable and easy to install, but best of all it's easy to use.

Additionally, the Bluetooth receiver module enables the simple wireless input of tunes from all compatible devices in the home environment.

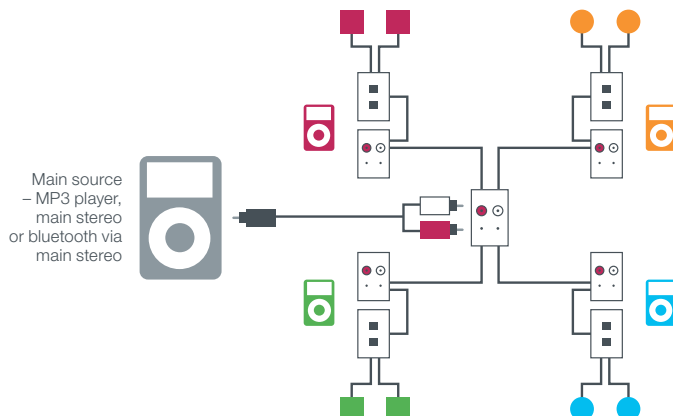
Typical applications:

- > Outdoor entertaining
- > Kitchen/dining room
- > Perfect for kitchens, pantries, offices and workshops
- > Bedrooms
- > Rumpus room/games room
- > Garage/home gym

Audio Distribution with Bluetooth

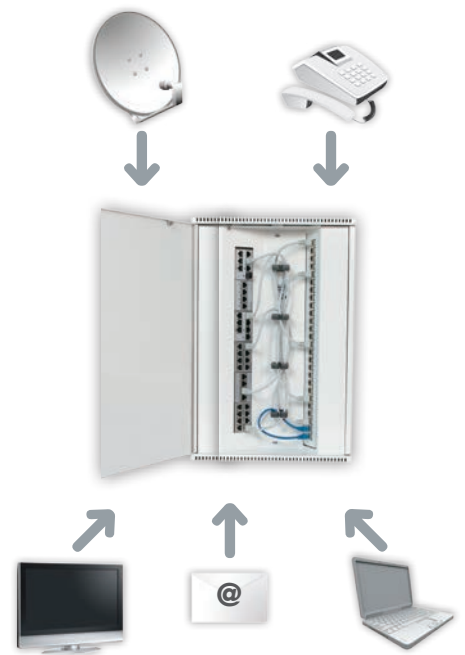


Multi room & multi source flexibility - up to 4 zones



Connect your home to the digital world

Stylish connectivity



The rapid growth in use of smart phones, tablets, portable music players, and other digital devices has changed the way we use the conventional power socket.

Staying connected is an ever increasing priority, and the use of our connectivity range helps to control this, as well simplify the set-up in each room.

If included at the planning stage this group of what are effectively standard day-to-day connectors can add value and convenience to your lifestyle.

Thanks to a clever modular design most of these connection devices can go across a wide variety of plate ranges and styles to suit your needs.

Stylish and convenient

A number of these connectors are required in high traffic and very visual areas, and with that it is possible to select a range to suit your style.

- > USB charging outlets in the living room, kitchen, or beside the bed
- > Audio input modules for connecting MP3 players

Simple and organised

Tidy up the cables and connections in each room by installing TV aerial sockets, data sockets, speaker sockets, HDMI sockets or whatever is required neatly behind the entertainment unit, and have the cables behind the wall



Electrical made easy

- > What to think about
- > How to make it happen



What to think about:

- 1 Choose a range to suit your style
- 2 Maximise simple energy-saving devices
- 3 Safety & protection
- 4 Connect your home making it smarter



Specify the requirements you want with:

- > Your architect or designer or interior decorator and/or;
- > Your building company who will engage the electrician and/or;
- > Directly with the electrician.

How to make it happen will vary depending whether you are engaging with a design professional, engaging with a building company, or project managing yourself.

> The choice is yours



Electrical solutions checklist

Use this chart to select what you want and provide to your designer or installer



Prefer planning your new home or renovation on your tablet? Download our interactive residential solutions guide.



The Residential Electrical Solutions App is an interactive download providing a complete guide to electrical and energy management in the home.

Features:

- > Simple messaging and tips
- > Optional voice-over buttons to talk you through it
- > Four elements: Matching Your Style, Energy Efficiency, Safety, The Smart Home
- > Video links, and hidden sections for those that want more detail
- > Bringing it together with demonstrating options against generic house plans

Designed and built for new users & building professionals alike. It provides a simple framework allowing anyone to understand what should be considered. First time users can be inspired to make informed decisions, then contact their qualified expert to take the next steps.

For building professionals it can be used as a display tool, where one or two aspects can be quickly examined and decided on, or it can be a step-by-step guide, it is flexible and easy to navigate.

The Residential Electrical Solutions app provides a complete guide to electrical and energy management in the home.

Find out more at
<http://myhome.schneider-electric.com>
Download the app for your iPad or Android device here:
Or search 'Home Solutions' in the Apple App Store
or Google Play Store.



ROOM BY ROOM HINTS AND NOTES

Kitchen

- Motion sensors for pantry
 - Plate style to match appliances
 - Four-way socket outlets
 - Pop-up socket for bench or pantry
-
-

Bathroom/En-suite

- Timer on towel rail and fans
 - Sensors for lighting
 - Waterproof switches in wet areas
-
-

Living room

- Dimmers to set the scene
 - AV connections and surge protection to future proof and protect equipment
 - USB charging for phones, tablets, and more
-
-

Dining room

- Ceiling speakers for background music
 - Connections for phone, PC, TV, USB charging
 - Mood lighting
-
-

Bedroom

- Light, power, USB, phone connections near the bed
 - Sensors for walk-in-robos and kids rooms
 - 2-way switching to control lighting from different locations
-
-

Office/Study

- Plan where data, HDMI, USB outlets should go
 - Surge protected outlets for electronics
 - Plan for future data, TV, audio
-
-

Hallway/Stairway

- Sensors for main lighting
 - Sensors on a timer night circuit for low level lighting
 - Back-lit switches to locate in dark
-
-

Outside

- Weatherproof outdoor socket outlets should be considered for each side
 - Sunset switches and motion sensors for security lighting
-
-

Laundry

- Extra power outlets for iron
 - Waterproof switches in wet areas
 - RCD sockets for retrofit
-
-

Garage/Workshop

- Power sockets for door opener, fridge or freezer
 - Four-way socket outlets for work area
 - RCD protected for electric shock
-
-



ELECTRICAL SOLUTIONS CHECKLIST

MATCH YOUR STYLE

Saturn

List your colour/finish:



Saturn Horizon

List your colour/finish:



Saturn ZEN

List your colour/finish:

New & coming mid-2015



Strato 800 Series™

List your colour/finish:



Modena 800 Series™

List your colour/finish:



Metal Plate Series

List your colour/finish:



Slimline® Series

List your colour/finish:



600 Series

List your colour/finish:



Classic C2000 Series

List your colour/finish:



MATCH YOUR STYLE

If you desire to mix and match by room

Kitchen _____

Living _____

Bathroom _____

Dining _____

Bedrooms _____

Office/Study _____

Hallway/Stairs _____

Laundry _____

Garage/workshop _____

Other _____

ENERGY EFFICIENCY

Timer switch

Where:



Light dimmer

Where:



Indoor sensor

Where:



Sunset switch

Where:



Energy monitor



ELECTRICAL SOLUTIONS CHECKLIST

ELECTRICAL SAFETY

Surge protection



In- & out-door sensor



Emergency lighting



Outdoor range



Smoke alarm



Waterproof switch



Safety switch



Safety socket



Thermal trip socket



THE SMART HOME

Wiser home control

Where:

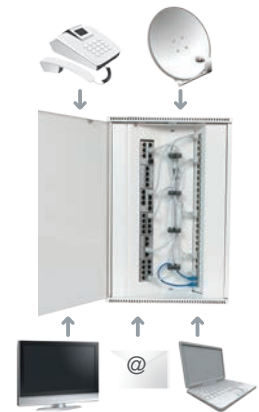


Multi room audio

Where:



Home network



Stylish connectivity

Where:



Make the most of your energy

by Schneider Electric



CUSTOMER
CARE CENTRE
0800 652 999

WEBSITE
www.schneider-electric.co.nz

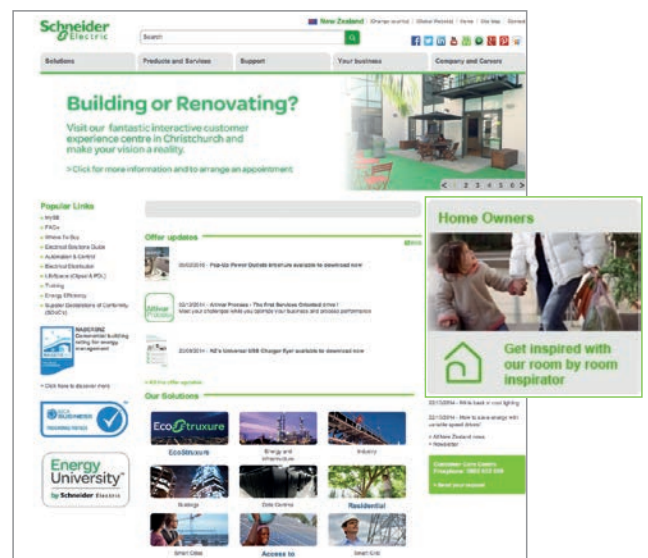
Or discuss with your electrical
contractor

PDL by Schneider Electric Websites

Get inspiration for your new home or renovation project

Visit www.schneider-electric.com/nz

Link to our home owners portal from the home page of the
Schneider Electric New Zealand website



Schneider Electric products are available through electrical wholesalers New Zealand wide.

© 2015 Schneider Electric. As standards, specifications and designs change from time to time, always ask for confirmation of the information given in this publication.

Schneider Electric (NZ) Ltd.

38 Business Parade South, East Tamaki, Manukau 2013
PO Box 259370, Botany, Manukau 2163

www.schneider-electric.com

Tel: +64 9 829 0490
Fax: +64 9 829 0491
Customer Care: 0800 652 999
Email: sales@nz.schneider-electric.com



by Schneider Electric