



**POTTER**  
INTERIOR SYSTEMS

# HERADESIGN

## ACOUSTIC WOOD WOOL PANELS

PRODUCT BROCHURE

**Heradesign**  
Acoustic Ceilings



# HERADESIGN®

## CEILING RAFTS

### FINE



### CEILING BAFFLES



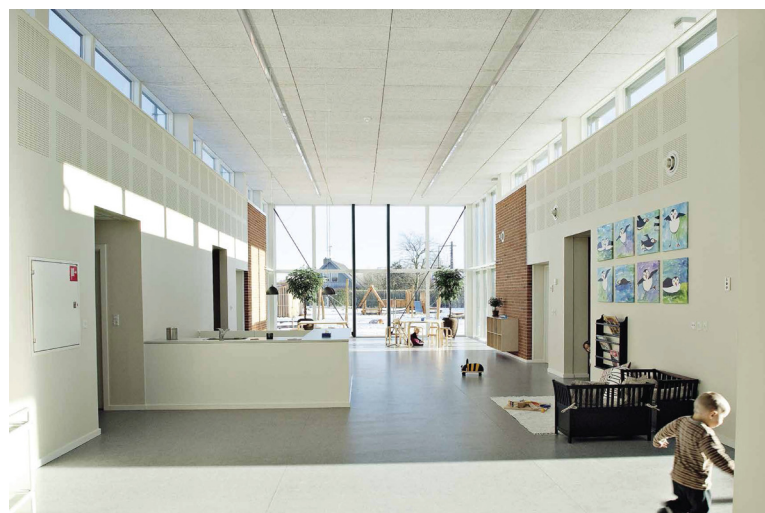
### SUSPENDED CEILING

### WALL MOUNTED

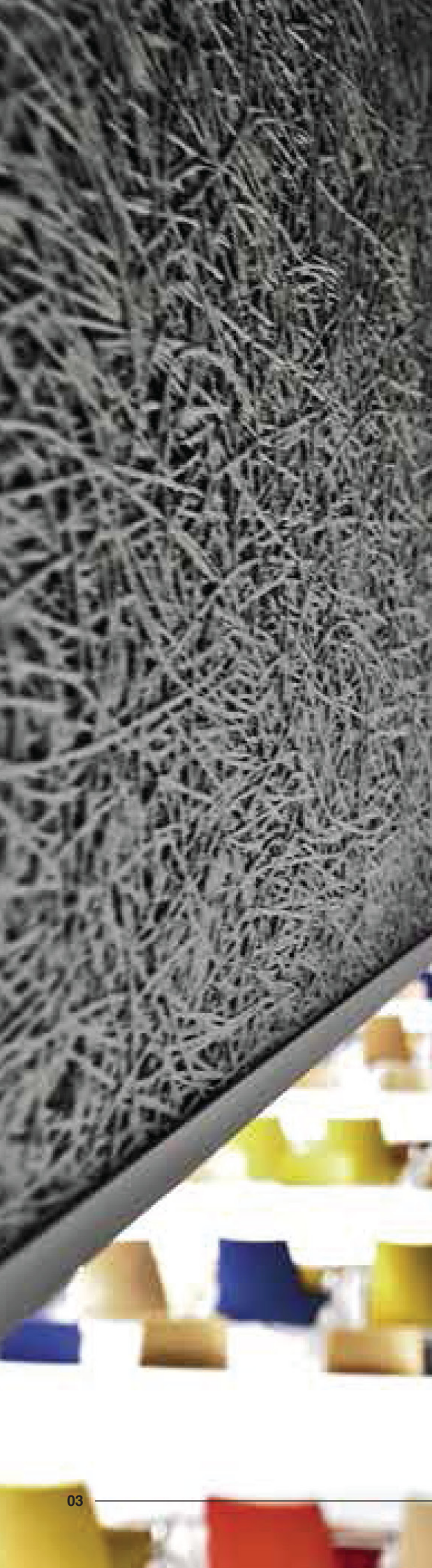
Sustainable acoustic solutions for feel-good rooms.



**DIRECT FIXED**



**SUPER FINE**



---

## SUSTAINABLE. FUNCTIONAL.

Wood, water and magnesite are the principal components of Heradesign® acoustic panels – so they have a completely neutral biological footprint. Heradesign®'s magnesite bonded wood wool panel is a natural product and so ideal for modern lifestyles.

Heradesign® acoustic panels can last more than 80 years in buildings. should it one day be necessary: magnesite bonded wood wool panels can be disposed of easily or recycled.

---

## IN THE GREEN ZONE

By using high-quality raw materials and innovative production technologies, Heradesign® wood wool acoustic panels offer a multitude of design possibilities and applications.

Thanks to their outstanding sound absorption, as well as the use of sustainable materials and technologies, the Heradesign® acoustic solutions make a major contribution to the improvement of the ambience of a room. They increase well-being and, as a result, improve concentration, efficiency and performance.

Heradesign® acoustic solutions are ecologically sound and completely harmless as regards building biology. acoustics and design with a clear, "green conscience".



## OPEN + SMOOTH SURFACE TEXTURE

Only with the technologies and quality standards developed by Heradesign® is it possible to create open, smooth and lightweight surface textures with a simultaneously low quantity of binding agents. This unique structure gives the panels an exquisite and exclusive character and means they can be used in high-quality interior applications.



## HIGH STRENGTH IMPACT RESISTANCE

Crash test with 90 km/h – Heradesign® acoustic panels pass the ball-impact test to DIN 18032 and EN 13964 with flying colours. This is also a result of using magnesite as a binding agent, which guarantees both durable fibre elasticity and solidity.



## EDGE DESIGNS

The production technology and binding agent make exact and high-quality edge designs compatible with almost all ceiling systems and profiles on the market.



## LONG LIFESPAN

Suitable for indoor conditions with relative air humidity of up to 90%. Magnesite protects the wood cells against ageing and fungal attack.



## SOUND ABSORPTION

As decorative applications in wall and ceiling constructions, Heradesign® acoustic panels can reach sound absorption values of up to  $\alpha_w = 1.0$ .



## HUMIDITY + CLIMATE REGULATION

Magnesite is recognised as a hygroscopic and biologically sound binding agent. This means that in addition to their acoustic and decorative properties, Heradesign® acoustic panels also regulate room humidity and climate.



## FIRE RESISTANCE

Heradesign® acoustic panels are manufactured in accordance with quality systems certified as complying to BRANZ test ISO 5660 - Group 1-S.



## LOW SHRINKAGE

Heradesign® acoustic panels are delivered with optimally balanced moisture content and will therefore shrink only 1 mm after installation. As a result, ceiling joints remain practically invisible.



# HERADESIGN®

## ACOUSTIC SOLUTIONS

### PRODUCT OPTIONS

Heradesign® panels are available in both fine and superfine, in the following dimensions:

|                  |                |
|------------------|----------------|
| <b>Thickness</b> | 15mm + 25mm    |
| <b>Length</b>    | 600mm + 1200mm |
| <b>Width</b>     | 600mm          |

The typical, stable surface structure of the wood wool panels is perfectly suitable for creative design and colouring. An almost unlimited range of colours is available - almost every colour from popular colour systems, such as Resene and Dulux can be chosen.

#### EDGE TYPE

Timber batten/furring channel with direct fixing, A clips or suspended ceiling  
AK-01 5mm beveled edge on all sides. Wide furring channel or timber batten

Exposed grid system using tee bars  
SK-04 Straight edge on all sides. Exposed grid system

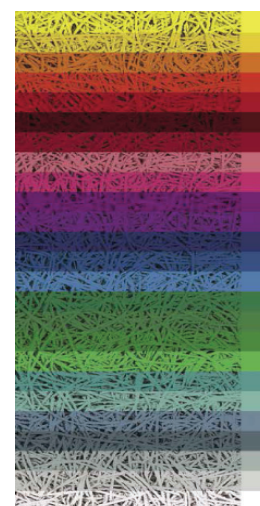


### FINISHING

Heradesign® is supplied in 'natural' colour, meaning the colour variations of the wood wool have been evened out by using a mineral paint based on potassium silicate. Mineral paints have very good durability and should be considered if additional painting of Heradesign® is desired. Standard acrylic paints may also be used to change the colour of Heradesign®.

- » Follow paint manufacturer's instructions
- » Apply paint using an airless paint sprayer
- » Apply at least two coats
- » Apply each coat of paint using different angles so the paint penetrates into all surface features
- » Apply only enough paint to colour the panel, too much paint could detrimentally affect the acoustic performance and could result in excessive moisture and cause panels to warp and swell
- » As a guide, use 0.2 to 0.3 litres per m2 per coat for both Heradesign® fine and superfine
- » Use a mould resistant, outdoor quality paint where humidity is expected to be above 80% such as garages, train stations, or other covered outdoor areas.

For further installation instructions, see our installation guide.



Heradesign® offers an infinite variety of acoustic solutions. Whether they are used for ceilings or walls, all over the room or focussed on a specific area, or whether you prefer a neutral, colourful or rather a natural look ... the options are endless.

## ACOUSTIC PERFORMANCE

Heradesign® is an exceptionally good absorber because the wood fibres used in Heradesign® give it a porous, diffuse surface. This means that instead of sound hitting a flat surface and reflecting, it hits the diffuse surface and is both absorbed and diffused.

Heradesign®'s outstanding sound absorption properties mean that when used in conjunction with a layer of insulation, weighted sounds absorption values to up to NRC 0.95 can be achieved.

### 15MM HERADESIGN FINE

| Ceiling / Wall Cavity                   |      | Frequency (Hz) |      |      |      |      |      | a <sub>w</sub> | NRC  |
|---|------|----------------|------|------|------|------|------|----------------|------|
| Insulation type                         | (mm) | 125            | 250  | 500  | 1000 | 2000 | 4000 |                |      |
| Without Insulation                      | 0    | 0.05           | 0.10 | 0.20 | 0.55 | 0.85 | 0.65 | 0.30           | 0.45 |
|   | 30   | 0.10           | 0.20 | 0.60 | 0.75 | 0.55 | 0.75 | 0.50           | 0.55 |
|   | 100  | 0.15           | 0.50 | 0.80 | 0.55 | 0.45 | 0.75 | 0.55           | 0.60 |
|   | 200  | 0.35           | 0.70 | 0.65 | 0.45 | 0.55 | 0.80 | 0.55           | 0.60 |
| Glasswool 50mm - 22kg/m <sup>3</sup>    | 275  | 0.60           | 0.85 | 0.80 | 0.75 | 0.65 | 0.80 | 0.75           | 0.75 |
| Mineral wool 30mm - 60kg/m <sup>3</sup> | 30   | 0.15           | 0.65 | 1.00 | 0.75 | 0.65 | 0.80 | 0.75           | 0.75 |
|   | 100  | 0.40           | 0.90 | 0.90 | 0.65 | 0.65 | 0.80 | 0.70           | 0.80 |

### 15MM HERADESIGN SUPERFINE

| Ceiling / Wall Cavity                   |      | Frequency (Hz) |      |      |      |      |      | a <sub>w</sub> | NRC  |
|---|------|----------------|------|------|------|------|------|----------------|------|
| Insulation type                         | (mm) | 125            | 250  | 500  | 1000 | 2000 | 4000 |                |      |
| Without Insulation                      | 0    | 0.05           | 0.10 | 0.25 | 0.45 | 0.90 | 0.80 | 0.30           | 0.45 |
|   | 30   | 0.05           | 0.15 | 0.35 | 0.70 | 0.65 | 0.70 | 0.40           | 0.45 |
|   | 280  | 0.35           | 0.55 | 0.45 | 0.50 | 0.60 | 0.75 | 0.50           | 0.55 |
| Mineral wool 30mm - 50kg/m <sup>3</sup> | 30   | 0.10           | 0.45 | 0.90 | 0.95 | 0.80 | 0.85 | 0.75           | 0.80 |
| Mineral wool 40mm - 50kg/m <sup>3</sup> | 280  | 0.65           | 0.85 | 0.90 | 0.90 | 0.85 | 0.85 | 0.90           | 0.90 |

### 25MM HERADESIGN FINE

| Ceiling / Wall Cavity                    |      | Frequency (Hz) |      |      |      |      |      | a <sub>w</sub> | NRC  |
|--|------|----------------|------|------|------|------|------|----------------|------|
| Insulation type                          | (mm) | 125            | 250  | 500  | 1000 | 2000 | 4000 |                |      |
| Without Insulation                       | 0    | 0.05           | 0.15 | 0.35 | 0.95 | 0.75 | 0.8  | 0.40           | 0.55 |
|  | 100  | 0.15           | 0.55 | 0.90 | 0.60 | 0.70 | 0.70 | 0.70           | 0.70 |
|  | 175  | 0.35           | 0.80 | 0.65 | 0.60 | 0.80 | 0.90 | 0.65           | 0.70 |
|  | 600  | 0.60           | 0.40 | 0.45 | 0.55 | 0.70 | 0.85 | 0.55           | 0.55 |
| Mineral wool 30mm - 60kg/m <sup>3</sup>  | 60   | 0.40           | 0.90 | 0.90 | 0.70 | 0.80 | 0.80 | 0.80           | 0.85 |
| Mineral wool 80mm - 48kg/m <sup>3</sup>  | 80   | 0.70           | 1.00 | 0.80 | 0.75 | 0.80 | 0.80 | 0.80           | 0.85 |
| Mineral wool 60mm - 50kg/m <sup>3</sup>  | 100  | 0.55           | 1.00 | 0.80 | 0.75 | 0.80 | 0.80 | 0.80           | 0.85 |
| Mineral wool 200mm - 50kg/m <sup>3</sup> | 200  | 0.85           | 0.90 | 0.90 | 0.75 | 0.75 | 0.85 | 0.80           | 0.85 |
| Glasswool 50mm - 22kg/m <sup>3</sup>     | 600  | 0.70           | 0.70 | 0.90 | 0.80 | 0.80 | 0.90 | 0.85           | 0.80 |

### 25MM HERADESIGN SUPERFINE

| Ceiling / Wall Cavity                   |      | Frequency (Hz) |      |      |      |      |      | a <sub>w</sub> | NRC  |
|---|------|----------------|------|------|------|------|------|----------------|------|
| Insulation type                         | (mm) | 125            | 250  | 500  | 1000 | 2000 | 4000 |                |      |
| Without Insulation                      | 0    | 0.05           | 0.15 | 0.30 | 0.75 | 0.95 | 0.75 | 0.35           | 0.55 |
|   | 30   | 0.10           | 0.20 | 0.45 | 0.70 | 0.55 | 0.75 | 0.45           | 0.50 |
|   | 60   | 0.10           | 0.30 | 0.75 | 0.70 | 0.65 | 0.80 | 0.60           | 0.60 |
|   | 100  | 0.15           | 0.40 | 0.80 | 0.70 | 0.65 | 0.90 | 0.65           | 0.65 |
|   | 175  | 0.25           | 0.65 | 0.70 | 0.60 | 0.75 | 0.90 | 0.70           | 0.70 |
|   | 275  | 0.30           | 0.50 | 0.40 | 0.50 | 0.65 | 0.75 | 0.50           | 0.50 |
| Glasswool 50mm - 22kg/m <sup>3</sup>    | 60   | 0.35           | 0.90 | 0.95 | 0.85 | 0.90 | 0.90 | 0.90           | 0.90 |
|   | 275  | 0.70           | 0.90 | 0.90 | 0.90 | 0.80 | 0.95 | 0.90           | 0.90 |
| Mineral wool 30mm - 60kg/m <sup>3</sup> | 60   | 0.30           | 0.75 | 1.00 | 0.85 | 0.85 | 0.95 | 0.90           | 0.85 |
| Mineral wool 60mm - 50kg/m <sup>3</sup> | 100  | 0.55           | 1.00 | 1.00 | 0.95 | 0.90 | 0.95 | 0.95           | 0.95 |



#### AUCKLAND + HEAD OFFICE

9 McNab Street, Penrose  
PO Box 13 451, Onehunga 1643  
Phone 09 579 1338  
Fax 09 579 2383

#### WELLINGTON

43 Hutt Road, Petone  
PO Box 33 338, Petone, Lower Hutt 5046  
Phone 04 568 8855  
Fax 04 568 8840

#### CHRISTCHURCH

37 Kingsley Street, Sydenham, Christchurch 8023  
PO Box 12244, Beckenham, Christchurch  
Phone 03 338 8763  
Fax 03 338 0680

0800 POTTERS  
[www.potters.co.nz](http://www.potters.co.nz)  
[info@potters.co.nz](mailto:info@potters.co.nz)

---

Wall | Ceiling | Insulation | Whiteboards + Pinboards

---

WWW.POTTERS.CO.NZ