

low profile ducting

MANROSE®



LOW PROFILE DUCTING RANGE

www.securimax.co.nz

“ducting solutions to suit every application”

Modular Flat Channel Ventilation Systems



The Manrose range of low profile modular ducting systems include the most comprehensive range of flat channel ducting, connectors, reducers and accessories, offering you reliable ducting solutions to suit every application.

Designed with significant advantages over conventional round systems, low profile ducting is easily concealed when installed along the top of wall units.

It can also be fitted in ceiling voids and cavity walls, providing versatility whilst remaining unobtrusive. All Manrose system parts and channels are made from flame-retardant material.

Four Low Profile System Sizes

- **110mm x 54mm:** (equivalent to 100mm round diameter). Suitable for applications requiring low extraction rates, such as ventilation of laundries and toilets. With a 5300mm² cross-section it provides efficient ducting for short, straight runs connecting to a 100mm round spigot.
- **204mm x 60mm:** (equivalent to 125mm round diameter). Suitable for ducting of range hoods with 100, 125 or 150mm round exhaust spigots. The flat channel cross section of 11200mm² increases efficiency.
- **220mm x 90mm:** (equivalent to 150mm round diameter). Suitable for high performance extraction or supply. The flat channel cross section of 18576mm² makes it highly efficient and higher extraction rates are achieved.
- **300 x 25mm:** For applications where space is very limited.



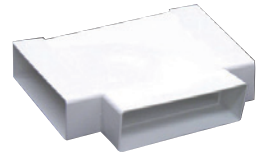
FLAT CHANNEL 1.5M LONG

	Size (mm)	Order Code
●	110 x 54	DCT0013
●	204 x 60	DCT0519
●	220 x 90	DCT1443
●	300 x 25	DCT1460



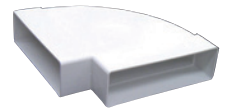
HORIZONTAL T-PIECE CONNECTOR

	Size (mm)	Order Code
●	110 x 54	DCT1479
●	204 x 60	DCT1114



HORIZONTAL 90° BEND

	Size (mm)	Order Code
●	110 x 54	DCT0125
●	204 x 60	DCT0524
●	220 x 90	DCT1448
●	300 x 25	DCT2097



HORIZONTAL 45° BEND

	Size (mm)	Order Code
●	300 x 25	DCT2098



CONNECTOR

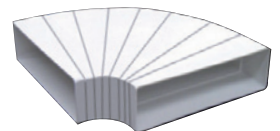
	Size (mm)	Order Code
●	110 x 54	DCT0014
●	204 x 60	DCT0520
●	220 x 90	DCT1442
●	300 x 25	DCT1459



ADJUSTABLE HORIZONTAL BEND

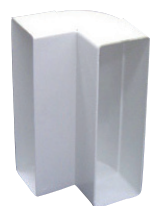
	Size (mm)	Order Code
●	204 x 60	DCT1480

Cut to required angle



VERTICAL 90° BEND

	Size (mm)	Order Code
●	110 x 54	DCT0126
●	204 x 60	DCT0525
●	220 x 90	DCT1447
●	300 x 25	DCT2099



VERTICAL 45° BEND

	Size (mm)	Order Code
●	300 x 25	DCT1455



LOW PROFILE DUCTING RANGE

“ducting solutions to suit every application”

Manrose Low Profile Ducting Range



ELBOW BEND (RECT:100mm RND)

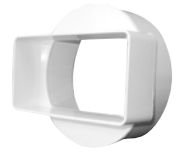
Size (mm)	Order Code
● 110 x 54	DCT0124 (male)
● 110 x 54	DCT0015 (female)
● 204 x 60	DCT0521
● 220 x 90	DCT1444*
● 300 x 25	DCT2095

*Rotating offset spigot



SHORT ADAPTOR (RECT:150mm RND)

Size (mm)	Order Code
● 110 x 54	DCT0131 (male)
● 110 x 54	DCT0127 (female)



ELBOW BEND (RECT:125mm RND)

Size (mm)	Order Code
● 204 x 60	DCT0522
● 220 x 90	DCT1440
● 300 x 25	DCT2096

*Rotating offset spigot



ADAPTOR (RECT: RND)

Size (mm)	Order Code
● 110 x 54:100mm	DCT1482
● 204 x 60:125mm	DCT0526
● 220 x 90:150mm	DCT1446
● 300 x 25:100mm	DCT1461



ELBOW BEND (RECT:150mm RND)

Size (mm)	Order Code
● 204 x 60	DCT0523
● 220 x 90	DCT1441*

*Rotating offset spigot



WALL PLATE (RECT)

Size (mm)	Order Code
● 110 x 54	DCT0016
● 204 x 60	DCT0528



DOUBLE AIRBRICK

Size (mm)	Order Code
● 232 x 137	DCT1450



DOUBLE AIRBRICK ADAPTOR

Size (mm)	Order Code
● 220 x 90:232 x 138	DCT1451



AIRBRICK INSERT (204 x 60mm)

Horizontal

Size (mm)	Order Code
● 204 x 60	DCT0137



Vertical

Size (mm)	Order Code
● 204 x 60	DCT1414

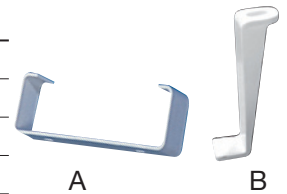


For DCT0137 the following reducer or connector is required to connect the Airbrick Insert to the duct:

● 110 x 54mm requires Reducer	Order code: DCT0136
● 204 x 60mm requires Connector	Order code: DCT0520

FLAT CHANNEL CLIPS

Size (mm)	Order Code
● A: 110 x 54	DCT0134
● A: 204 x 60	DCT0527
● B: 220 x 90	DCT1445*
● B: 300 x 25	DCT1458*



*Two clips are required to secure ducting

FLAT CHANNEL REDUCER

To fit 204 x 60mm flat channel or airbrick

Size (mm)	Order Code
● 110 x 54	DCT0136
● 204 x 60	DCT1452
● 300 x 25	DCT1456



DOUBLE AIRBRICK REDUCER

Connects Double Airbrick (DCT1450) to 100, 125 & 150mm round

Size (mm)	Order Code
235 x 140	DCT1453



Round Ducting And Accessories

ALUDUCT - ALUMINISED FLEXIBLE DUCT

Spiral wire reinforced laminate construction. Properties include: vapour-proof, fire resistant, aluminium/polyester laminate, silver finish, non collapsing, non rotting, retains extended length. Temp. range -30°C to 140°C.

Size (mm)	Length (m)	Order Code
Ø 100	1.5	DCT0357
Ø 125	1.5	DCT0358
Ø 150	1.5	DCT0359

Size (mm)	Length (m)	Order Code
Ø 100	3	DCT0328
Ø 125	3	DCT0329
Ø 150	3	DCT0330

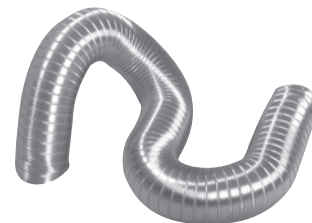


SEMIDUCT - SEMI-RIGID DUCT

Flexible but strong corrugated aluminium, silver finish, spiral wound with a unique interlocked and knurled continuous seam. Light yet self-supporting over long lengths. Temperature range: -30°C to 250°C.

Size (mm)	Length (m)	Order Code
Ø 100	1.5	DCT0333
Ø 125	1.5	DCT0334
Ø 150	1.5	DCT0335

Size (mm)	Length (m)	Order Code
Ø 100	3	DCT0114
Ø 125	3	DCT0115
Ø 150	3	DCT0116



All ducting complies with NZ Building Code fire rating requirements.

WHITE FINISH SOLID TUBE GALVANISED

Size (mm)	Order Code
Ø 100 x 0.9m	DCT0151
Ø 125 x 0.9m	DCT0146
Ø 150 x 0.9m	DCT0147



LOW PROFILE EXTERNAL GRILLE

Size (mm)	Order Code
100	DCT2200
125	DCT2201
150	DCT2202



WHITE FINISH SOLID TUBE PLASTIC

Size (mm)	Order Code
Ø 100 x 1m	DCT1424
Ø 125 x 1m	DCT1425
Ø 150 x 1m	DCT1426



STANDARD EXTERNAL GRILLE

Size (mm)	Order Code
100	DCT2206



REDUCING CONNECTOR

Size (mm)	Order Code
125: 100	DCT2067
150: 125	DCT2066



WALL PLATE (RND)

Size (mm)	Order Code
100	DCT0148
125	DCT0149
150	DCT0150



STRAIGHT DUCT CONNECTOR

Size (mm)	Order Code
100	DCT0159
125	DCT0037
150	DCT0059



For the full range of **MANROSE** Fans, Ducting, Grilles and Accessories visit our websites.

www.securimax.co.nz www.manrose.com.au

Securimax reserves the right to alter specifications without notice.

Dealer Details: