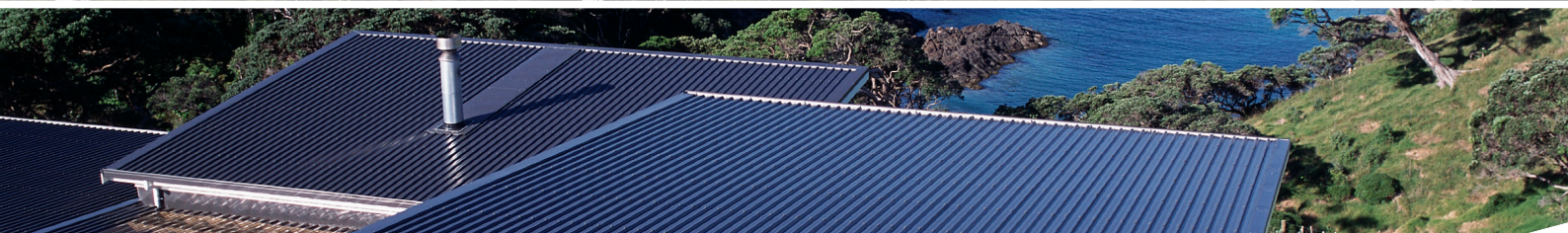


RIBLINE®

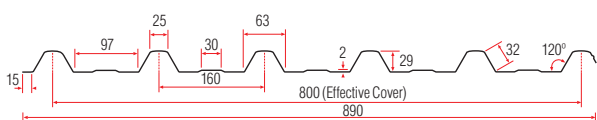
Roofing
Industries

roof.co.nz

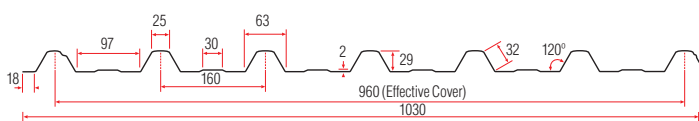


RIBLINE®

RIBLINE® 800



RIBLINE® 960

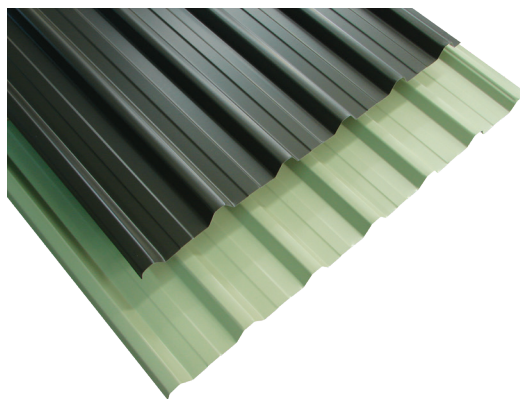


All measurements are in mm and are nominal.

Description

Whilst aesthetics and overall appearance remain a powerful motivating factor during selection of roof type, of equal importance is the ability of the roofing product to prevent water leakage through the lapping edge, particularly on lower pitched roofs.

Ribline®'s unique capillary lapping edge enhances performance whilst offering security against water ingress. Supplied in both 800mm and 960mm sheet coverage options, Ribline® offers additional benefits such as less laps, reduction in the number of fasteners required, quicker installation and ultimately a reduction in project cost.



RIBLINE®

Applications

- ▶ Residential roofing and cladding
- ▶ Rural and lifestyle roofing and cladding
- ▶ Industrial and commercial roofing and cladding
- ▶ Canopies
- ▶ Drape/spring curving
- ▶ Fencing

Roof Pitch

In accordance with E2/AS1 of the NZ Building Code, the minimum pitch for Ribline® is 3°. For roof lengths greater than 18 metres, contact Roofing Industries for specific advice.

Materials

- ▶ Zinalume® Steel: 0.40 or 0.55 BMT
- ▶ Galvanised Steel: 0.40 or 0.55 BMT
- ▶ Prepainted Colorcote® Zinacore™ or Colorsteel® Endura®, Maxx® 0.40 or 0.55 BMT
- ▶ Prepainted Colorcote® or Colorsteel® over Galvanised steel: 0.40 or 0.55 BMT
- ▶ Prepainted Colorcote® Magnaflow™ 0.40 or 0.55 BMT

For information on Aluminium, Stainless Steel, Zinc, Copper, Zinc Magnesium Alloy and additional paint coatings, contact Roofing Industries.

MANUFACTURER'S SPECIFICATIONS for compliance with E2/AS1

Ribline® 800 Sheet width: 890 mm	Sheet coverage: 800 mm
Ribline® 960 Sheet width: 1030 mm	Sheet coverage: 960 mm
Sheet length: Any length (subject to transportation)	Minimum roof pitch: 3°

SPAN TABLES – ROOFING (Steel Substrate Material)

Type of Span	Maximum Span (Metres)	Maximum Span (Metres)
	0.40 mm BMT	0.55 mm BMT
Intermediate	1.500	2.200
End	1.000	1.400

For further information, consult the Ribline® Profile Technical Summary at www.roof.co.nz

Durability

Selection of the correct grade of material and appropriate surface coating is imperative to ensure Ribline® will perform satisfactorily in the environment it is to be installed and meets the requirements of the NZ Building Code. Environmental Categories and Surface Coating literature is available on request.

Accessories

A full range of matching accessories is available, including Vari Pitch Ridging, Flashings, Underlays, Insulation, Fasteners, Rotary Roof Ventilators and EZI-FLO Rainwater Systems.

Translucent and Transparent roofing

Ribline® is available as glass reinforced translucent roofing and cladding. A similar 5 rib 760mm cover polycarbonate product can also be supplied.

Fixings and Fasteners

Fixings and fasteners are to be of an approved type, compatible with all materials, the environment and meeting the requirements of the NZ Building Code. Installation is to be in accordance with E2/AS1 and the NZ Metal Roof and Wall Cladding Code of Practice. Further information is available via the www.roof.co.nz website.

Roof Application

- Timber Purlins** 12 x 65 Timbertite® Class 5 screws with Neos*
- Steel Purlins** 12 x 55 Steeltite® Class 5 screws with Neos*

For various fixing methods meeting differing loads, refer to the Ribline® Profile Technical Summary available at www.roof.co.nz
*For sheet lengths 8-18 metres to comply with E2/AS1 the lower 50% of the roof should be fixed using oversize holes at fastening points and a 30 mm EPDM and matching metal profile washer. For structures outside the scope of E2/AS1, consult the Ribline® Profile Technical Summary available at www.roof.co.nz for alternative options.

Walling Application

Fix in the pan adjacent to every rib using class 5 Timbertites® or Steeltites® and Neos as appropriate, ensuring that when the fastener is into timber it is of sufficient length to penetrate the framing by 30 mm

Note: the above recommendations are suitable for steel based materials, for other materials refer to our website www.roof.co.nz.

Curving

Steel substrate Ribline® can be draped curved to a minimum radius of:
0.40 mm BMT - 65 metres
0.55 mm BMT - 30 metres
Whilst a tighter radius is achievable, aesthetics may be affected.

Ordering

Roofing Industries staff can provide technical assistance to ensure accurate ordering of roofing and accessories thereby avoiding costly errors. Ribline® is manufactured and delivered cut to length subject to transport restrictions.

Handling and storage

- ▶ On delivery, visually inspect sheets for damage.
- ▶ Store Ribline® and accessories on evenly spaced and supportive dunnage, clear of the ground and under cover. If packs become wet and the product not used immediately, individually separate sheets to allow air circulation and drying.
- ▶ Do not drag sheets across each other.
- ▶ If protected with strippable plastic film, keep under cover away from U/V light and remove as the product is being installed.

Installation

Prior to commencing your project, Please refer to Roofing Industries; Handling Storage and Installation Guide, the NZ Metal Roof and Wall Cladding Code of Practice along with the Ribline® profile technical summary available from www.roof.co.nz. Failure to install the product to industry requirements will void the warranty.

Maintenance

Regular maintenance will extend the life of the roof and accessories. It is strongly advised that areas not receiving regular rain washing should be washed with freshwater on a regular basis. On purchasing your roof it is imperative to request a copy of the maintenance guide(s) and familiarise yourself with industry requirements. Failure to do so can void any warranty.

Warranties

Warranties meet the statutory requirements of the NZ Building Code, are available on request and reflect our New Zealand owned and operated company, test facilities and local climatic conditions. Sample warranties are available at website www.roof.co.nz.

ROOFING INDUSTRIES BRANCHES

Auckland	(Head Office) 5 John Glenn Avenue, North Harbour 0632.
Whangarei	4A Fraser Street, Whangarei 0112.
Pukekohe	212 Manukau Road, Pukekohe, South Auckland 2120.
Hamilton	78 Sunshine Avenue, Te Rapa, Hamilton 3241.
Tauranga	98 Birch Avenue, Tauranga 3110.
Mount Maunganui	49 Aerodrome Road, Mt. Maunganui 3116.
Taupo	1101 Rakaunui Road, Taupo 3351.
Napier	39A Turner Place, Onekawa, Napier 4110.
New Plymouth	14 Constance Street, Waiwhakaiho, New Plymouth 4312.
Palmerston North	653 Tremaine Avenue, Palmerston North 4410.
Wellington	22 Cornish Street, Petone, Wellington 5012.
Blenheim	Unit 3, 24 Herbert Street, Blenheim 7201.
Christchurch	12 William Lewis Drive, Sockburn, Christchurch 8042.
Cromwell	29A McNulty Road, Cromwell 9310.

Ph:(09) 414 4585
Ph:(09) 437 2040
Ph:(09) 238 0050
Ph:(07) 849 5115
Ph:(07) 578 2650
Ph:(07) 929 7034
Ph:(07) 376 7971
Ph:(06) 281 2586
Ph:(06) 758 3003
Ph:(06) 353 8480
Ph:(04) 238 4390
Ph:(03) 934 5901
Ph:(03) 339 2324
Ph:(03) 928 6869

Fax:(09) 414 4586
Fax:(09) 437 5010
Fax:(09) 238 6639
Fax:(07) 849 2115
Fax:(07) 578 1272
Fax:(07) 929 7035
Fax:(07) 376 7972
Fax:(06) 281 2589
Fax:(06) 757 8259
Fax:(06) 353 8470
Fax:(04) 238 4391
Fax:(03) 994 5902
Fax:(03) 339 2325
Fax:(03) 928 6610

E:auckland@roof.co.nz
E:northland@roof.co.nz
E:franklin@roof.co.nz
E:waikato@roof.co.nz
E:tauranga@roof.co.nz
E:tauranga@roof.co.nz
E:taupo@roof.co.nz
E:napier@roof.co.nz
E:taranaki@roof.co.nz
E:centeral@roof.co.nz
E:wellington@roof.co.nz
E:blenheim@roof.co.nz
E:christchurch@roof.co.nz
E:cromwell@roof.co.nz

It should be noted that this technical data sheet is based around the requirements of E2/AS1 of the NZBC. For buildings or uses that are outside the scope of, or NOT required to comply with E2/AS1 alternative technical data may apply. Please refer to our website www.roof.co.nz

Roofing Industries Technical Helpline 0800 844 822

This literature should be read in conjunction with our Ribline® profile technical summary at www.roof.co.nz



WWW.ROOF.CO.NZ

© Roofing Industries 2021

