

600 Series

500 Series





# Keeping it Green

## Designed and Engineered in New Zealand

The 600 and 500 Series ranges were designed locally in Christchurch, taking into account the specific needs of New Zealand and Australian homes and buildings.

## RoHS Compliant

Schneider Electric are aware of the environmental responsibilities each of us shares. The 600 and 500 Series ranges are produced according to the European Union's RoHS (Reduction of Hazardous Substances) directive which restricts the use of hazardous materials in manufacture. This directive is not mandatory in New Zealand and Australia.

## Recycleable Materials

The plastics used in 600 and 500 Series are recycleable so once no longer required, need not place a burden on our landfills.



# Contents



## Switches - 600 Series

Standard switches	3
Waterproof switches - IP56	4 - 5
Permanent connection unit	6
Range switches	6
Fan speed controllers	6
Dimmer switches	7
Key card switches	8
Timers	8 - 9

## Switch Plates - 600 Series

Architrave switch plates	10
Worktop switch plates	10
Standard switch plates	11
Switch plates with ID facility	12 - 13
Blank switch plates	13

## Cover Plates - 600 Series

Combination cover plates	14 - 15
Switch cover plates	16 - 17

## Protected Switches and Sockets - 600 Series

RCD protected sockets	18
Shaver socket	19
Surge protected double socket outlets	19
Thermal protected double socket - 10A	19

## Switched Sockets - 600 Series

Vertical switched sockets	20 - 21
Horizontal switched sockets	22 - 23
Worktop switched sockets	24 - 25
Quad socket outlets	26

## Unswitched Sockets - 600 Series

Horizontal unswitched socket	25
------------------------------	----

## Telephone and TV Outlets - 600 Series

Telephone and TV outlets	27
--------------------------	----

## Switch Modules - 600 Series

Standard switch modules	28 - 30
Dedicated switch modules	28
Switch modules with hinged lids	30
Rotary switch modules	30
Tactile switch modules	30
Pull cord switch modules	31
Permanent connection module	31

## Switch Modules - 600 Series continued

Modules	32
Dimmers	33
Surge protection module	34
Fan speed control modules	34
Communication modules	35 - 37
Lexcom Home connectors	37
Blank modules	37
Module ejector	37

## Switch Plates - 500 Series

Standard switch plates	38
Architrave switch plates	39
Worktop switch plates	39
Surface switch plates	40
Surface mounting enclosure	40
Telephone switch plates	40

## Switches - 500 Series

Surface switch	41
Ceiling switch	41
Key lock switches	43
Range switches	43

## Sockets - 500 Series

Switched sockets	42
Shaver socket	43
Unswitched socket	44
Square plate sockets	44
Round plate sockets	44
Threaded socket	44
RCD protection device	44
Conversion plate	45
Floor socket	45
Power tower	45
Module mounting clips	45

## Mounting Accessories - 600/500 Series

Flush boxes	46
Mounting brackets	46 - 47
Mounting blocks and spacers	47 - 48
Mounting brackets	49
Stainless steel switch plates	49
Switch panel wall boxes	50
Terminals	50
Junction boxes	51

# Push-Button Switching

Push button switches have many benefits for the modern home owner.

- **Visual appeal** - their attractive appearance blends with the increasing number of electronic gadgets and appliances found in today's living spaces.
- **Improved functionality** – push button switches produce a consistently quick switching action, reducing the possibility of prolonged arcing inside the switch.
- **Ease of use** - the integral blue LED indicators can be set to show when power is switched on (great when the light being controlled is in another room such as a garage); or as an aid to finding the switch in the dark when it's turned off (entranceways and bathrooms are good examples of where this comes in handy). If not required they can be left disconnected.



Order as 68xVH gridplate plus the appropriate number(x) of 681MT16 switch modules

## Standard Switches

681

### → 1-GANG SWITCH



Overall Dimensions	118mm x 74mm
Mounting Centres	84mm
Poles / Ways	1 Pole / 2 Way
Ratings	Voltage 250V a.c. 50Hz Current 20A / 16AX / M60 (AS/NZS 3133)
Terminal Capacity	Max. 4 x 1.5mm, or 2 x 2.5mm cables
Metal Coverplate Options	Suits 682M# metal cover plates

684

### → 4-GANG SWITCH



Overall Dimensions	118mm x 74mm
Mounting Centres	84mm
Poles / Ways	1 Pole / 2 Way
Ratings	Voltage 250V a.c. 50Hz Current 20A / 16AX / M60 (AS/NZS 3133)
Terminal Capacity	Max. 4 x 1.5mm, or 2 x 2.5mm cables
Metal Coverplate Options	Suits 684M# metal cover plates
Notes	Order as 684VH and 4 x 681M20 switch modules

682

### → 2-GANG SWITCH



Overall Dimensions	118mm x 74mm
Mounting Centres	84mm
Poles / Ways	1 Pole / 2 Way
Ratings	Voltage 250V a.c. 50Hz Current 20A / 16AX / M60 (AS/NZS 3133)
Terminal Capacity	Max. 4 x 1.5mm, or 2 x 2.5mm cables
Metal Coverplate Options	Suits 682M# metal cover plates

685

### → 5-GANG SWITCH



Overall Dimensions	118mm x 74mm
Mounting Centres	84mm
Poles / Ways	1 Pole / 2 Way
Ratings	Voltage 250V a.c. 50Hz Current 20A / 16AX / M60 (AS/NZS 3133)
Terminal Capacity	Max. 4 x 1.5mm, or 2 x 2.5mm cables
Metal Coverplate Options	Suits 686M# metal cover plates
Notes	Order as 685VH and 5 x 681M20 switch modules

683

### → 3-GANG SWITCH



Overall Dimensions	118mm x 74mm
Mounting Centres	84mm
Poles / Ways	1 Pole / 2 Way
Ratings	Voltage 250V a.c. 50Hz Current 20A / 16AX / M60 (AS/NZS 3133)
Terminal Capacity	Max. 4 x 1.5mm, or 2 x 2.5mm cables
Metal Coverplate Options	Suits 683M# metal cover plates

686

### → 6-GANG SWITCH



Overall Dimensions	118mm x 74mm
Mounting Centres	84mm
Poles / Ways	1 Pole / 2 Way
Ratings	Voltage 250V a.c. 50Hz Current 20A / 16AX / M60 (AS/NZS 3133)
Terminal Capacity	Max. 4 x 1.5mm, or 2 x 2.5mm cables
Metal Coverplate Options	Suits 686M# metal cover plates
Notes	Order as 686VH and 6 x 681M20 switch modules



# Switches – 600 series

## Waterproof Switches - IP56

### 681VWP

→ VERTICAL  
1-GANG SWITCH



### 681HWP

→ HORIZONTAL  
1-GANG SWITCH

Overall Dimensions	118mm x 74mm
Mounting Centres	84mm
Poles / Ways	1 Pole / 2 Way
Ratings	Voltage 250V a.c. 50Hz Current 16A / 16AX/ M50 (AS/NZS 3133)
Terminal Capacity	Max. 4 x 1.5mm, or 2 x 2.5mm cables
Metal Coverplate Options	Suits 681M# metal cover plates
Notes	IP56 Protection

### 682VWPD

→ DEDICATED VERTICAL  
2-GANG SWITCH



Overall Dimensions	118mm x 74mm
Mounting Centres	84mm
Poles / Ways	1 Pole / 2 Way
Ratings	Voltage 250V a.c. 50Hz Current 16A / 16AX/ M50 (AS/NZS 3133)
Terminal Capacity	Max. 4 x 1.5mm, or 2 x 2.5mm cables
Metal Coverplate Options	Suits 682M# metal cover plates
Notes	IP56 Protection. Switches labelled LIGHT, FAN

### 682VWP

→ VERTICAL  
2-GANG SWITCH



### 682HWP

→ HORIZONTAL  
2-GANG SWITCH

Overall Dimensions	118mm x 74mm
Mounting Centres	84mm
Poles / Ways	1 Pole / 2 Way
Ratings	Voltage 250V a.c. 50Hz Current 16A / 16AX/ M50 (AS/NZS 3133)
Terminal Capacity	Max. 4 x 1.5mm, or 2 x 2.5mm cables
Metal Coverplate Options	Suits 682M# metal cover plates
Notes	IP56 Protection

### 683VWP

→ VERTICAL  
3-GANG SWITCH



### 683HWP

→ HORIZONTAL  
3-GANG SWITCH

Overall Dimensions	118mm x 74mm
Mounting Centres	84mm
Poles / Ways	1 Pole / 2 Way
Ratings	Voltage 250V a.c. 50Hz Current 16A / 16AX/ M50 (AS/NZS 3133)
Terminal Capacity	Max. 4 x 1.5mm, or 2 x 2.5mm cables
Metal Coverplate Options	Suits 682M# metal cover plates
Notes	IP56 Protection



## Waterproof Switches - IP56

### 683VWPD

→ **DEDICATED VERTICAL  
3-GANG SWITCH**



### 683HWPD

→ **DEDICATED HORIZONTAL  
3-GANG SWITCH**



Overall Dimensions	118mm x 74mm
Mounting Centres	84mm
Poles / Ways	1 Pole / 2 Way
Ratings	Voltage 250V a.c. 50Hz Current 16A / 16AX/ M50 (AS/NZS 3133)
Terminal Capacity	Max. 4 x 1.5mm, or 2 x 2.5mm cables
Metal Coverplate Options	No metal coverplate option available
Notes	IP56 Protection. Switches labelled LIGHT, FAN, HEAT

### 684VWPD

→ **DEDICATED VERTICAL  
4-GANG SWITCH**



### 684HWPD

→ **DEDICATED HORIZONTAL  
4-GANG SWITCH**



Overall Dimensions	118mm x 74mm
Mounting Centres	84mm
Poles / Ways	1 Pole / 2 Way
Ratings	Voltage 250V a.c. 50Hz Current 16A / 16AX/ M50 (AS/NZS 3133)
Terminal Capacity	Max. 4 x 1.5mm, or 2 x 2.5mm cables
Metal Coverplate Options	Suits 684M# metal coverplates
Notes	IP56 Protection. Switches labelled LIGHT, FAN, HEAT, HEAT

### 684VWP

→ **VERTICAL  
4-GANG SWITCH**



### 684HWP

→ **HORIZONTAL  
4-GANG SWITCH**



Overall Dimensions	118mm x 74mm
Mounting Centres	84mm
Poles / Ways	1 Pole / 2 Way
Ratings	Voltage 250V a.c. 50Hz Current 16A / 16AX/ M50 (AS/NZS 3133)
Terminal Capacity	Max. 4 x 1.5mm, or 2 x 2.5mm cables
Metal Coverplate Options	Suits 684M# metal coverplates
Notes	IP56 Protection

### 651VWP

→ **PERMANENT CONNECTION  
UNIT - IP56**



Overall Dimensions	118mm x 74mm
Mounting Centres	84mm
Poles / Ways	1 Pole / 2 Way
Ratings	Voltage 250V a.c. 50Hz Current 16A / 16AX/ M50 (AS/NZS 3133)
Terminal Capacity	Max. 4 x 1.5mm, or 2 x 2.5mm cables
Metal Coverplate Options	Suits 682M# metal cover plates
Notes	IP56 Protection

# Switches – 600 series

## Permanent Connection Unit

651

### PERMANENT CONNECTION UNIT



Overall Dimensions	118mm x 74mm
Mounting Centres	84mm
Poles / Ways	1 Pole / 2 Way
Ratings	Voltage 250V a.c. 50Hz Current 20A / 16AX / M60 (AS/NZS 3133)
Terminal Capacity	Max. 4 x 1.5mm, or 2 x 2.5mm cables
Metal Coverplate Options	Suits 682M# metal cover plates

## Range Switches

680

### RANGE SWITCH - SP 32A



Overall Dimensions	118mm x 74mm
Mounting Centres	84mm
Poles / Ways	1 Pole / 1 Way
Ratings	Voltage 250V a.c. 50Hz Current 32A / 20AX / M180 (AS/NZS 3133)
Terminal Capacity	Max. 2 x 6.0mm cables
Metal Coverplate Options	Suits 680M# metal cover plates

647

### RANGE SWITCH - DP 45A



Overall Dimensions	118mm x 74mm
Mounting Centres	84mm
Poles / Ways	2 Pole / 1 Way
Ratings	Voltage 415V a.c. 50Hz Current 45A / 20AX / M180 (AS/NZS 3133)
Terminal Capacity	Max. 2 x 6.0mm cables
Metal Coverplate Options	Suits 647M# metal cover plates
Notes	Double pole switching circuits are between terminals 1&2 ; 3&4

## Fan Speed Controllers

625F

### ROTARY FAN SPEED CONTROLLER - 500W



Overall Dimensions	118mm x 74mm
Mounting Centres	84mm
Dimming Method	Leading edge phase control
Ratings	Voltage 230/240V a.c. 50Hz Maximum Load 500W Minimum Load 40W
Load Suitability	Incandescent Not suitable 240V Halogen Lighting Not suitable Low Voltage Lighting - Electronic Transformers Not suitable Low Voltage Lighting - Wire Wound Transformers Not suitable Fluorescents or Loads using Ballast or Inductors Not suitable Motor Speed Control 500W
Notes	Shaded pole or split phase motors only. Includes Thermal overload protection and kick-start feature

625C3

### 3-SPEED 'NO HUM' CEILING SWEEP FAN CONTROLLER



Overall Dimensions	118mm x 74mm
Mounting Centres	84mm
Poles / Ways	1 Pole / 2 Way
Ratings	Voltage 250V a.c. 50Hz Current 3 speed control for ceiling sweep fans up to 100VA. Uses 2µF and 3µF capacitors to control fan speed.
Terminal Capacity	Max. 4 x 1.5mm, or 2 x 2.5mm cables
Metal Coverplate Options	Suits 682M# metal cover plates



## Dimmer Switches

654

### → ROTARY DIMMER SWITCH - UNIVERSAL 450W



<b>Overall Dimensions</b>	118mm x 74mm	
<b>Mounting Centres</b>	84mm	
<b>Dimming Method</b>	Electronic trailing edge	
<b>Ratings</b>	Voltage	230/240V a.c. 50Hz
	Maximum Load	450W
	Minimum Load	20W
<b>Load Suitability</b>	Incandescent	450VA max
	240V Halogen Lighting	450VA max
	Low Voltage Lighting - Electronic Transformers	450VA max
	Low Voltage Lighting - Wire Wound Transformers	450VA max
	Fluorescents or Loads using Ballast or Inductors	Not suitable
	Motor Speed Control	240VA max
<b>Notes</b>	Shaded pole or split phase motors only.	

634L

### → ROTARY DIMMER SWITCH - LEADING EDGE 450W



<b>Overall Dimensions</b>	118mm x 74mm	
<b>Mounting Centres</b>	84mm	
<b>Dimming Method</b>	Leading edge phase control	
<b>Ratings</b>	Voltage	230/240V a.c. 50Hz
	Maximum Load	450W
	Minimum Load	20W
<b>Load Suitability</b>	Incandescent	450VA max
	240V Halogen Lighting	450VA max
	Low Voltage Lighting - Electronic Transformers	Not suitable
	Low Voltage Lighting - Wire Wound Transformers	450VA max
	Fluorescents or Loads using Ballast or Inductors	Not suitable
	Motor Speed Control	Not suitable

624T

### → ROTARY DIMMER SWITCH - TRAILING EDGE 450W



<b>Overall Dimensions</b>	118mm x 74mm	
<b>Mounting Centres</b>	84mm	
<b>Dimming Method</b>	Electronic trailing edge	
<b>Ratings</b>	Voltage	230/240V a.c. 50Hz
	Maximum Load	450W
	Minimum Load	20W
<b>Load Suitability</b>	Incandescent	450VA max
	240V Halogen Lighting	450VA max
	Low Voltage Lighting - Electronic Transformers	450VA max
	Low Voltage Lighting - Wire Wound Transformers	Not suitable
	Fluorescents or Loads using Ballast or Inductors	Not suitable
	Motor Speed Control	Not suitable

620K

### → ROTARY DIMMER SWITCH - LEADING EDGE 1000W



<b>Overall Dimensions</b>	118mm x 74mm	
<b>Mounting Centres</b>	84mm	
<b>Dimming Method</b>	Leading edge phase control	
<b>Ratings</b>	Voltage	230/240V a.c. 50Hz
	Maximum Load	1000W
	Minimum Load	150W
<b>Load Suitability</b>	Incandescent	1000VA max
	240V Halogen Lighting	1000VA max
	Low Voltage Lighting - Electronic Transformers	Not suitable
	Low Voltage Lighting - Wire Wound Transformers	1000VA max
	Fluorescents or Loads using Ballast or Inductors	Not suitable
	Motor Speed Control	Not suitable

# Switches – 600 series

## Key Card Switches

### 626VC2

#### KEY CARD SWITCH - 2 OUTPUT



Overall Dimensions	118mm x 74mm
Mounting Centres	84mm
Poles / Ways	2 Pole / 2 Way
Ratings	Voltage 250V a.c. 50Hz Current 2 x 15A (AS/NZS 3133)
Terminal Capacity	Max 4 x 1.5mm or 2 x 2.5mm cables
Metal Coverplate Options	Suits 626VCM# metal cover plates
Notes	2 x 16Amp resistive circuits controlled by a door entry card. Provision for two extra modules for manually controlled circuits or other standard modules. NC/NO outputs.

## Key Card Switches

### 626N

#### KEY CARD OPERATED SWITCH - 2 OUTPUT



Overall Dimensions	118mm x 74mm
Mounting Centres	84mm
Poles / Ways	2 Pole / 2 Way
Ratings	Voltage 250V a.c. 50Hz Current 20A / 16AX / M60 (AS/NZS 3133)
Terminal Capacity	Max 4 x 1.5mm or 2 x 2.5mm cables
Metal Coverplate Options	Suits 626NM# metal cover plates
Notes	Fitted with 2 x 681M20 switch modules (key card operated only) and two 600B blank modules. Fitted with neon locator feature. Key card included.

### 626VC4

#### KEY CARD SWITCH - 4 OUTPUT



Overall Dimensions	118mm x 74mm
Mounting Centres	84mm
Poles / Ways	2 x 1 Pole / 1 Way; plus 2 x 1 Pole / 2 way
Ratings	Voltage 230/240V a.c. 50Hz Current 4 x 10A
Terminal Capacity	Max 4 x 1.5mm or 2 x 2.5mm cables
Metal Coverplate Options	Suits 626VCM# metal cover plates
Notes	4 x 10Amp resistive circuits controlled by a door entry card. Provision for two extra modules for manually controlled circuits or other standard modules. Circuits 1 and 4 have NC/NO outputs.

## Timers

### 632

#### EXTRACTION FAN TIME DELAY



Overall Dimensions	118mm x 74mm
Mounting Centres	84mm
Poles / Ways	2 x 1 Pole / 1 Way; plus 2 x 1 Pole / 2 way
Ratings	Voltage 230/240V a.c. 50Hz Current 20A / 16AX (switch), 100VA inductive maximum (fan control)
Terminal Capacity	Max 4 x 1.5mm or 2 x 2.5mm cables
Metal Coverplate Options	Suits 682M# metal cover plates
Notes	Turns fan on when light switched on, and continues to operate fan for approx 8m 30s (factory set) after light switched off. Supplied with both standard and PRESS switch modules.



## Timers

### 648TM IN 681VH PLATE

#### → PROGRAMMABLE TIME DELAY



<b>Overall Dimensions</b>	118mm x 74mm
<b>Mounting Centres</b>	84mm
<b>Poles / Ways</b>	2 x 1 Pole / 1 Way; plus 2 x 1 Pole / 2 way
<b>Ratings</b>	Voltage 230/240V a.c. 50Hz Current 3A resistive (use relay for larger loads)
<b>Terminal Capacity</b>	Max 4 x 1.5mm or 2 x 2.5mm cables
<b>Metal Coverplate Options</b>	Suits 681M# metal cover plates
<b>Notes</b>	Installer selectable time from 15s to 120min. Three operation modes: On delay (with manual override) / On delay (with no override) / Off Delay (with manual override). Supplied with interchangeable white and black faceplates.

### 646R24

#### → 24HR ROTARY TIMER



<b>Overall Dimensions</b>	118mm x 74mm
<b>Mounting Centres</b>	84mm
<b>Poles / Ways</b>	1 Pole / 2 Way
<b>Ratings</b>	Voltage 230/240V a.c. 50Hz Current 16A Resistive, 8AX Inductive, 1350W incandescent
<b>Terminal Capacity</b>	Max 4 x 1.5mm or 2 x 2.5mm cables
<b>Metal Coverplate Options</b>	Suits 646R24M# metal cover plates
<b>Notes</b>	Minimum 100mA Switching current. 20 minute interval precision. NC and NO contacts. AUTO / OFF / MANUAL modes.

### 646E7

#### → 7 DAY ELECTRONIC TIMER



<b>Overall Dimensions</b>	118mm x 74mm
<b>Mounting Centres</b>	84mm
<b>Poles / Ways</b>	1 Pole / 2 Way
<b>Ratings</b>	Voltage 230/240V a.c. 50Hz Current 15A Resistive, 1000W tungsten
<b>Terminal Capacity</b>	Max 4 x 1.5mm or 2 x 2.5mm cables
<b>Metal Coverplate Options</b>	Suits 646E7M# metal cover plates
<b>Notes</b>	7 Day / 24Hr timing facility for up to 6 ON/OFF cycles. Rechargeable backup battery holds program info during power failures. Manual override and random timing facility

### 646R7

#### → 7 DAY ROTARY TIMER



<b>Overall Dimensions</b>	118mm x 74mm
<b>Mounting Centres</b>	84mm
<b>Poles / Ways</b>	1 Pole / 2 Way
<b>Ratings</b>	Voltage 230/240V a.c. 50Hz Current 16A Resistive, 8AX Inductive, 1350W incandescent
<b>Terminal Capacity</b>	Max 4 x 1.5mm or 2 x 2.5mm cables
<b>Metal Coverplate Options</b>	Suits 646R24M# metal cover plates
<b>Notes</b>	Minimum 100mA Switching current. 140 minute interval precision. NC and NO contacts. AUTO / OFF / MANUAL modes.

# Switch Plates – 600 series

## Architrave Switch Plates

**661VH**

→ **ONE APERTURE  
ARCHITRAVE GRID PLATE**



Overall Dimensions	78mm x 32mm
Mounting Centres	62mm
Metal Coverplate Options	Suits 661M# metal cover plates
Notes	Suitable for vertical or horizontal mounting. Suits 560 mounting block.

## Architrave Switch Plates

**664VH**

→ **FOUR APERTURE  
ARCHITRAVE GRID PLATE**



Overall Dimensions	130mm x 32mm
Mounting Centres	114mm
Metal Coverplate Options	No metal cover plates available
Notes	Suitable for vertical or horizontal mounting. Suits 565 mounting block.

**662VH**

→ **TWO APERTURE  
ARCHITRAVE GRID PLATE**



Overall Dimensions	78mm x 32mm
Mounting Centres	62mm
Metal Coverplate Options	Suits 662M# metal cover plates
Notes	Suitable for vertical or horizontal mounting. Suits 560 mounting block.

## Worktop Switch Plates

**688VH**

→ **ONE APERTURE  
WORKTOP GRID PLATE**



Overall Dimensions	48mm x 100mm
Mounting Centres	80mm
Metal Coverplate Options	Suits 688M# metal cover plates
Notes	Suitable for vertical or horizontal mounting. Suits 567S mounting block and 558 mounting bracket.

**663VH**

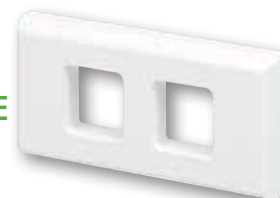
→ **THREE APERTURE  
ARCHITRAVE GRID PLATE**



Overall Dimensions	130mm x 32mm
Mounting Centres	114mm
Metal Coverplate Options	No metal cover plates available
Notes	Suitable for vertical or horizontal mounting. Suits 565 mounting block.

**689VH**

→ **TWO APERTURE  
WORKTOP GRID PLATE**



Overall Dimensions	48mm x 100mm
Mounting Centres	80mm
Metal Coverplate Options	Suits 689M# metal cover plates
Notes	Suitable for vertical or horizontal mounting. Suits 567S mounting block and 558 mounting bracket.



## Standard Switch Plates

### 681VH

#### → ONE APERTURE GRID PLATE



Overall Dimensions	118mm x 74mm
Mounting Centres	84mm
Metal Coverplate Options	Suits 681M# metal cover plates
Notes	Suitable for vertical or horizontal mounting

### 684VH

#### → FOUR APERTURE GRID PLATE



Overall Dimensions	118mm x 74mm
Mounting Centres	84mm
Metal Coverplate Options	Suits 684M# metal cover plates
Notes	Suitable for vertical or horizontal mounting

### 682VH

#### → TWO APERTURE GRID PLATE



Overall Dimensions	118mm x 74mm
Mounting Centres	84mm
Metal Coverplate Options	Suits 682M# metal cover plates
Notes	Suitable for vertical or horizontal mounting

### 685VH

#### → FIVE APERTURE GRID PLATE



Overall Dimensions	118mm x 74mm
Mounting Centres	84mm
Metal Coverplate Options	Suits 686M# metal cover plates
Notes	Suitable for vertical or horizontal mounting

### 683VH

#### → THREE APERTURE GRID PLATE



Overall Dimensions	118mm x 74mm
Mounting Centres	84mm
Metal Coverplate Options	Suits 683M# metal cover plates
Notes	Suitable for vertical or horizontal mounting

### 686VH

#### → SIX APERTURE GRID PLATE



Overall Dimensions	118mm x 74mm
Mounting Centres	84mm
Metal Coverplate Options	Suits 686M# metal cover plates
Notes	Suitable for vertical or horizontal mounting

# Switch Plates – 600 series

## Switch Plates with ID Facility

### 681VID

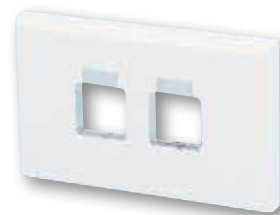
→ **ONE APERTURE  
GRID PLATE WITH  
ID FACILITY**



Overall Dimensions	118mm x 74mm
Mounting Centres	84mm
Metal Coverplate Options	No metal cover plates available
Notes	Available in white only.

### 682HID

→ **TWO APERTURE  
GRID PLATE WITH  
ID FACILITY**



Overall Dimensions	74mm x 118mm
Mounting Centres	84mm
Metal Coverplate Options	No metal cover plates available
Notes	Available in white only.

### 681HID

→ **ONE APERTURE  
GRID PLATE WITH  
ID FACILITY**



Overall Dimensions	74mm x 118mm
Mounting Centres	84mm
Metal Coverplate Options	No metal cover plates available
Notes	Available in white only.

### 683HID

→ **THREE APERTURE  
GRID PLATE WITH  
ID FACILITY**



Overall Dimensions	74mm x 118mm
Mounting Centres	84mm
Metal Coverplate Options	No metal cover plates available
Notes	Available in white only.

### 682VID

→ **TWO APERTURE  
GRID PLATE WITH  
ID FACILITY**



Overall Dimensions	118mm x 74mm
Mounting Centres	84mm
Metal Coverplate Options	No metal cover plates available
Notes	Available in white only.

### 684VID

→ **FOUR APERTURE  
GRID PLATE WITH  
ID FACILITY**



Overall Dimensions	118mm x 74mm
Mounting Centres	84mm
Metal Coverplate Options	No metal cover plates available
Notes	Available in white only.





## Switch Plates with ID Facility

### 684HID



#### FOUR APERTURE GRID PLATE WITH ID FACILITY



Overall Dimensions	118mm x 74mm
Mounting Centres	84mm
Metal Coverplate Options	No metal cover plates available
Notes	Available in white only.

## Blank Switch Plates

### 650BVH



#### STANDARD FULL-FACE BLANK PLATE



Overall Dimensions	118mm x 74mm
Mounting Centres	84mm
Metal Coverplate Options	Suits 650BM# metal cover plates
Notes	Suitable for vertical or horizontal mounting

### 650VH



#### STANDARD OEM BLANK PLATE



Overall Dimensions	118mm x 74mm
Mounting Centres	84mm
Metal Coverplate Options	Suits 686M# metal cover plates
Notes	Suitable for vertical or horizontal mounting

# Cover Plates – 600 series

## Combination Cover Plates

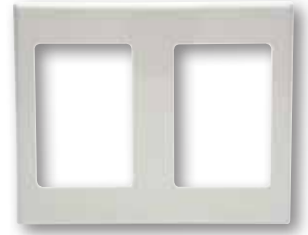
### 682-681C

→ **COMBINATION COVER for TWO MODULES & SINGLE MODULE**

Overall Dimensions	118mm x 145mm
Metal Coverplate Options	Cat 149 Flush Box.
Notes	Available in white only.

### 686-686C

→ **DUAL COVER for CAT 686 SWITCHES**



Overall Dimensions	118mm x 145mm
Metal Coverplate Options	Cat 149 Flush Box.
Notes	Available in white only.

### 683-683C

→ **DUAL COVER for CAT 683 SWITCHES**

Overall Dimensions	118mm x 145mm
Metal Coverplate Options	Cat 149 Flush Box.
Notes	Available in white only.

### 681-695C

→ **COMBINATION COVER for SINGLE MODULE & CAT 695 SOCKET**

Overall Dimensions	118mm x 145mm
Metal Coverplate Options	Cat 149 Flush Box.
Notes	Available in white only.

### 684-684C

→ **DUAL COVER for CAT 684 SWITCHES**



Overall Dimensions	118mm x 145mm
Metal Coverplate Options	Cat 149 Flush Box
Notes	Available in white only.

### 683-692C

→ **COMBINATION COVER for THREE MODULES & CAT 692 SOCKET**



Overall Dimensions	118mm x 145mm
Metal Coverplate Options	Cat 149 Flush Box
Notes	Available in white only.

## Combination Cover Plates

### 692-681C



**COMBINATION COVER for  
CAT 692 SOCKET & SINGLE  
MODULE**

Overall Dimensions	118mm x 145mm
Metal Coverplate Options	Cat 149 Flush Box.
Notes	Available in white only.

### 695-695XC



**COMBINATION COVER for  
CAT 695 SOCKET & CAT 695X  
SOCKET**

Overall Dimensions	118mm x 145mm
Metal Coverplate Options	Cat 149 Flush Box.
Notes	Available in white only.

### 692-692C



**DUAL COVER for  
CAT 692 SOCKETS**

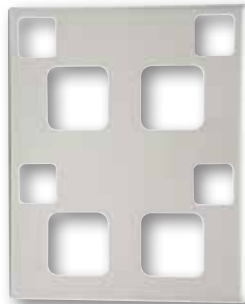


Overall Dimensions	118mm x 145mm
Metal Coverplate Options	Cat 149 Flush Box.
Notes	Available in white only.

### 695-695C



**DUAL COVER for  
CAT 695 SOCKETS**



Overall Dimensions	118mm x 145mm
Metal Coverplate Options	Cat 149 Flush Box.
Notes	Available in white only.

# Cover Plates – 600 series



626NMPB  
626NMBBZ  
626NMSS



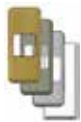
626VCMPB  
626VCMBBZ  
626VCMSS



646R24MPB  
646R24MBBZ  
646R24MSS



650BMPB  
650BMBBZ  
650BMSS  
650CP



661MPB  
661MBBZ  
661MSS  
661C



662MPB  
662MBBZ  
662MSS  
662C



681MPB  
681MBBZ  
681MSS  
681C



682MPB  
682MBBZ  
682MSS  
682C



683MPB  
683MBBZ  
683MSS  
683C



684MPB  
684MBBZ  
684MSS  
684C



686MPB  
686MBBZ  
686MSS  
686C



688MPB  
688MBBZ  
688MSS



689MPB  
689MBBZ  
689MSS

## Polished Brass Finish

612MPB	661MPB	683MPB
N/A	662MPB	683WPMPB
626VCMPB	679MPB	684MPB
646E7MPB	680MPB	686MPB
646R24MPB	681MPB	688MPB
N/A	682MPB	689MPB
650BMPB		

## Brushed Bronze Finish

612MBBZ	661MBBZ	683MBBZ
626NMBBZ	662MBBZ	683WPMBBZ
N/A	679MBBZ	684MBBZ
646E7MBBZ	680MBBZ	686MBBZ
646R24MBBZ	681MBBZ	688MBBZ
647MBBZ	682MBBZ	689MBBZ
650BMBBZ		

## Stainless Steel Finish

612MSS	661MSS	683MSS
626NMSS	662MSS	683WPMSS
626VCMSS	679MSS	684MSS
646E7MSS	680MSS	686MSS
646R24MSS	681MSS	688MSS
647MSS	682MSS	689MSS
650BMSS		

## Plastic Finish

(Available in white only)

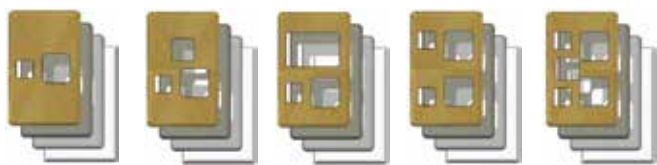
612C <sup>#</sup>	661C <sup>#</sup>	683C <sup>*</sup>
N/A	662C <sup>#</sup>	N/A
N/A	679C <sup>#</sup>	684C <sup>*</sup>
646E7C <sup>#</sup>	680C <sup>#</sup>	686C <sup>#</sup>
N/A	681C <sup>*</sup>	N/A
N/A	682C <sup>*</sup>	N/A
650CP <sup>*</sup>		

Switch cover plates can be used vertically or horizontally.  
Security screwed metal switch cover plates are available on request - an extra charge may apply.

# Available in white only

\* Available in white and black only

# Socket Cover Plates – 600 series



691MPB 691MPBBZ 691MSS 691C  
 691XMPB 691XMPBBZ 691XMSS 691XC  
 691RCDMPB 691RCDMPBBZ 691RCDMSS 691RDC  
 692MPB 692MPBBZ 692MSS 692C  
 692XMPB 692XMPBBZ 692XMSS 692XC



694MPB 694MPBBZ 694MSS 694C  
 694XMPB 694XMPBBZ 694XMSS 694XC  
 694XXMPB 694XXMPBBZ 694XXMSS 694XXC  
 695MPB 695MPBBZ 695MSS 695C



695RCDMPB 695RCDMPBBZ 695RCDMSS  
 695XMPB 695XMPBBZ 695XMSS 695XC  
 699TBMPB 699TBMPBBZ 699TBMSS 699TBC



644C



641C

## Polished Brass Finish

691MPB	694MPB	695RCDMPB
691XMPB	694XMPB	698MPB
691RCDMPB	694XXMPB	699TBMPB
692MPB	695MPB	N/A
692XMPB	695XMPB	

## Brushed Bronze Finish

691MPBBZ	694MPBBZ	695RCDMPBBZ
691XMPBBZ	694XMPBBZ	698MPBBZ
691RCDMPBBZ	694XXMPBBZ	699TBBBZ
692MPBBZ	695MPBBZ	N/A
692XMPBBZ	695XMPBBZ	

## Stainless Steel Finish

691MSS	694MSS	695RCDMSS
691XMSS	694XMSS	698MSS
691RCDMSS	694XXMSS	699TBMSS
692MSS	695MSS	N/A
692XMSS	695XMSS	

## Plastic Finish

(Available in white only)

691C#	694C#	N/A
691XC#	694XC#	N/A
691RDC#	694XXC#	699TBC#
692C#	695C*	699C#
692XC#	695XC#	

Switch cover plates can be used vertically or horizontally. Security screwed metal switch cover plates are available on request - an extra charge may apply.

# Available in white only

\* Available in white and black only



691MPB

691MPBBZ

691MSS

# Protected Switches and Sockets – 600 series

## RCD Protected Sockets

### 691RCD30

→ **DOUBLE SWITCHED SOCKET WITH 30mA RCD PROTECTION**



### 691RCD10

→ **DOUBLE SWITCHED SOCKET WITH 10mA RCD PROTECTION**

<b>Overall Dimensions</b>	118mm x 74mm
<b>Mounting Centres</b>	84mm
<b>Ratings</b>	Voltage 230/240V a.c. 50Hz Current 10A (socket), 20A (RCD downstream) Trip Current 30mA (691RCD30), 10mA (691RCD10) Average Trip Time 30ms
<b>Terminal Capacity</b>	Max. 2 x 2.5mm cables
<b>Metal Coverplate Options</b>	Suits 691RCDM# metal cover plates
<b>Notes</b>	Compliant with AS/NZS 3100, AS/NZS 3133, AS/NZS 3112, AS/NZS 3190. 691RCD10 available in white only Can be connected for downstream socket protection

### 695RCD30

→ **DOUBLE SWITCHED SOCKET WITH 30mA RCD PROTECTION**

### 695RCD10

→ **DOUBLE SWITCHED SOCKET WITH 10mA RCD PROTECTION**



<b>Overall Dimensions</b>	118mm x 74mm
<b>Mounting Centres</b>	84mm
<b>Ratings</b>	Voltage 230/240V a.c. 50Hz Current 10A (socket), 20A (RCD downstream) Trip Current 30mA (695RCD30), 10mA (695RCD10) Average Trip Time 30ms
<b>Terminal Capacity</b>	Max. 2 x 2.5mm cables
<b>Metal Coverplate Options</b>	Suits 695RCDM# metal cover plates
<b>Notes</b>	Compliant with AS/NZS 3100, AS/NZS 3133, AS/NZS 3112, AS/NZS 3190. 695RCD10 available in white only Can be connected for downstream socket protection

### 696RCD30

→ **PLATE MOUNTED 30mA RCD (20A)**



### 696RCD10

→ **PLATE MOUNTED 10mA RCD (20A)**

<b>Overall Dimensions</b>	118mm x 74mm
<b>Mounting Centres</b>	84mm
<b>Ratings</b>	Voltage 230/240V a.c. 50Hz Current 20A (RCD downstream) Trip Current 30mA (696RCD30), 10mA (696RCD10) Average Trip Time 30ms
<b>Terminal Capacity</b>	Max. 2 x 2.5mm cables
<b>Metal Coverplate Options</b>	Suits 686M# metal cover plates
<b>Notes</b>	Compliant with AS/NZS 3100, AS/NZS 3133, AS/NZS 3112, AS/NZS 3190. 696RCD10 available in white only. Can be connected for downstream socket protection

### 675HRCD30

→ **RCD PROTECTED SOCKET AND SHAVER SOCKET**



<b>Overall Dimensions</b>	118mm x 145mm
<b>Mounting Centres</b>	84mm
<b>Ratings</b>	Voltage 230/240V a.c. 50Hz Current 10A (socket), 20A (RCD downstream) Trip Current 30mA Average Trip Time 30ms
<b>Shaver Socket Ratings</b>	Voltage 230/240V a.c. primary with 240/115V a.c. secondary Current 20VA max
<b>Metal Coverplate Options</b>	Not available
<b>Notes</b>	Comes complete with 149 flush box. Available in white only. Provides RCD protection to downstream sockets.





## Shaver Socket

675

### UNIVERSAL SHAVER SOCKET



<b>Overall Dimensions</b>	118mm x 74mm	
<b>Mounting Centres</b>	84mm	
<b>Ratings</b>	Voltage	230/240V a.c. primary with 240/115V a.c. secondary
	Current	20VA max
<b>Metal Coverplate Options</b>	Suits 686M# metal cover plates	
<b>Notes</b>	Double insulated. Vertical or horizontal mounting. Switches on when plug is inserted.	

## Thermal Protected Double Sockets

695T

### THERMAL PROTECTED DOUBLE SOCKET - 10A



Using electronic sensing Celcitect™ technology the thermal socket outlet constantly monitors the current flow and voltage of any device that is plugged in, as well as the resulting temperature of the socket outlet itself. Over temperature protection will occur past 75°C, and combine this with over current protection for an overload situation, it provides for a new level of electrical safety.

#### Features

- Over temperature protection
- Over current protection
- Double pole switching
- Safety shuttered socket outlets

<b>Overall Dimensions</b>	118mm x 74mm	
<b>Mounting Centres</b>	84mm	
<b>Ratings</b>	Voltage	250V a.c. 50Hz
	Current	10A per socket max / 16A total loading
<b>Terminal Capacity</b>	Max. 2 x 2.5mm cables	
<b>Metal Coverplate Options</b>	No metal cover plates available	
<b>Notes</b>	This socket is not an RCD and does not replace one.	

## Surge Protected Double Socket Outlets

600SM in 692X

### SURGE PROTECTED DOUBLE SWITCHED SOCKET



600SM in 695X

### SURGE PROTECTED DOUBLE SWITCHED SOCKET



<b>Overall Dimensions</b>	118mm x 74mm	
<b>Mounting Centres</b>	84mm	
<b>Ratings</b>	Supply Voltage	230/240V a.c. 50Hz
	Current	10A (socket)
	Maximum Continual Voltage	275V a.c. 50Hz
	Maximum Discharge Current	8kA (once, 8/20μS)
	Maximum Energy Absorption	151J (2ms)
<b>Terminal Capacity</b>	Max. 2 x 2.5mm cables	
<b>Metal Coverplate Options</b>	Suits 692XM# or 695XM# metal cover plates	
<b>Notes</b>	Order as 600SM x 1, 692X or 695X x 1.	

# Switched Sockets – 600 series

## Vertical Switched Sockets

**691**

### → SINGLE SWITCHED SOCKET - 10A



Overall Dimensions	118mm x 74mm
Mounting Centres	84mm
Ratings	Voltage 230/240V a.c. 50Hz Current 10A
Terminal Capacity	Max. 2 x 2.5mm cables
Metal Coverplate Options	Suits 691M# metal cover plates

**691/15**

### → SINGLE SWITCHED SOCKET - 15A



Overall Dimensions	118mm x 74mm
Mounting Centres	84mm
Ratings	Voltage 230/240V a.c. 50Hz Current 15A
Terminal Capacity	Max. 2 x 2.5mm cables
Metal Coverplate Options	Suits 691M# metal cover plates

**691X**

### → SINGLE SWITCHED SOCKET - 10A WITH REMOVABLE EXTRA SWITCH - 20A



Overall Dimensions	118mm x 74mm
Mounting Centres	84mm
Ratings	Voltage 230/240V a.c. 50Hz Current 10A (socket), 20A / 16AX (extra switch)
Terminal Capacity	Max. 2 x 2.5mm cables
Metal Coverplate Options	Suits 691XM# metal cover plates

**692**

### → DOUBLE SWITCHED SOCKET - 10A



Overall Dimensions	118mm x 74mm
Mounting Centres	84mm
Ratings	Voltage 230/240V a.c. 50Hz Current 10A
Terminal Capacity	Max. 2 x 2.5mm cables
Metal Coverplate Options	Suits 692M# metal cover plates

**691R**

### → SINGLE SWITCHED SOCKET - 10A WITH ROUND EARTH PIN



Overall Dimensions	118mm x 74mm
Mounting Centres	84mm
Ratings	Voltage 230/240V a.c. 50Hz Current 10A
Terminal Capacity	Max. 2 x 2.5mm cables
Metal Coverplate Options	Suits 691M# metal cover plates

**692X**

### → DOUBLE SWITCHED SOCKET - 10A WITH REMOVABLE EXTRA SWITCH - 20A



Overall Dimensions	118mm x 74mm
Mounting Centres	84mm
Ratings	Voltage 230/240V a.c. 50Hz Current 10A (socket), 20A / 16AX (extra switch)
Terminal Capacity	Max. 2 x 2.5mm cables
Metal Coverplate Options	Suits 692XM# metal cover plates



## Vertical Switched Sockets

### 692R



#### DOUBLE SWITCHED SOCKET - 10A WITH ROUND EARTH PIN



Overall Dimensions	118mm x 74mm
Mounting Centres	84mm
Ratings	Voltage 230/240V a.c. 50Hz Current 10A
Terminal Capacity	Max. 2 x 2.5mm cables
Metal Coverplate Options	Suits 692M# metal cover plates

### 692ID



#### DOUBLE SWITCHED SOCKET - 10A WITH CIRCUIT ID FACILITY



Overall Dimensions	118mm x 74mm
Mounting Centres	84mm
Ratings	Voltage 230/240V a.c. 50Hz Current 10A
Terminal Capacity	Max. 2 x 2.5mm cables
Metal Coverplate Options	Suits 692XM# metal cover plates
Notes	Opaque ID cap (supplied) can be engraved, or alternatively a label can be printed and fitted to a transparent ID cap (supplied).

### 691X



#### SINGLE SWITCHED SOCKET - 10A WITH REMOVABLE EXTRA SWITCH - 20A



Overall Dimensions	118mm x 74mm
Mounting Centres	84mm
Ratings	Voltage 230/240V a.c. 50Hz Current 10A (socket), 20A / 16AX (extra switch)
Terminal Capacity	Max. 2 x 2.5mm cables
Metal Coverplate Options	Suits 691XM# metal cover plates

### 692/15



#### DOUBLE SWITCHED SOCKET - 15A



Overall Dimensions	118mm x 74mm
Mounting Centres	84mm
Ratings	Voltage 230/240V a.c. 50Hz Current 15A
Terminal Capacity	Max. 2 x 2.5mm cables
Metal Coverplate Options	Suits 692M# metal cover plates

### 692P



#### DOUBLE SWITCHED SOCKET - 10A WITH 'RCD PROTECTED' INDICATOR



Overall Dimensions	118mm x 74mm
Mounting Centres	84mm
Ratings	Voltage 230/240V a.c. 50Hz Current 10A
Terminal Capacity	Max. 2 x 2.5mm cables
Metal Coverplate Options	Suits 692XM# metal cover plates
Notes	Amber neon power available indicator with 'RCD PROTECTED' printing

# Switched Sockets – 600 series

## Horizontal Switched Sockets

**694**

### → SINGLE SWITCHED SOCKET - 10A



Overall Dimensions	118mm x 74mm
Mounting Centres	84mm
Ratings	Voltage 230/240V a.c. 50Hz Current 10A
Terminal Capacity	Max. 2 x 2.5mm cables
Metal Coverplate Options	Suits 694M# metal cover plates

**694/15**

### → SINGLE SWITCHED SOCKET - 15A



Overall Dimensions	118mm x 74mm
Mounting Centres	84mm
Ratings	Voltage 230/240V a.c. 50Hz Current 15A
Terminal Capacity	Max. 2 x 2.5mm cables
Metal Coverplate Options	Suits 694M# metal cover plates

**694X**

### → SINGLE SWITCHED SOCKET - 10A WITH REMOVABLE EXTRA SWITCH - 20A



Overall Dimensions	118mm x 74mm
Mounting Centres	84mm
Ratings	Voltage 230/240V a.c. 50Hz Current 10A (socket), 20A / 16AX (extra switch)
Terminal Capacity	Max. 2 x 2.5mm cables
Metal Coverplate Options	Suits 694XM# metal cover plates

**695**

### → DOUBLE SWITCHED SOCKET - 10A



Overall Dimensions	118mm x 74mm
Mounting Centres	84mm
Ratings	Voltage 230/240V a.c. 50Hz Current 10A
Terminal Capacity	Max. 2 x 2.5mm cables
Metal Coverplate Options	Suits 695M# metal cover plates

**694XX**

### → SINGLE SWITCHED SOCKET - 10A WITH TWO REMOVABLE EXTRA SWITCHES - 20A



Overall Dimensions	118mm x 74mm
Mounting Centres	84mm
Ratings	Voltage 230/240V a.c. 50Hz Current 10A (socket), 20A / 16AX (extra switches)
Terminal Capacity	Max. 2 x 2.5mm cables
Metal Coverplate Options	Suits 694XXM# metal cover plates

**695X**

### → DOUBLE SWITCHED SOCKET - 10A WITH REMOVABLE EXTRA SWITCH - 20A



Overall Dimensions	118mm x 74mm
Mounting Centres	84mm
Ratings	Voltage 230/240V a.c. 50Hz Current 10A (socket), 20A / 16AX (extra switch)
Terminal Capacity	Max. 2 x 2.5mm cables
Metal Coverplate Options	Suits 695XM# metal cover plates



## Horizontal Switched Sockets

**695R**



**DOUBLE SWITCHED  
SOCKET - 10A WITH  
ROUND EARTH PIN**



Overall Dimensions	118mm x 74mm
Mounting Centres	84mm
Ratings	Voltage 230/240V a.c. 50Hz Current 10A
Terminal Capacity	Max. 2 x 2.5mm cables
Metal Coverplate Options	Suits 695M# metal cover plates

**695ID**



**DOUBLE SWITCHED  
SOCKET - 10A WITH  
CIRCUIT ID FACILITY**



Overall Dimensions	118mm x 74mm
Mounting Centres	84mm
Ratings	Voltage 230/240V a.c. 50Hz Current 10A
Terminal Capacity	Max. 2 x 2.5mm cables
Metal Coverplate Options	Suits 695XM# metal cover plates
Notes	Opaque ID cap (supplied) can be engraved, or alternatively a label can be printed and fitted to a transparent ID cap (supplied).

**695N**



**DOUBLE SWITCHED SOCKET -  
10A WITH NEON INDICATORS**



Overall Dimensions	118mm x 74mm
Mounting Centres	84mm
Ratings	Voltage 230/240V a.c. 50Hz Current 10A
Terminal Capacity	Max. 2 x 2.5mm cables
Metal Coverplate Options	Suits 695M# metal cover plates
Notes	Amber neon indicators in switches give power on indication

**695/15**



**DOUBLE SWITCHED  
SOCKET - 15A**



Overall Dimensions	118mm x 74mm
Mounting Centres	84mm
Ratings	Voltage 230/240V a.c. 50Hz Current 15A
Terminal Capacity	Max. 2 x 2.5mm cables
Metal Coverplate Options	Suits 695M# metal cover plates

**695P**



**DOUBLE SWITCHED  
SOCKET - 10A WITH 'RCD  
PROTECTED' INDICATOR**



Overall Dimensions	118mm x 74mm
Mounting Centres	84mm
Ratings	Voltage 230/240V a.c. 50Hz Current 10A
Terminal Capacity	Max. 2 x 2.5mm cables
Metal Coverplate Options	Suits 695XM# metal cover plates
Notes	Amber neon power available indicator with 'RCD PROTECTED' printing

# Switched Sockets – 600 series

## Worktop Switched Sockets

698

### → SINGLE SWITCHED SOCKET - 10A



Overall Dimensions	48mm x 100mm
Mounting Centres	80mm
Ratings	Voltage 230/240V a.c. 50Hz Current 10A
Terminal Capacity	Max. 2 x 2.5mm cables
Metal Coverplate Options	Suits 698M# metal cover plates

699

### → DOUBLE SWITCHED SOCKET - 10A



Overall Dimensions	48mm x 170mm
Mounting Centres	150mm
Ratings	Voltage 230/240V a.c. 50Hz Current 10A
Terminal Capacity	Max. 2 x 2.5mm cables
Metal Coverplate Options	Not available

698R

### → SINGLE SWITCHED SOCKET - 10A WITH ROUND EARTH PIN



Overall Dimensions	48mm x 100mm
Mounting Centres	80mm
Ratings	Voltage 230/240V a.c. 50Hz Current 10A
Terminal Capacity	Max. 2 x 2.5mm cables
Metal Coverplate Options	Suits 698M# metal cover plates

699TB

### → DOUBLE SWITCHED SOCKET - 10A WITH SEPARATE BASES



Overall Dimensions	48mm x 170mm
Mounting Centres	150mm
Ratings	Voltage 230/240V a.c. 50Hz Current 10A
Terminal Capacity	Max. 2 x 2.5mm cables
Metal Coverplate Options	Suits 699TBM# metal cover plates

698/15

### → SINGLE SWITCHED SOCKET - 15A



Overall Dimensions	48mm x 100mm
Mounting Centres	80mm
Ratings	Voltage 230/240V a.c. 50Hz Current 15A
Terminal Capacity	Max. 2 x 2.5mm cables
Metal Coverplate Options	Suits 698M# metal cover plates



# Unswitched Sockets – 600 series

## Worktop Switched Sockets

### 699TBR

#### → DOUBLE SWITCHED SOCKET - 10A WITH ROUND EARTH PIN

Overall Dimensions	48mm x 170mm
Mounting Centres	150mm
Ratings	Voltage 230/240V a.c. 50Hz Current 10A
Terminal Capacity	Max. 2 x 2.5mm cables
Metal Coverplate Options	Suits 699TBM# metal cover plates



## Horizontal Unswitched Socket

### 693/2

#### → DOUBLE HORIZONTAL UNSWITCHED SOCKET - 10A

Overall Dimensions	74mm x 118mm
Mounting Centres	84mm
Ratings	Voltage 230/240V a.c. 50Hz Current 10A
Terminal Capacity	Max. 2 x 2.5mm cables
Metal Coverplate Options	Not available
Notes	Separate bases allow for remote individual control of connected devices.



### 699TB/15

#### → DOUBLE SWITCHED SOCKET - 15A WITH SEPARATE BASES

Overall Dimensions	48mm x 170mm
Mounting Centres	150mm
Ratings	Voltage 230/240V a.c. 50Hz Current 10A
Terminal Capacity	Max. 2 x 2.5mm cables
Metal Coverplate Options	Suits 699TBM# metal cover plates



# Switched Sockets – 600 series

## Quad Socket Outlets

**641**



### 4-WAY SWITCHED SOCKET - 10A



Overall Dimensions	194mm x 81mm
Mounting Centres	84mm
Ratings	Voltage 230/240V a.c. 50Hz Current 10A
Terminal Capacity	Max. 2 x 2.5mm cables
Metal Coverplate Options	Not available

**644**



### 4-WAY SWITCHED SOCKET - 10A



Overall Dimensions	79mm x 191mm
Mounting Centres	84mm
Ratings	Voltage 230/240V a.c. 50Hz Current 10A
Terminal Capacity	Max. 2 x 2.5mm cables
Metal Coverplate Options	Not available

**641P**



### 4-WAY SWITCHED SOCKET - 10A WITH 'RCD ON' INDICATOR



Overall Dimensions	194mm x 81mm
Mounting Centres	84mm
Ratings	Voltage 230/240V a.c. 50Hz Current 10A
Terminal Capacity	Max. 2 x 2.5mm cables
Metal Coverplate Options	Not available
Notes	Available in white only

**644P**



### 4-WAY SWITCHED SOCKET - 10A WITH 'RCD ON' INDICATOR



Overall Dimensions	79mm x 191mm
Mounting Centres	84mm
Ratings	Voltage 230/240V a.c. 50Hz Current 10A
Terminal Capacity	Max. 2 x 2.5mm cables
Metal Coverplate Options	Not available
Notes	Available in white only

**641/15**



### 4-WAY SWITCHED SOCKET - 10A WITH 1 x 15A OUTLET



Overall Dimensions	194mm x 81mm
Mounting Centres	84mm
Ratings	Voltage 230/240V a.c. 50Hz Current 10A (x3), 15A (x1)
Terminal Capacity	Max. 2 x 2.5mm cables
Metal Coverplate Options	Not available
Notes	Available in white only

**644/15**



### 4-WAY SWITCHED SOCKET - 10A WITH 1 x 15A OUTLET



Overall Dimensions	79mm x 191mm
Mounting Centres	84mm
Ratings	Voltage 230/240V a.c. 50Hz Current 10A (x3), 15A (x1)
Terminal Capacity	Max. 2 x 2.5mm cables
Metal Coverplate Options	Not available
Notes	Available in white only

# Telephone and TV Outlets – 600 series

## Telephone and TV Outlets

### 617BT2

#### → 2-WIRE TELEPHONE OUTLET PLATE



Overall Dimensions	118mm x 74mm
Mounting Centres	84mm
Metal Coverplate Options	Suits 612M# metal coverplates
Notes	Standard 2-wire, 2-contact telephone outlet. IDC terminations

### 628

#### → TELEVISION OUTLET



Overall Dimensions	118mm x 74mm
Mounting Centres	84mm
Metal Coverplate Options	Suits 681M# metal coverplates
Notes	75 ohm PAL Belling-Lee outlet with clamp terminals

### 617BT2/2

#### → DOUBLE 2-WIRE TELEPHONE OUTLET PLATE



Overall Dimensions	118mm x 74mm
Mounting Centres	84mm
Metal Coverplate Options	Suits 612M# metal coverplates
Notes	Standard 2-wire, 2-contact telephone outlets. IDC terminations

### 628F

#### → TELEVISION OUTLET WITH REAR 'F' CONNECTION



Overall Dimensions	118mm x 74mm
Mounting Centres	84mm
Metal Coverplate Options	Suits 681M# metal coverplates
Notes	75 ohm PAL Belling-Lee outlet with rear 'F' cable connection

# Switch Modules – 600 series

## Standard Switch Modules

### 681M20

#### → SWITCH MODULE



<b>Poles / Ways</b>	1 Pole / 2 Way
<b>Ratings</b>	Voltage 250V a.c. 50Hz Current 20A / 16AX / M60 (AS/NZS 3133)
<b>Terminal Capacity</b>	Max. 4 x 1.5mm, or 2 x 2.5mm cables

### 681M20P

#### → MOMENTARY SWITCH MODULE



<b>Poles / Ways</b>	1 Pole / 2 Way
<b>Ratings</b>	Voltage 250V a.c. 50Hz Current 20A / 16AX / M60 (AS/NZS 3133)
<b>Terminal Capacity</b>	Max. 4 x 1.5mm, or 2 x 2.5mm cables
<b>Notes</b>	Momentary 'PRESS' action
<b>681M20B</b>	As per 681M20P except printed 'BELL'
<b>681M20PB</b>	As per 681M20P except rocker unprinted.
<b>681M20R</b>	As per 681M20P except printed 'RESET'

## Dedicated Switch Modules

### 681M20

#### → DEDICATED SWITCH MODULES

<b>Ratings</b>	250V a.c., 50Hz, 20A 16AX / M60 (AS/NZS 3133), 2-Way.
----------------	---



681M20AC

681M20L

681M20LO

681M20WT

<b>681M20AC</b>	Marked 'AIR CON'.
<b>681M20A/M</b>	Marked 'AUTO/MANUAL'.
<b>681M20D</b>	Marked 'DINING'.
<b>681M20DR</b>	Marked 'DOOR'.
<b>681M20DW</b>	Marked 'DISHWASHER'.
<b>681M20DY</b>	Marked 'DRYER'.
<b>681M20F</b>	Marked 'FAN'.
<b>681M20FG</b>	Marked 'FRIDGE'.
<b>681M20F/R</b>	Marked 'FORWARD/REVERSE'.
<b>681M20G</b>	Marked 'GAS'.
<b>681M20GN</b>	Marked 'GARDEN'.
<b>681M20H</b>	Marked 'HEAT'.
<b>681M20HD</b>	Marked 'HOOD'.
<b>681M20HLF</b>	Marked 'HIGH/FAN/LOW'.

<b>681M20I/O</b>	Marked 'ON/OFF'.
<b>681M20L</b>	Marked 'LIGHT'.
<b>681M20LO</b>	Marked 'LOUNGE'.
<b>681M20MR</b>	Marked 'MIRROR'.
<b>681M20MW</b>	Marked 'MICROWAVE'.
<b>681M20O</b>	Marked 'OUTSIDE'.
<b>681M20PL</b>	Marked 'POOL'.
<b>681M20PU</b>	Marked 'PUMP'.
<b>681M20S</b>	Marked 'SPA'.
<b>681M20SE</b>	Marked 'SENSOR'.
<b>681M20ST</b>	Marked 'STAIRS'.
<b>681M20TV</b>	Marked 'TV'.
<b>681M20WH</b>	Marked 'WASH'.
<b>681M20WT</b>	Marked 'WASTE'.



## Standard Switch Modules

### 678M16

#### → INTERMEDIATE SWITCH MODULE



Ratings	250V a.c., 50Hz, 16A/ 8AX (AS/NZS 3133)
---------	--

### 681MT16

#### → PUSH BUTTON SWITCH MODULE



Poles / Ways	1 Pole / 2 Way
Ratings	Voltage 250V a.c. 50Hz Current 16A / 16AX (AS/NZS 3133)
Terminal Capacity	Maximum 4 x 1.5mm <sup>2</sup> or 2 x 2.5mm <sup>2</sup> cables
Notes	Prefitted with rewirable blue LED indicator.

### 687M10

#### → DOUBLE POLE SWITCH MODULE



Ratings	250V a.c., 50Hz, 10A (AS/NZS 3133)
---------	---------------------------------------

### 681MT10PB

#### → MOMENTARY PUSH BUTTON SWITCH MODULE



Poles / Ways	1 Pole / 2 Way
Ratings	AC Voltage 250V a.c. 50Hz Current 10A / 10AX (AS/NZS 3133) DC Voltage 24V d.c. Current 10A resistive
Terminal Capacity	Maximum 4 x 1.5mm <sup>2</sup> or 2 x 2.5mm <sup>2</sup> cables
Notes	Prefitted with rewirable blue LED indicator.

### 680M20N

#### → SWITCH MODULE WITH NEON INDICATOR



Poles / Ways	1 Pole / 1 Way
Ratings	Voltage 250V a.c. 50Hz Current 20A / 16AX / M60 (AS/NZS 3133)
Terminal Capacity	Max. 4 x 1.5mm, or 2 x 2.5mm cables
Notes	Neon flying leads can be connected to stay permanently on or to indicate when switch is on.

# Switch Modules – 600 series

## Standard Switch Modules

**680M32**

→ **SWITCH MODULE**



<b>Ratings</b>	250V a.c., 50Hz., Single Pole, 1-Way, 32A, 20AX (AS/NZS 3133), M180.
<b>Terminals accommodate</b>	2 x 6mm <sup>2</sup> conductors.
<b>680M32AC</b>	Marked 'AIR CON'.
<b>680M32H</b>	Marked 'HOB'.
<b>680M32I/O</b>	Marked 'ON/OFF'.
<b>680M32O</b>	Marked 'OVEN'.
<b>680M32R</b>	Marked 'RANGE'.

## Rotary Switch Modules

**687M3**

→ **3-POSITION ROTARY MODULE**



**687M4**

→ **4-POSITION ROTARY MODULE**

<b>Positions</b>	0, 1, 2	
<b>687M3A/M</b>	<b>3-POSITION ROTARY MODULE</b>	AUTO, OFF, MAN
<b>687M3I/II</b>	<b>3-POSITION ROTARY MODULE</b>	I, 0, II
<b>687M4</b>	<b>4-POSITION ROTARY MODULE</b>	0, 1, 2, 3
<b>687M4F</b>	<b>4-POSITION ROTARY MODULE</b>	0, 1, 2, 3 Dial marked 'Fan'.

## Switch Modules with Hinged Lids

**681M16HF**

→ **SWITCH MODULE**



<b>Ratings</b>	250V a.c., 50Hz, 16A/ 16AX/ M50 (AS/NZS 3133), 2-Way.
<b>681M16HFAL*</b>	As for 681M16HF but with hinged, protective lid marked 'ALARM'.
<b>681M16HFCL*</b>	As for 681M16HF but Available in white only with clear, hinged, protective lid. Card supplied for ID purposes.
<b>681M16HFF*</b>	As for 681M16HF but with hinged, protective lid marked 'FRIDGE'.
<b>681M16HFMW*</b>	As for 681M16HF but with hinged, protective lid marked 'MICROWAVE'.
<b>681M16HFS*</b>	As for 681M16HF but with hinged, protective lid marked 'SENSOR'.
<b>Notes</b>	*Available in white only.

## Tactile Switch Modules

**680TMPB**

→ **TACTILE SWITCH MODULE**



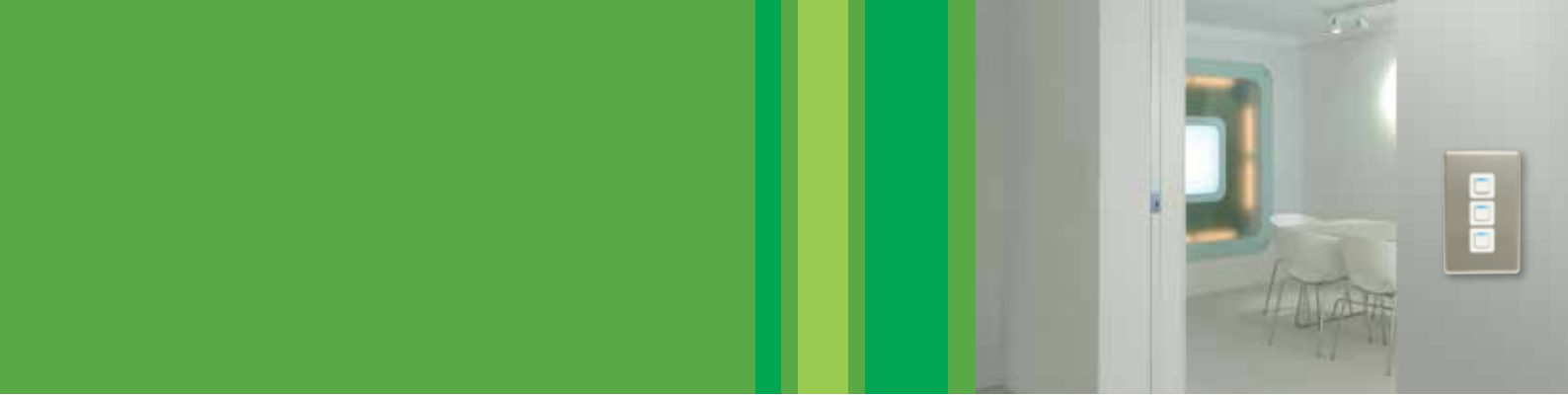
<b>Rating</b>	24V d.c., 10mA. 12V d.c., 50mA.
<b>Feature</b>	Momentary contact switch, normally open.

**680TMNPB**

→ **ILLUMINATED TACTILE SWITCH MODULE**



<b>Rating</b>	24V d.c., 10mA. 12V d.c., 50mA.
<b>Feature</b>	Momentary contact switch, normally open. Separate terminals allow independent wiring of LED. Available with RED or GREEN LED. Module available in white only.




**Pull Cord Switch Modules**

**Permanent Connection Module**

**681M16PS**


→ **PULL CORD SWITCH MODULE**



<b>Rating</b>	250V a.c., 50Hz, 16A/ 16AX/ M50 (AS/NZS 3133), 10AX 1-Way/2-Way.
<b>Notes</b>	Module available in white only.

**651M2**

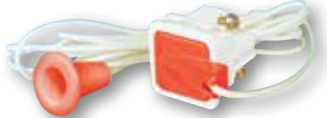
→ **PERMANENT CONNECTION MODULE**



<b>Rating</b>	230V - 240V a.c., 50Hz, 16A.
<b>Notes</b>	'Bell Mouth' cable entry accommodates flexible cords up to 10mm diameter.

**673MM**

→ **MOMENTARY CONTACT PULL CORD SWITCH MODULE**



<b>Rating</b>	24V, 12A.
<b>Notes</b>	N/O - N/C. White module with red button and actuator.



# Switch Modules – 600 series

## Modules

### 100MPIR

#### → PASSIVE INFRA-RED SENSOR MODULE

Ideal for controlling stairway and restroom lighting - no contact required.  
Increase your energy efficiency by powering lighting only as and when required.

<b>Ratings</b>	Voltage	230/240V a.c. 50Hz
	Load	3A resistive (use relay for larger loads)
	Field of View	100° Horiz; 82° Vert
	Detection range	5m forward arc
<b>Terminal Capacity</b>	Flying leads	
<b>Notes</b>	Adjustable LUX (5-2000) and TIME settings (10s to 15m). Supplied with interchangeable coloured faceplates plus white mask.	



### 648TM

#### → PROGRAMMABLE TIME DELAY MODULE

The one stop solution for controlling power to lights and appliances - ideal for increasing energy efficiency in an installation. Provide timed lighting for bathrooms, wardrobes or towel rails. Blue LED gives clear indication of timing status.

<b>Ratings</b>	Voltage	230/240V a.c. 50Hz
	Load	3A resistive (use relay for larger loads)
<b>Terminal Capacity</b>	Flying leads	
<b>Notes</b>	Installer selectable time from 15s to 120min. Three operation modes: On delay (with manual override) / On delay (with no override) / Off Delay (with manual override). Supplied with interchangeable white and black faceplates.	



### 600RM

#### → RELAY MODULE

Perfect for adding additional functionality to other devices, or for increasing load capability. Add extra output circuits to key card or key switches.  
Increase the load capability of sensors or timers.

<b>Ratings</b>	Voltage	230/240V a.c. 50Hz
	Load	16A / 6AX
	Outputs	NC and NO outputs
<b>Terminal Capacity</b>	Flying leads (coil), 2 x 2.5mm <sup>2</sup> cable max (load)	
<b>Notes</b>	Supplied with interchangeable coloured faceplates. Can be cable behind gridplate. Features aperture behind faceplate for status indicator (optional - for use with white faceplate only).	





## Dimmers



	634LM	624TM	654M
Power Rating	450VA	450VA	450VA
Load Type Compatibility	Medium	Medium	High
Resistive	✓	✓	✓
Inductive	✓	✗	✓
Capacitive	✗	✓	✓
Small Motors	✗	✗	✓
Short Circuit Protection	✗	✗	✓
Derating Factor for Multigang Applications	25% (per additional mech per plate)	25% (per additional mech per plate)	25% (per additional mech per plate)
Soft Start Feature	✓	✓	✓
Voltage Stability	✓	✓	✓
Frequency Stability	✓	✓	✓
Immunity to Ripple Signal Injection	✓	✓	✓
Over-current Compensation	✓	✓	✓
Over-temperature Compensation	✓	✓	✓
Thermal Shutdown	✗	✗	✓
“Safe” in all modes operation	✓	✓	✓

# Switch Modules – 600 series

## Surge Protection Module

600SM

### → SURGE PROTECTION MODULE



<b>Ratings</b>	Nominal Voltage	250V a.c. 50Hz
	Maximum Continual Voltage	275V a.c. 50Hz
	Maximum Discharge Current	8kA (once, 8/20µS)
	Maximum Clamping Voltage	710V @ 100A
	Normal Power Consumption	<1W
	Maximum Energy Absorption	151J (2ms)
<b>Terminal Capacity</b>	Flying leads (x3)	
<b>Notes</b>	Provides upstream and downstream fine surge protection for outlets on the same circuit. Supplied with interchangeable white and black faceplates. Blue indicator shows protection status - protected only when lit.	

## Fan Speed Control Modules

625FM

### → ROTARY FAN SPEED CONTROLLER MODULE - 500W



<b>Dimming Method</b>	Leading edge phase control	
<b>Ratings</b>	Voltage	230/240V a.c. 50Hz
	Maximum Load	500W
	Minimum Load	40W
<b>Load Suitability</b>	Incandescent	Not suitable
	240V Halogen Lighting	Not suitable
	Low Voltage Lighting - Electronic Transformers	Not suitable
	Low Voltage Lighting - Wire Wound Transformers	Not suitable
	Fluorescents or Loads using Ballast or Inductors	Not suitable
	Motor Speed Control	500W
<b>Notes</b>	Shaded pole or split phase motors only. Includes Thermal overload protection and kick-start feature	

## Fan Speed Control Modules

625C3M

### → 3-SPEED FAN CONTROLLER MODULE - 100VA



<b>Dimming Method</b>	Leading edge phase control	
<b>Ratings</b>	Voltage	230/240V a.c. 50Hz
	Load	3 speed control for ceiling sweep fans up to 100VA. Uses 2µF and 3µF capacitors to control fan speed.
<b>Terminal Capacity</b>	Max. 4 x 1.5mm, or 2 x 2.5mm cables	
<b>Notes</b>	Two part module occupies two apertures in grid plate.	

625C3/1M

### → 3-SPEED FAN CONTROLLER MODULE - 100VA



<b>Dimming Method</b>	Leading edge phase control	
<b>Ratings</b>	Voltage	230/240V a.c. 50Hz
	Load	3 speed control for ceiling sweep fans up to 100VA. Uses 1µF and 2µF capacitors to control fan speed.
<b>Terminal Capacity</b>	Max. 4 x 1.5mm, or 2 x 2.5mm cables	
<b>Notes</b>	Two part module occupies two apertures in grid plate.	



## Communication Modules

### 617M2

#### → 2-WIRE TELEPHONE OUTLET MODULE



<b>Contacts</b>	2 Wire, 2 Contact
<b>Notes</b>	IDC Connections Two wire outlets are not compatible with 3-wire systems Approved to Telepermit PTC 226 Use IDC termination tool such as 500TT for wiring cables

### 619MM

#### → DATA JACK ADAPTOR MODULE



<b>Notes</b>	Accepts RJ45 data jacks from Clipsal or Modtap
--------------	--

### 618M

#### → BT TELEPHONE OUTLET MODULE



<b>Contacts</b>	6 Contacts, individually connectable
<b>Notes</b>	IDC Connections For PABX applications Use IDC termination tool such as 500TT for wiring cables

### 619MKC

#### → DATA JACK ADAPTOR MODULE



### 619MKLC

#### → DATA JACK ADAPTOR MODULE WITH HINGED LID



<b>Notes</b>	Accepts keystone RJ45 data jacks from Krone, Amp, Hubbell, Suttle, HPM, or Dataplus 619MKLC features hinged gravity lid to facilitate circuit ID, and protect data socket from dust when not in use.
--------------	---

### 619MD

#### → CAT 6 RJ45 MODULE



### 619MDL

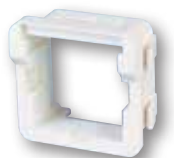
#### → CAT 6 RJ45 MODULE WITH HINGED LID



<b>Notes</b>	IDC Connections Data and voice compatible Allows for both 568A and 568B wiring options
--------------	--

### 619MAC

#### → DATA JACK ADAPTOR MODULE



### 619MALC

#### → DATA JACK ADAPTOR MODULE WITH HINGED LID



<b>Notes</b>	Accepts RJ45 data jacks from AT&T and Suttle 619MALC features hinged gravity lid to facilitate circuit ID, and protect data socket from dust when not in use.
--------------	--

# Switch Modules – 600 series

## Communication Modules

### 628MF

#### → COAXIAL CABLE SOCKET with REAR 'F' CONNECTION



<b>Rating</b>	75 Ohm. PAL type socket with 'F' connect in rear. Marked 'TV'.
<b>628MFI</b>	As for 628MF but marked 'IN'.
<b>628MFO</b>	As for 628MF but marked 'OUT'.
<b>628MFS</b>	As for 628MF but marked 'SKY'.
<b>628MFV</b>	As for 628MF but marked 'VIDEO'.

### 640MWH\*

#### → RCA A/V CONNECTION SOCKET



<b>Features</b>	Solder type terminals. Socket coloured WHITE.
<b>Notes</b>	* Available in white and black only.
<b>640MBK*</b>	As for 640MWH but socket coloured BLACK
<b>640MBL*</b>	As for 640MWH but socket coloured BLUE
<b>640MGN*</b>	As for 640MWH but socket coloured GREEN
<b>640MRD*</b>	As for 640MWH but socket coloured RED
<b>640MYL*</b>	As for 640MWH but socket coloured YELLOW

### 628M

#### → COAXIAL CABLE CONNECTION SOCKET



<b>Rating</b>	75 Ohm. PAL type socket marked 'TV'. Clamp terminals.
<b>629M</b>	As for 628M but marked 'FM'. Available in white only.

### 615MF

#### → 'F' TYPE CONNECTOR MODULE



<b>Features</b>	'F' Female/Female through connector. Available in white only.
<b>615MFTV</b>	As for 615MF but marked 'TV'. Available in white only.
<b>615MFSKY</b>	As for 615MF but marked 'SKY'. Available in white only.

### 609M

#### → TV-FM SPLITTER SOCKET MODULE



<b>Features</b>	Single coaxial connection to combined TV-FM aerial. Suits 75 Ohm coaxial cable. Comprising screw terminal for signal core and saddle clamp for earth screen. Marked 'FM' and 'TV' on respective modules. Suits 662VH and 682VH. Can be used as an outlet on master aerial systems. Available in white only.
-----------------	---

### 615MBB

#### → BANANA BINDING POST



<b>Rating</b>	12V - 28V, 10A. Suits standard banana plug. Accepts wire and forked terminal connections. Black band.
<b>615MRB</b>	As for 615MBB but with a red band.



## LexCom Home Connectors

### VDI552012

#### → LEXCOM MODULAR CONNECTION JACK



VDI552012

611M

<b>Features</b>	Wideband tool-less STP connector for use in LexCom Home Network installations.
<b>Bandwidth</b>	0-900MHz
<b>Insertion Loss</b>	<0.025dB @ 100MHz
<b>Impedance</b>	100 Ohm z
<b>611M</b>	Adaptor clip for mounting VDI552012 LexCom connectors into 600 Series module apertures.

## Blank Modules

### 600B

#### → BLANK MODULE



<b>600BST</b>	Marked 'START'. Module available in white only.
<b>600BSP</b>	Marked 'STOP'. Module available in white only.
<b>600BESP</b>	Marked 'EMERGENCY STOP'. Module available in white only.

## Communication Modules

### 616M

#### → BNC SOCKET



<b>Rating</b>	50 Ohm. Solder terminals.
<b>Notes</b>	Available in white only.

### 600ID

#### → BLANK MODULE for CIRCUIT ID



<b>Features</b>	Module comes with blank label for printing appliance details or circuit identification. A clear, clip-on cover protects the label.
-----------------	--

### 680S

#### → MODULE SHROUD



<b>Rating</b>	Flame retardant material. Insulates up to 3000V. Suits all 500 Series and 600 Designer Series modules.
<b>Notes</b>	Available grey only.

## Module Ejector

### 600ME

#### → MODULE EJECTOR



<b>Features</b>	For removing 500 Series and 600 Designer Series modules from plates. Collapses module clip-in legs simultaneously and ejects module.
<b>Notes</b>	Supplied in various colours.

# Switch Plates – 500 series

## Standard Switch Plates

**581VH**

→ **SINGLE APERTURE  
GRID PLATE**



Overall Dimensions	118mm x 74mm
Mounting Centres	84mm
Notes	Available in white only. Replacement screw caps available as Part# 500CWH

**584VH**

→ **FOUR APERTURE  
GRID PLATE**



Overall Dimensions	118mm x 74mm
Mounting Centres	84mm
Notes	Available in white only. Replacement screw caps available as Part# 500CWH

**582VH**

→ **TWO APERTURE  
GRID PLATE**



Overall Dimensions	118mm x 74mm
Mounting Centres	84mm
Notes	Available in white only. Replacement screw caps available as Part# 500CWH

**586VH**

→ **SIX APERTURE  
GRID PLATE**



Overall Dimensions	118mm x 74mm
Mounting Centres	84mm
Notes	Available in white only. Replacement screw caps available as Part# 500CWH

**583VH**

→ **THREE APERTURE  
GRID PLATE**



Overall Dimensions	118mm x 74mm
Mounting Centres	84mm
Notes	Available in white only. Replacement screw caps available as Part# 500CWH

**550VH**

→ **BLANK GRID PLATE**



Overall Dimensions	118mm x 74mm
Mounting Centres	84mm
Notes	Available in white only. Replacement screw caps available as Part# 500CWH





## Architrave Switch Plates

**561VH**



**ONE APERTURE  
ARCHITRAVE GRID PLATE**



Overall Dimensions	78mm x 32mm
Mounting Centres	62mm
Notes	Available in white only. Replacement screw caps available as Part# 500CWH Suitable for vertical or horizontal mounting

## Architrave Switch Plates

**564VH**



**FOUR APERTURE  
ARCHITRAVE GRID PLATE**

Overall Dimensions	130mm x 32mm
Mounting Centres	62mm
Notes	Available in white only. Replacement screw caps available as Part# 500CWH Suitable for vertical or horizontal mounting

**562VH**



**TWO APERTURE  
ARCHITRAVE GRID PLATE**



Overall Dimensions	78mm x 32mm
Mounting Centres	62mm
Notes	Available in white only. Replacement screw caps available as Part# 500CWH Suitable for vertical or horizontal mounting

## Worktop Switch Plates

**588VH**



**ONE APERTURE  
WORKTOP GRID  
PLATE**



Overall Dimensions	100mm x 48mm
Mounting Centres	80mm
Notes	Available in white only. Replacement screw caps available as Part# 500CWH Suitable for vertical or horizontal mounting

**563VH**



**THREE APERTURE  
ARCHITRAVE GRID PLATE**



Overall Dimensions	130mm x 32mm
Mounting Centres	62mm
Notes	Available in white only. Replacement screw caps available as Part# 500CWH Suitable for vertical or horizontal mounting

**589VH**



**TWO APERTURE  
WORKTOP GRID  
PLATE**



Overall Dimensions	100mm x 48mm
Mounting Centres	80mm
Notes	Available in white only. Replacement screw caps available as Part# 500CWH Suitable for vertical or horizontal mounting

# Switch Plates – 500 series

## Surface Switch Plates

**571R**

→ **ONE APERTURE  
SURFACE PLATE**



Overall Dimensions	56mm diameter
Mounting Centres	40mm
Notes	Available in white only. Replacement screw caps available as Part# 500CWH

**573R**

→ **ONE APERTURE  
SURFACE PLATE**



Overall Dimensions	66mm diameter
Mounting Centres	50mm at 45°
Notes	Available in white only. Replacement screw caps available as Part# 500CWH

## Surface Mounting Enclosure

**574E**

→ **SURFACE MOUNTING  
ENCLOSURE**



Overall Dimensions	79mm x 52mm
Mounting Centres	Surface mount
Notes	Available in white only.

## Telephone Switch Plates

**514VH91**

→ **ONE APERTURE  
VGA GRID PLATE**



Overall Dimensions	118mm x 74mm
Mounting Centres	84mm
Notes	Single DB9 / High Density DB15 aperture accepts VGA or serial cable connections.

**514VH92**

→ **TWO APERTURE  
VGA GRID PLATE**



Overall Dimensions	118mm x 74mm
Mounting Centres	84mm
Notes	Double DB9 / High Density DB15 apertures accept VGA or serial cable connections.

**524VH**

→ **TELEPHONE COVER  
PLATE**



Overall Dimensions	118mm x 74mm
Mounting Centres	84mm
Notes	Plate fits over Telecom square plate to allow conversion to standard plate size



## Surface Switch

571



### ROUND SURFACE SWITCH KIT



Overall Dimensions	56mm diameter
Mounting Centres	40mm
Ratings	Voltage 250V a.c. 50Hz Current 20A / 16AX / M60 (AS/NZS 3133)
Notes	Available in white only. Consists of 571R grid plate, 681M20 switch module, and 530 mounting block.

## Ceiling Switch

573



### PULL CORD SWITCH



Overall Dimensions	66mm diameter
Mounting Centres	50mm at 45°
Poles / Ways	1 Pole / 2 Way
Ratings	Voltage 250V a.c. 50Hz Current 16A / 16AX / M50 (AS/NZS 3133)
Terminal Capacity	Maximum of 4 x 1.5mm <sup>2</sup> or 2 x 1.5mm <sup>2</sup> cables
Notes	Available in white only. Fitted with 681M16PS pull cord switch module

546



### UNIVERSAL TIME SWITCH



Overall Dimensions	118mm x 74mm
Mounting Centres	84mm
Poles / Ways	1 Pole / 1 Way
Ratings	Voltage 230/240V a.c. 50Hz Current 10A / 10AX
Terminal Capacity	Maximum of 4 x 1.5mm <sup>2</sup> or 2 x 1.5mm <sup>2</sup> cables
Notes	Available in white only. Installer programmable between 1s and 31h 30m. Remote switch compatible. Delay from ON, or delay from OFF modes. Delay from OFF from remote switch only.

## Surface Switch

572



### HOT WATER SYSTEM SWITCH



Overall Dimensions	66mm diameter
Mounting Centres	50mm at 45°
Poles / Ways	1 Pole / 2 Way
Ratings	Voltage 250V a.c. 50Hz Current 20A / 16AX / M60 (AS/NZS 3133)
Terminal Capacity	Maximum of 4 x 1.5mm <sup>2</sup> or 2 x 2.5mm <sup>2</sup> cables
Notes	Available in white only. Fitted with 681M20HWS switch module.

574



### HOT WATER SYSTEM SWITCH



Overall Dimensions	79mm x 52mm
Mounting Centres	Surface mount
Poles / Ways	1 Pole / 2 Way
Ratings	Voltage 250V a.c. 50Hz Current 20A / 16AX / M60 (AS/NZS 3133)
Notes	Available in white only. Fitted with 681M20HWS switch module. Clamp provided for conduit and flexible cord. 2 x 501T terminals included.

548BS



### SOLAR WATER HEATER BOOSTER SWITCH



Overall Dimensions	118mm x 74mm
Mounting Centres	84mm
Poles / Ways	1 Pole / 1 Way
Ratings	Voltage 230/240V a.c. 50Hz Current 20A (4800W max) Power consumption 1.6W at 240V a.c.
Terminal Capacity	Maximum of 4 x 1.5mm <sup>2</sup> or 2 x 1.5mm <sup>2</sup> cables
Notes	Available in white only. Operates as a voltage held switching relay - ideal for providing a boost of electric heating to a solar water heating system. See install sheet on website for further details.

# Sockets – 500 series

## Switched Sockets

**591F**

→ **SINGLE SWITCHED SOCKET - 10A**



Overall Dimensions	118mm x 74mm
Mounting Centres	84mm
Ratings	Voltage 230/240V a.c. 50Hz Current 10A
Terminal Capacity	Max. 2 x 2.5mm cables

**595F**

→ **DOUBLE SWITCHED SOCKET - 10A**



Overall Dimensions	74mm x 118mm
Mounting Centres	84mm
Ratings	Voltage 230/240V a.c. 50Hz Current 10A
Terminal Capacity	Max. 2 x 2.5mm cables

**592F**

→ **DOUBLE SWITCHED SOCKET - 10A**



Overall Dimensions	118mm x 74mm
Mounting Centres	84mm
Ratings	Voltage 230/240V a.c. 50Hz Current 10A
Terminal Capacity	Max. 2 x 2.5mm cables

**598F**

→ **SINGLE SWITCHED SOCKET - 10A**



Overall Dimensions	48mm x 100mm
Mounting Centres	80mm
Ratings	Voltage 230/240V a.c. 50Hz Current 10A
Terminal Capacity	Max. 2 x 2.5mm cables

**594F**

→ **SINGLE SWITCHED SOCKET - 10A**



Overall Dimensions	74mm x 118mm
Mounting Centres	84mm
Ratings	Voltage 230/240V a.c. 50Hz Current 10A
Terminal Capacity	Max. 2 x 2.5mm cables

**599F**

→ **DOUBLE SWITCHED SOCKET - 10A**



Overall Dimensions	48mm x 170mm
Mounting Centres	150mm
Ratings	Voltage 230/240V a.c. 50Hz Current 10A
Terminal Capacity	Max. 2 x 2.5mm cables



## Keylock Switches

568



### KEY LOCK SWITCH - LOCKABLE 'ON' OR 'OFF'



Overall Dimensions	118mm x 74mm	
Mounting Centres	84mm	
Poles / Ways	1 Pole / 2 Way	
Ratings	Voltage	250V a.c. 50Hz
	Current	16A / 16AX / M50 (AS/NZS 3133)
Terminal Capacity	Maximum of 4 x 1.5mm <sup>2</sup> or 2 x 1.5mm <sup>2</sup> cables	
Notes	Available in white only. Lockable ON or OFF.	

568ON



### KEY LOCK SWITCH - LOCKABLE 'ON'

As per 568, except lockable in 'ON' position only.

568OFF



### KEY LOCK SWITCH - LOCKABLE 'OFF'

As per 568, except lockable in 'OFF' position only.

568CK



### KEY LOCK SWITCH - COMMON KEYED

As per 568, lockable in 'ON' and 'OFF' positions. 568CK versions are common keyed.

## Range Switches

545



### SINGLE POLE SWITCH



Overall Dimensions	118mm x 74mm	
Mounting Centres	84mm	
Ratings	250V a.c., 45A/ 20AX (AS/NZS 3133), 1 Way. Has "E" & "N" loop terminals.	
Notes	Suits Cat 89, 536 or 537 Mounting Block, Cat 144 Flush Box and Cat 145V or 148V Mounting Bracket.	

545



### RANGE SOCKET



Overall Dimensions	118mm x 74mm	
Mounting Centres	84mm	
Ratings	230V- 400V a.c., 32A max, single or two phase cookers. 4 pin.	
Notes	Suits Cat 144 Flush Box or Cat 89 or 537 Mounting Block. Compatible with Cat 976 Range Plug.	

## Shaver Socket

1575



### SHAVER SOCKET



Overall Dimensions	146mm x 90mm	
Mounting Centres	120mm	
Ratings	230V - 240V a.c. primary and 240V - 115V a.c. secondary, 20VA max.	
Notes	Vertical or horizontal mounting. Double insulated. Switches on when plug is inserted. This socket replaces PDL's 63T Shaver Socket.	

# Sockets – 500 series

## Unswitched Socket

593

### → SINGLE UNSWITCHED SOCKET



Overall Dimensions	118mm x 74mm
Mounting Centres	84mm
Ratings	230V - 240V a.c., 10A.
Notes	Suits Cat 89, 536 or 537 Mounting Block, Cat 144 Flush Box and Cat 145V or 148V Mounting Bracket.

## Threaded Socket

593LRP

### → SINGLE THREADED SOCKET with PLUG



Overall Dimensions	118mm x 74mm
Mounting Centres	84mm
Ratings	230V - 240V a.c., 10A. Comes complete with Cat 905LR.
Notes	Suits Cat 537 or 89 Mounting Block, Cat 144 Flush Box and 145V or 148V Mounting Bracket.

## Square Plate Sockets

570S

### → SQUARE PANEL MOUNT SOCKET



Overall Dimensions	51mm x 51mm x 9mm
Mounting Centres	38mm
Ratings	230V - 240V a.c., 10A.
Notes	Supplied with panel clamp for fitting through rectangular entry 38mm wide x 31mm high

## RCD Protection Device

596RCD

### → POWERGUARD PLATE MOUNTED RCD



Overall Dimensions	118mm x 74mm
Mounting Centres	84mm
Ratings	230V - 240V a.c., 20A. Tested to AS3190:1990 and AS3100:1990. Plate mounted RCD which protects all socket outlets or permanently-wired appliances wired downstream. Switches off the current within 30 ms if electrical leakage to earth exceeds as little as 30mA.
Notes	Suits Cat 89DP Mounting Block, Cat 144 Flush Box and Cat 145V or 148V Mounting Bracket.

## Round Plate Sockets

570R

### → ROUND PANEL MOUNT SOCKET



Overall Dimensions	56mm diameter
Mounting Centres	40mm
Ratings	230V - 240V a.c., 10A.
Notes	Suits Cat 530 Round Mounting Block.



## Conversion Plate

538

### → CONVERSION PLATE



Overall Dimensions	118mm x 74mm
Mounting Centres	84mm x 46mm
Plate Mounting Centres	84mm. Plate adapts existing 2-gang installation to 600 Designer Series standard plate size.

## Module Mounting Clips

539

### → MOUNTING CLIP



Notes	40mm mounting centres for screw fixing. Suits all 500 Series and 600 Designer Series modules. Available in white only.
-------	--

## Floor Socket

535F

### → FLUSH FLOOR SOCKET



Ratings	230V - 240V a.c., 50Hz, 10A.
Projection above the floor	10mm at highest point.
Projection above the floor	52mm
Overall diameter	130mm
Cut-out for the base	97-100mm diameter
Knockouts	1 x 25mm
Conduit entries	2 x 25mm
Notes	Available in grey only.

533

### → PANEL MOUNTING CLIP



Notes	A 30mm square hole is required. Clip will accommodate metal thickness from 20SWG to 16SWG (1.0mm - 1.5mm). Suits all 500 Series and 600 Designer Series modules. Available in white and black only.
-------	--

## Power Tower

535

### → POWER TOWER



Overall Dimensions	158mm x 158mm x 140mm high
Notes	Takes 4 x standard, vertical 600 Designer Series plates. Fitted with divider for segregated services. 1 central 25mm conduit entry and 4 x 25mm knockouts. Cover has aperture for 500 Series and 600 Designer Series modules.



# Mounting Accessories – 600/500 series

## Flush Boxes

144PT

### → FLUSH BOX

**Notes**

Plastic threaded plate fixing holes.  
84mm x 52mm opening.  
84mm product mounting centres, 48mm deep.  
Large cable entries for ease of wiring.  
Side mounting by nails. Provision for horizontal or vertical mounting to studs. Provision for angled screw fixing through side wall.

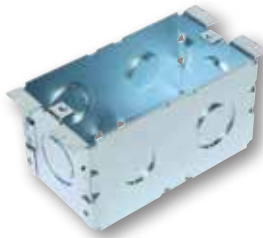


144MT

As for 144PT but with threaded brass plate fixing holes.

140C

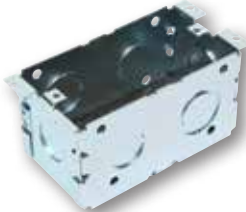
### → CONCRETE INSTALLATION FLUSH BOX



External Dimensions	110 x 53 x 53mm (L x W x D)
Internal Dimensions	93 x 50 x 50mm (L x W x D)
Mounting Centres	84mm
Notes	Refer to installation sheet for product compatibility

140F

### → FIRE AND ACOUSTIC RATED FLUSH BOX



External Dimensions	110 x 53 x 53mm (L x W x D)
Internal Dimensions	93 x 50 x 50mm (L x W x D)
Mounting Centres	84mm
Notes	2 Hour fire rated, STC 60 acoustic rated. Refer to installation sheet for product compatibility

## Mounting Brackets

145V

### → VERTICAL BRACKET

**Notes**

84mm product mounting centres.  
Nails can be inserted at the side.  
Suits all standard plate size 600 Designer Series accessories.



146H

### → HORIZONTAL BRACKET

**Notes**

Nailed stud bracket for standard plate size 600 Designer Series accessories.  
84mm product mounting centres.

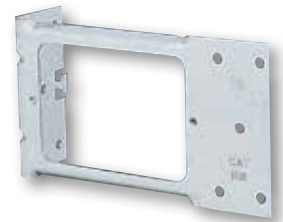


148H

### → HORIZONTAL BRACKET

**Notes**

84mm product mounting centres.  
Opening 52mm x 76mm.  
Suits all standard plate size 600 Designer Series accessories.





## Mounting Brackets

148V

### → VERTICAL BRACKET



<b>Notes</b>	84mm product mounting centres. Opening 52mm x 76mm. Suits all standard plate size 600 Designer Series accessories.
--------------	---

## Mounting Blocks and Spacers

536

### → SHALLOW MOUNTING BLOCK (STANDARD SIZE)



<b>Overall Dimensions</b>	76mm x 119mm x 25mm
<b>Mounting Centres</b>	84mm
<b>Knockouts</b>	4 x 25mm knockouts, 12 x 20mm knockouts, 12 x 16mm knockouts, 12 TPS cable knockouts.
<b>Notes</b>	Suits all standard size 600 Designer Series accessories.

## Mounting Blocks and Spacers

89

### → UNIVERSAL MOUNTING BLOCK



<b>Overall Dimensions</b>	122mm x 80mm x 30mm
<b>Mounting Centres</b>	84mm
<b>Notes</b>	Suits all standard size 600 Designer Series accessories. Available New Zealand only.

**89SP** As for 89 but 18mm deep.

**89DP** As for 89 but 37mm deep.

89DI

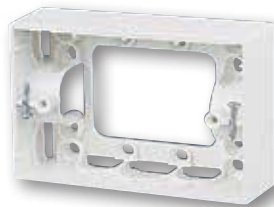
### → DOUBLE INSULATED MOUNTING BLOCK



<b>Overall Dimensions</b>	122mm x 80mm x 37mm
<b>Mounting Centres</b>	84mm 4 moulded conduit entry points (20mm & 25mm options).
<b>Notes</b>	Suits all standard size 600 Designer Series accessories. Available in white only.

537

### → DEEP MOUNTING BLOCK



<b>Overall Dimensions</b>	77mm x 120mm x 45mm
<b>Mounting Centres</b>	84mm
<b>Knockouts</b>	As for Cat 536.
<b>Notes</b>	Suits all standard size 600 Designer Series accessories.

531

### → SPACER (STANDARD SIZE)



<b>Overall Dimensions</b>	118mm x 75mm x 13mm
<b>Mounting Centres</b>	84mm

# Mounting Accessories – 600/500 series

## Mounting Blocks and Spacers

557

### → MOUNTING BLOCK SPACER



Overall Dimensions	118mm x 75mm x 12mm
Notes	For use with Cat 89 Mounting Block for surface mounting extra deep accessories eg Cat 675 Shaver Socket.

567S

### → SHORT WORKTOP MOUNTING BLOCK



Overall Dimensions	103mm x 51mm x 30mm
Mounting Centres	80mm
Knockouts	4 x 16mm knockouts, 4 x TPS cable knockouts.
Notes	Suits Cat 688VH, 689VH, 698, 698N, 698/15 and 698R.

560

### → SINGLE ARCHITRAVE MOUNTING BLOCK



Overall Dimensions	33mm x 79mm x 25mm
Mounting Centres	62mm
Knockouts	4 x 16mm knockouts, 4 x TPS cable knockouts.
Notes	Suits Cat 661VH and 662VH Architrave Plates

567L

### → LONG WORKTOP MOUNTING BLOCK



Overall Dimensions	51mm x 173mm x 30mm
Mounting Centres	150mm
Knockouts	8 x 16mm knockouts, 8 x TPS cable knockouts.
Notes	Suits Cat 699, 699N, 699TB, 699TB/15 and 699TBR.

565

### → DOUBLE ARCHITRAVE MOUNTING BLOCK



Overall Dimensions	33mm x 132mm x 25mm 2 mounting holes.
Mounting Centres	114mm
Knockouts	8 x 16mm knockouts, 8 x TPS cable knockouts.
Notes	Suits Cat 663VH and 664VH Architrave Plates.



## Mounting Brackets

558



### HORIZONTAL BRACKET for WORKTOP PLATES



Mounting Centres	80mm
Notes	Suits Cat 688VH, 689VH, 698, 698N, 698R and 698/15.

559



### HORIZONTAL BRACKET for WORKTOP PLATES

Mounting Centres	150mm
Notes	Suits Cat 699, 699N, 699TB, 699TBR and 699TB/15.

640RC



### FOUR GANG MOUNTING BLOCK



Overall Dimensions	84mm x 196mm x 19mm
Mounting Centres	84mm
Knockouts	7 x 20mm Knock-outs. Round conduit adaptor 25mm.
Notes	Suits Cat 644, 644N, 644P, 644/15, 641, 641N, 641P and 641/15. Available in white only.
<b>640SC</b>	Includes square conduit adaptor 25.5mm x 16.5mm.

## Stainless Steel Switch Plates

534P8S



### STAINLESS STEEL SWITCH PLATE



Features	8-Way
Overall Dimensions	220mm x 128mm
Notes	Supplied with 8 x Cat 533 White Module Mounting Clips.

534P16S



### STAINLESS STEEL SWITCH PLATE



Features	16-Way
Overall Dimensions	220mm x 220mm.
Notes	Supplied with 16 x Cat 533 White Module Mounting Clips.

534P24S



### STAINLESS STEEL SWITCH PLATE



Features	24-Way
Overall Dimensions	313mm x 220mm.
Notes	Supplied with 24 x Cat 533 White Module Mounting Clips.

# Mounting Accessories – 600/500 series

## Switch Panel Wall Boxes

**534B8**



**SWITCH PANEL  
WALL BOX**



Features	8-Way
Overall Dimensions	200mm x 108mm x 60mm 1 earth terminal.
Knockouts	Side knockouts: 2 x 38mm, 4 x 25/21mm. Back knockouts: 11 x 38mm, 2 x 25/21mm.

**534B16**



**SWITCH PANEL  
WALL BOX**



Features	16-Way
Overall Dimensions	200mm x 200mm x 60mm 1 earth terminal.
Knockouts	Side knockouts: 2 x 38mm, 4 x 25/21mm. Back knockouts: 2 x 38mm, 4 x 25/21mm.

**534B24**



**SWITCH PANEL  
WALL BOX**



Features	24-Way
Overall Dimensions	200mm x 293mm x 60mm 1 earth terminal.
Knockouts	Side knockouts: 2 x 38mm, 4 x 25/21mm. Back knockouts: 3 x 38mm, 4 x 25/21mm.

## Terminals

**501T**



**SINGLE SCREW  
TERMINAL 40A**



Notes	Terminal accepts 3 x 6mm <sup>2</sup> or 4 x 2.5mm <sup>2</sup> conductors. 415V a.c. 50Hz. Available in orange colour only.
-------	---

**502T**



**TWIN SCREW  
TERMINAL 40A**



Notes	Terminal accepts 3 x 6mm <sup>2</sup> or 4 x 2.5mm <sup>2</sup> conductors. 415V a.c. 50Hz. Available in orange colour only.
-------	---

**501JAR-50**



**SINGLE SCREW  
TERMINALS 40A,  
BULK (50 TERMINALS)**



Notes	Jar of 50 x 501T single screw terminals (40A). Terminals accept 3 x 6mm <sup>2</sup> or 4 x 2.5mm <sup>2</sup> conductors.
-------	--



## Junction Boxes

**544**

### → JUNCTION BOX



<b>Overall Dimensions</b>	67mm x 67mm x 37mm
<b>Rating</b>	Rated at 32A, 500V.
<b>Notes</b>	4 mounting holes 51mm x 51mm. Includes 4 x 501T terminals, fully shrouded. Each terminal accommodates 4 x 2.5mm <sup>2</sup> cables.

## Junction Boxes

**629F**

### → CEILING MOUNTING BASE



<b>Diameter</b>	90mm
<b>Notes</b>	For use with Cat 629 Batten Holder or Cat 44A Ceiling Rose. Available in white only.

**544J**

### → JUNCTION BOX



<b>Overall Dimensions</b>	92mm x 65mm x 45mm
<b>Rating</b>	Rated at 40A, 500V.
<b>Notes</b>	Includes 1 twin and 3 single screw terminals, fully shrouded. Each terminal accommodates 3 x 6mm <sup>2</sup> cables. Comes with two ready-fix nails in the base.

**44**

### → CEILING ROSE

<b>Overall Dimensions</b>	62mm diameter
<b>Mounting Centres</b>	51mm
<b>Ratings</b>	Voltage 250V a.c. 50Hz Current 5A
<b>Terminal Capacity</b>	Maximum of 3 x 1.5mm <sup>2</sup> or 2 x 1.5mm <sup>2</sup> cables
<b>Notes</b>	Maximum flex size 3-core 2.5mm <sup>2</sup>

**629**

### → BATTEN HOLDER with CLIP-ON COVER PLATE



<b>Base</b>	71mm
<b>Mounting Centres</b>	51mm 4 terminals, each capable of accepting 4 x 2.5mm <sup>2</sup> cable. Terminals are shrouded and fingerproofed. Backed-off terminal screws all face one direction.
<b>Rating</b>	250V a.c., 50Hz, 150W max.
<b>Notes</b>	Available in white only. Metal cover plate N/A.

**44A**

### → CEILING ROSE - LARGE TERMINAL

<b>Overall Dimensions</b>	71mm diameter
<b>Mounting Centres</b>	51mm
<b>Ratings</b>	Voltage 500V a.c. 50Hz Current 16A
<b>Terminal Capacity</b>	Maximum of 4 x 1.5mm <sup>2</sup> or 2 x 1.5mm <sup>2</sup> cables
<b>Notes</b>	Maximum flex size 3-core 2.5mm <sup>2</sup>

© 2010 Schneider Electric. As standards, specifications and design change from time to time, always ask for confirmation of the information given in this publication.

**Schneider Electric (NZ) Ltd.**

38 Business Parade South, Highbrook,  
East Tamaki, Manukau 2013  
PO Box 15355, New Lynn, Waitakere 0640  
Tel: +64 9 829 0490  
Fax: +64 9 829 0491

Customer Care: 0800 652 999  
After hours service hotline: 0800 735 435  
Email: [sales@nz.schneider-electric.com](mailto:sales@nz.schneider-electric.com)  
[www.schneider-electric.co.nz](http://www.schneider-electric.co.nz)

