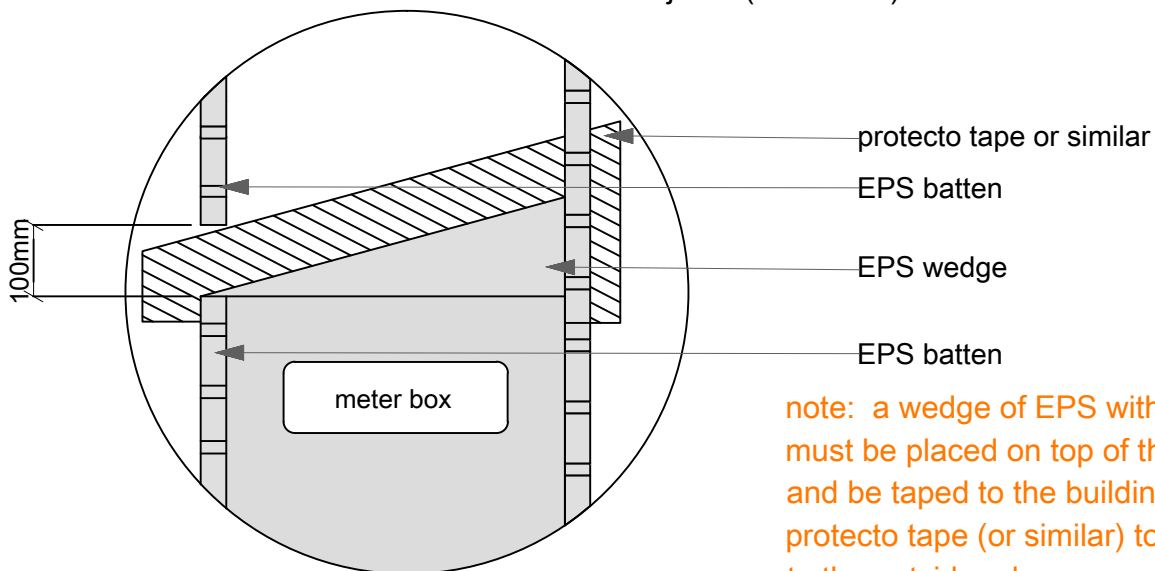
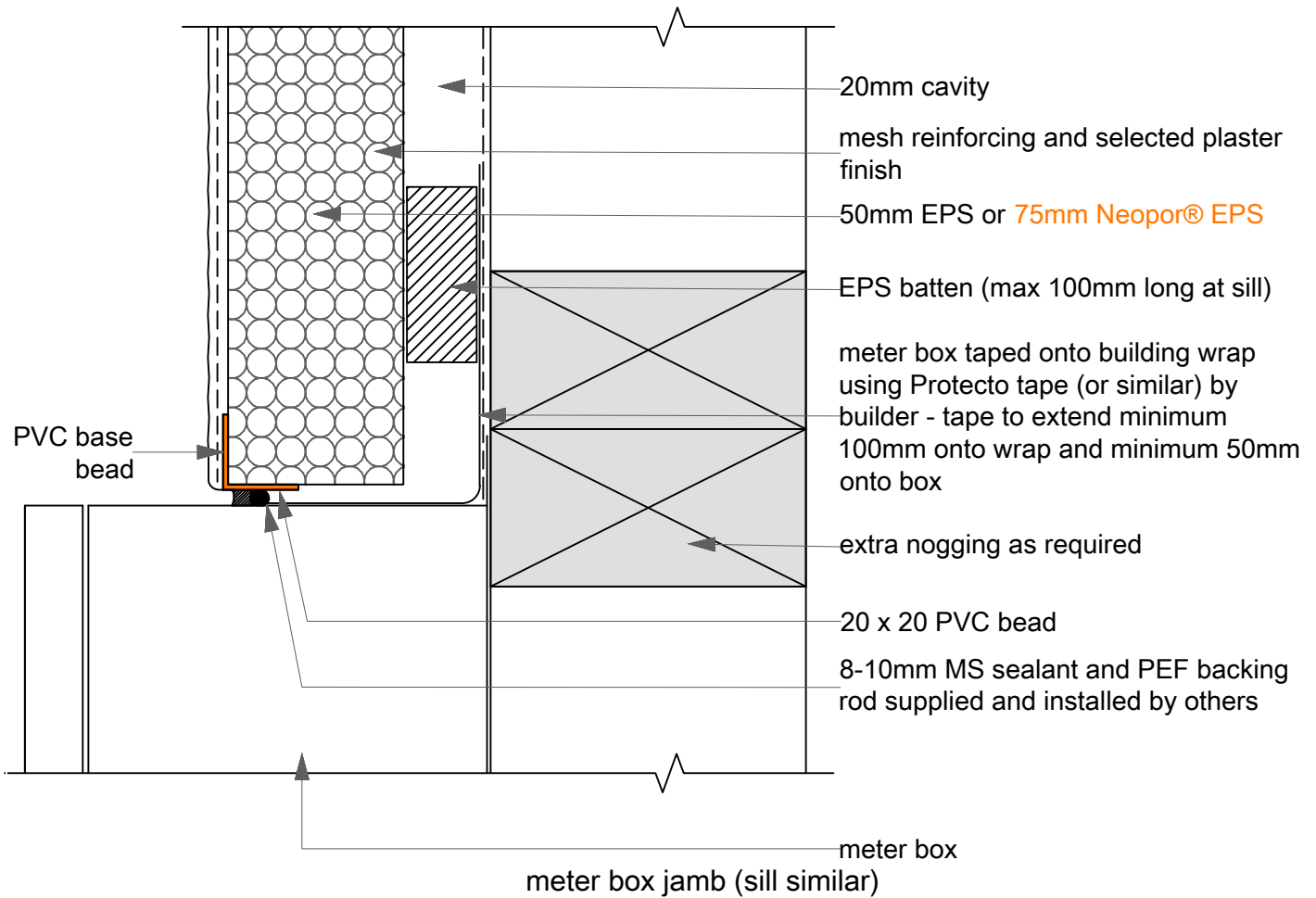


BRANZ Appraised
Appraisal No.510 [2013]



note: a wedge of EPS with a 15° slope must be placed on top of the meter box and be taped to the building wrap using protecto tape (or similar) to shed water to the outside edge. ensure tip of the wedge is not blocked by a vertical batten

meter box head

25A
SCALE: 1:2

Wall: Meterbox Flashings

CAVITECLAD