

**NOTE:**  
CONTACT ULTI GROUP FOR ANY CUSTOMISATIONS AND TO DISCUSS PROJECT SPECIFIC INFORMATION

www.ultigroup.co.nz  
hello@ultigroup.co.nz  
Phone: 0800 807 753  
105 Glover Road, Hawera, 4610

**SPECIFICATIONS :**

RELEASED VERSION NO. : **VERSION 1**

PRODUCT GROUP : **HIGH SPEED DOORS**

PRODUCT ID : **00000**

APPLICATION : **INTERNAL & EXTERNAL**

STANDARD SIZE : **4000 mm WIDE x 3500 mm HIGH**

MINIMUM SIZE : **2000 mm WIDE x 2000 mm HIGH**

MAXIMUM SIZE : **6000 mm WIDE x 7000 mm HIGH**

HEADROOM : **1000 mm**

SIDE ROOM - MOTOR SIDE : **450 mm**

SIDE ROOM - NON MOTOR SIDE : **180 mm**

STANDARD FRAME MATERIAL : **GALVANISED STEEL**

STANDARD FRAME COLOUR : **RAL 9010 - WHITE**

STANDARD CURTAIN MATERIAL : **3.5mm INSULATED REINFORCED PVC FABRIC CURTAIN**

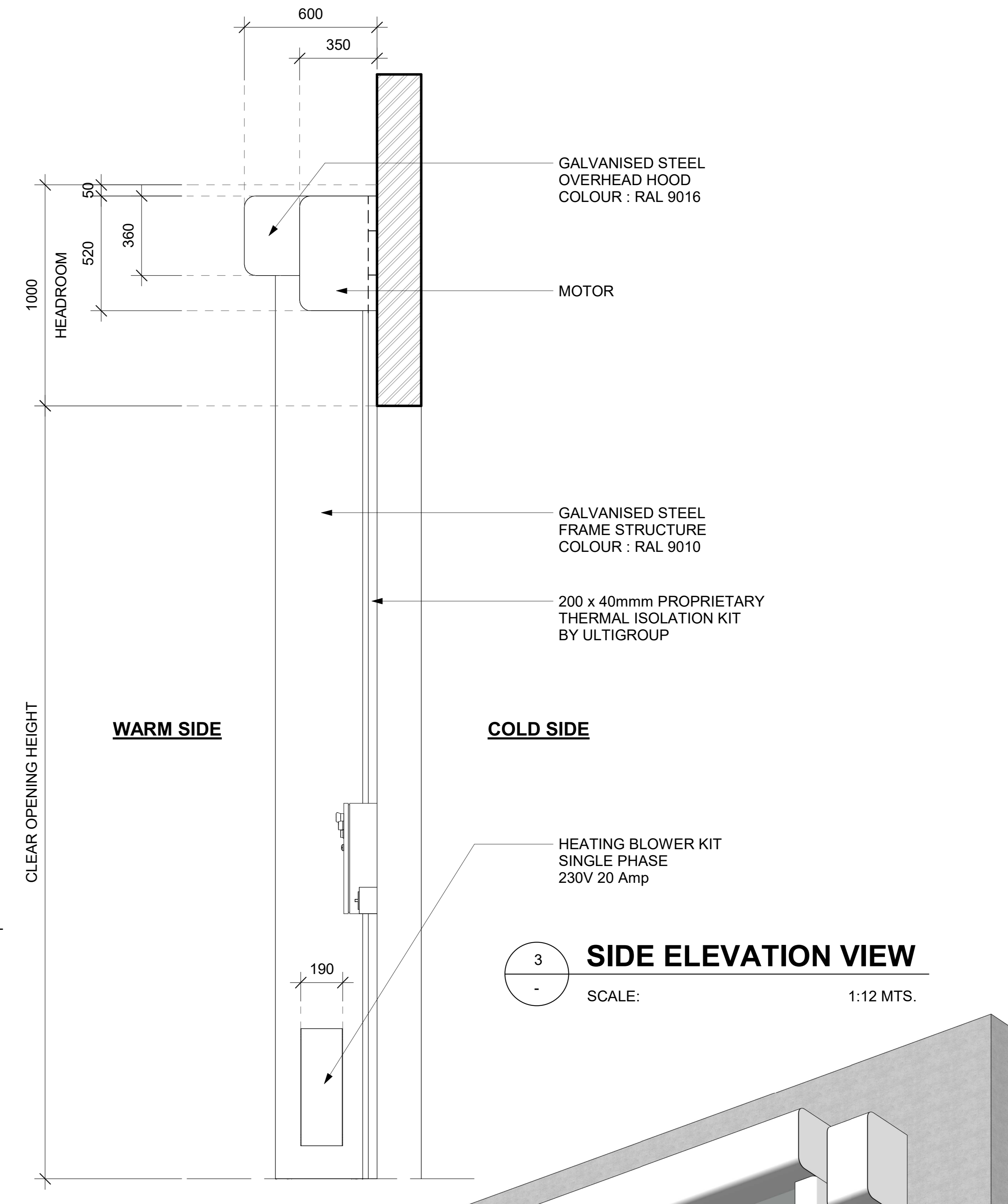
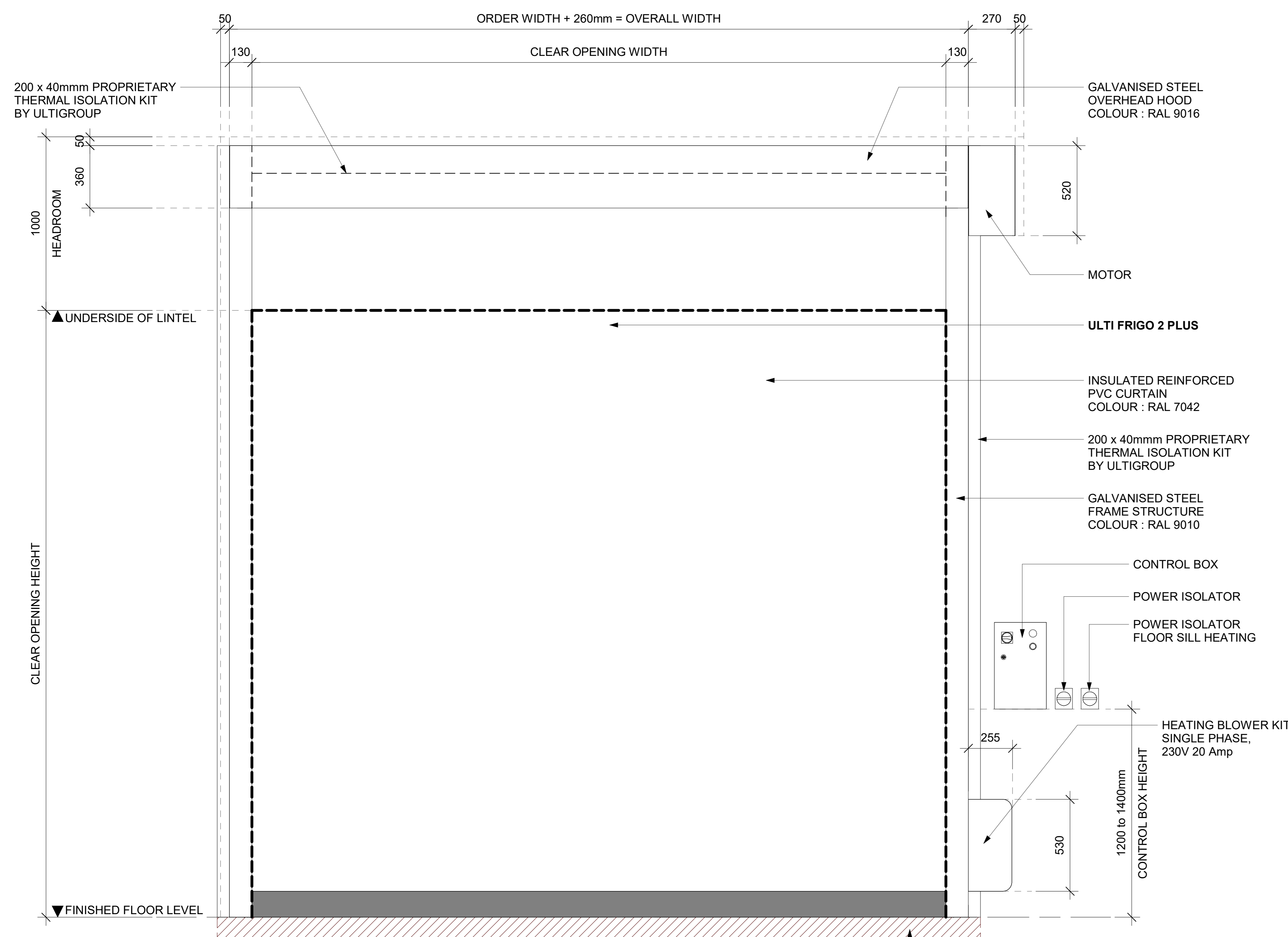
CURTAIN COLOUR (INSIDE / OUTSIDE) : **RAL 7042 - TRAFFIC GREY**

VISION PANELS : **NONE**

POWER SUPPLY : **3 PHASE, 400V + NEUTRAL + EARTH 15 Amp**

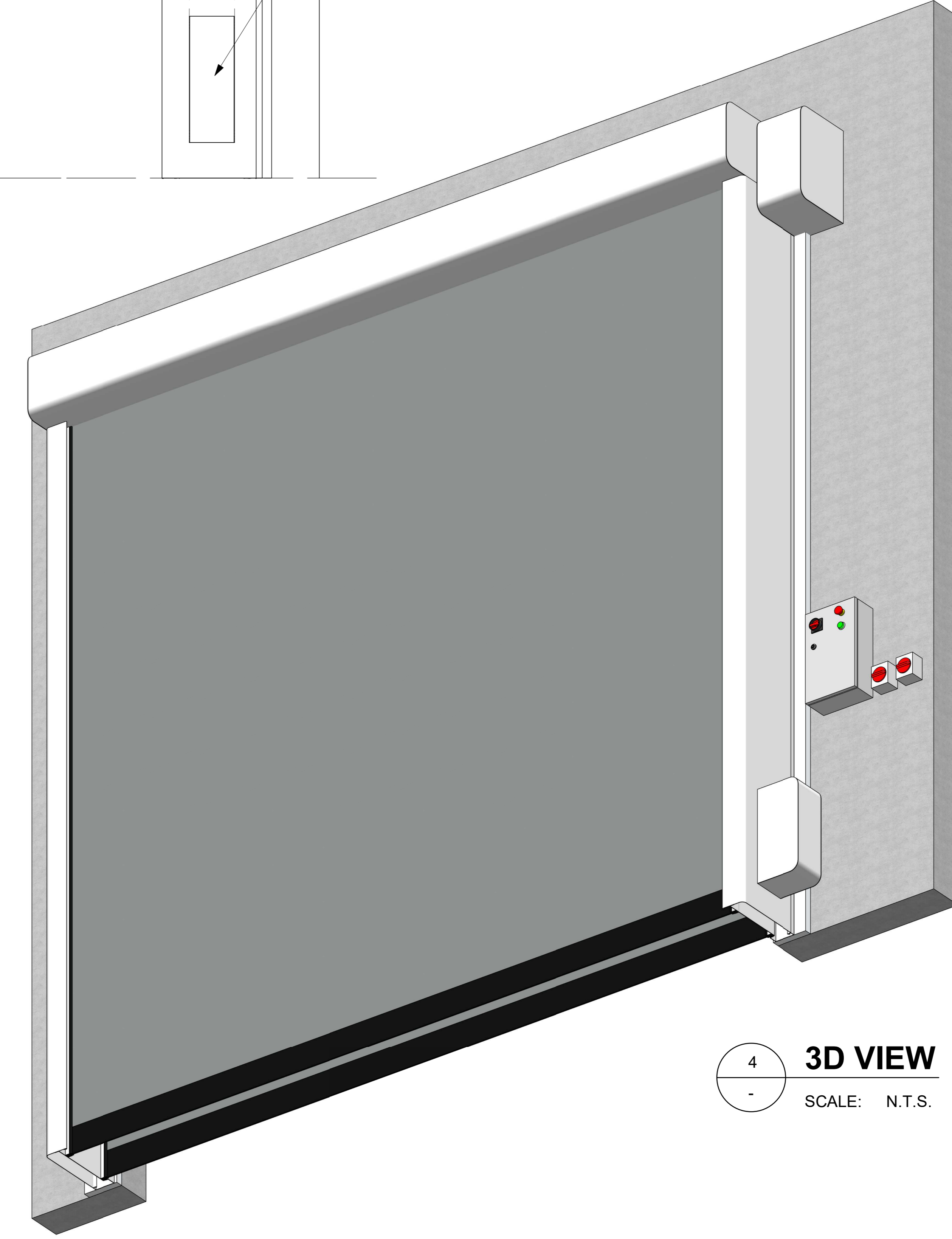
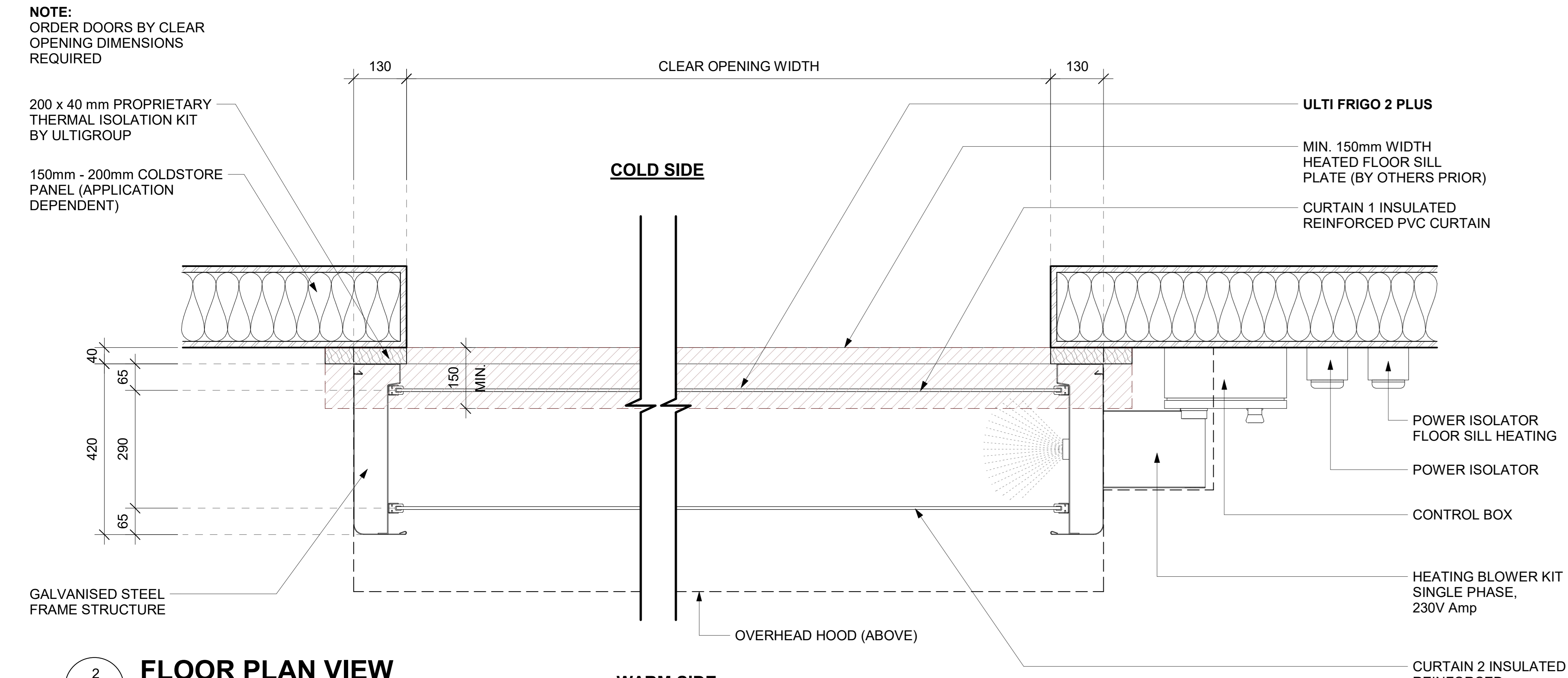
HEATING POWER SUPPLY : **SINGLE PHASE, 230V 20 Amp**

WORKING TEMPERATURE : **SUB-ZERO TEMPERATURES FROM -1°C DOWN TO -25°C**



**1 FRONT ELEVATION VIEW**  
SCALE: 1:12 MTS.

**3 SIDE ELEVATION VIEW**  
SCALE: 1:12 MTS.



**2 FLOOR PLAN VIEW**  
SCALE: 1:12 MTS.

**4 3D VIEW**  
SCALE: N.T.S.

**TITLE:**  
**ULTI FRIGO 2 PLUS HIGH SPEED DOOR**

**SHEET NO. :** 1 OF 1  
**DATE :** SEPT. 14, 2020

**DRAWING NUMBER :**  
**FRIGO2-PLUS-001**

**APPROVED BY :** J.PRESTIDGE  
**DRAWN BY :** J.ENRIQUEZ

**SCALE :** As indicated  
**SHT. SIZE :** A0

\*All dimensions are in millimeters unless otherwise specified