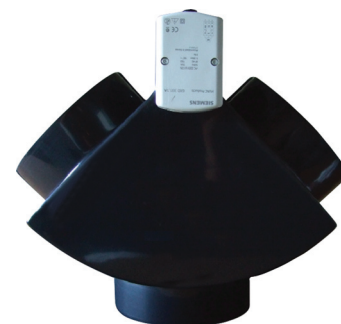


MOTORISED DIRECTIONAL T-BRANCH DAMPER

Duct Size (mm)	Order Code
150	DCT1495
200	DCT1500

- Standard 240V Drive Open, Drive Close (D.O.D.C) motor attached.
- Manufactured from ABS plastic.
- Single damper motor & paddle control to direct airflow into or from selected branch.
- Designed for both dual supply air and extract air applications.
- Aesthetic smooth lines.



150mm Motorised Directional
T-Branch Damper

MOTORISED BARREL DAMPER

Duct Size (mm)	Order Code
150	DCT1168
200	DCT1123
250	DCT1124
300	DCT1125
350	DCT1126
400	DCT1127

- Standard 240V Drive Open, Drive Close (D.O.D.C) motor attached.
- Other voltages available upon request.
- Manufactured from HDPE.
- Braced for strength with 2 x 6mm steel rod rings.
- 100% positive shut off and positive lock duct tabs.
- Insulation meets AS 1530 part 3.



Note: These are insulated

MANUAL BARREL DAMPER

Duct Size (mm)	Order Code
150	DCT0787
200	DCT0706
250	DCT0788
300	DCT2706
350	
400	

- Manufactured from HDPE.
- Complete with hand quadrant.
- Braced for strength with 2 x 6mm steel rod rings.
- Positive lock duct tabs.
- Insulation meets AS 1530 part 3.



Note: These are insulated

Note

1. Products with the "order code" showing are generally ex. stock lines - other products are available to order.
2. Nude combination fittings will be supplied in component form. We do NOT assemble.
3. Insulated versions may not be ex-stock but will generally be available within 2-3 days of ordering.
4. Should you have an ongoing requirement for an item that is not a standard stock line – PLEASE discuss with us and we will review stocking the item for you.